

Document Number	Revision	Revision Date	Product Date Code Beginning With
L4714	Rev. B	05/2023	B

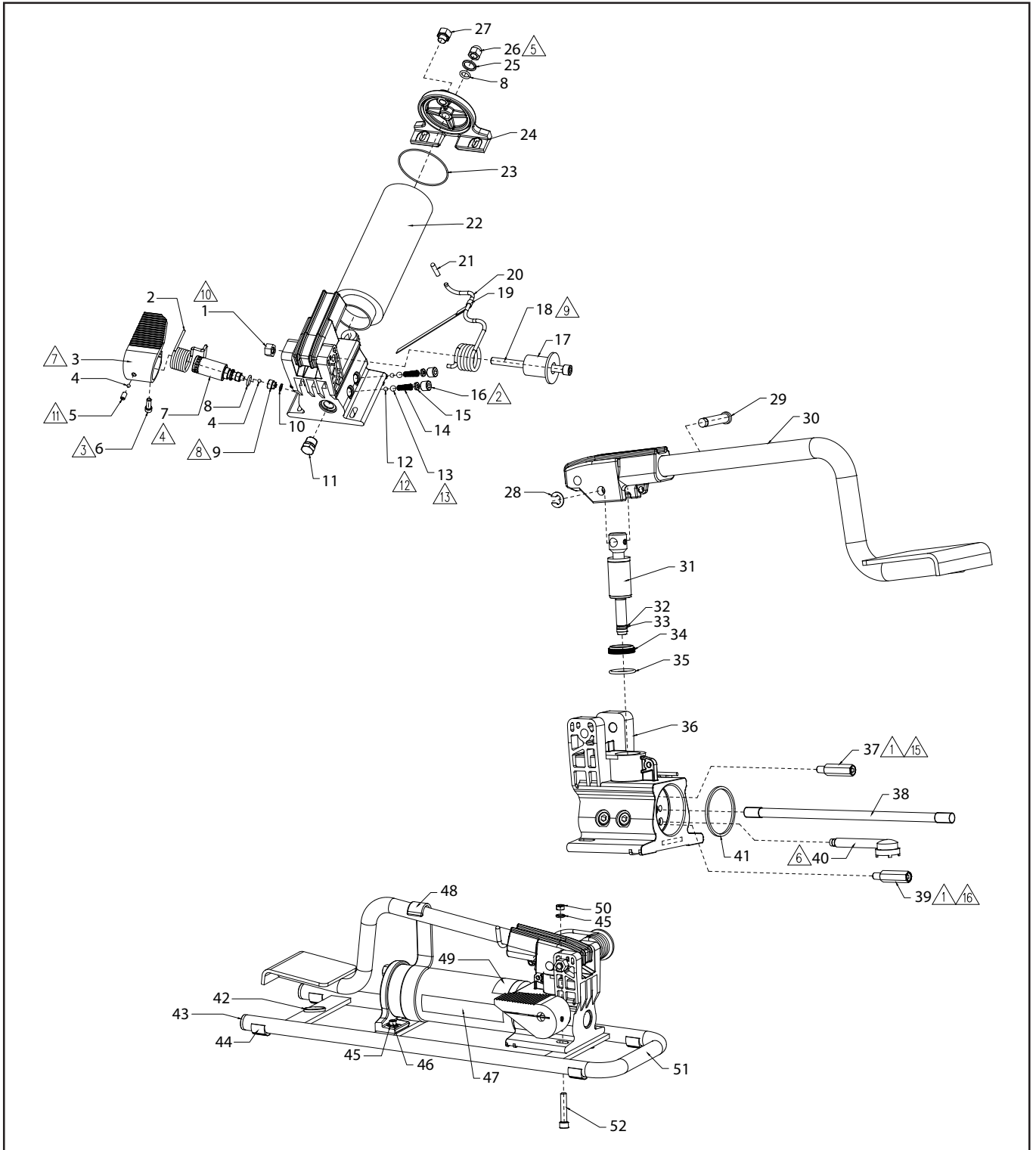


Figure 1, P-392FP

Repair Parts List for Model P-392FP, Date Code "B" (Refer to Figure on Page 1)

Item	Description	Qty	Part Number
1	Hex nut	1	C428120
2	Torsion spring	1	▲
3	Foot pedal	1	DA10955218
4	Ball-0.188, STL	2	B1005016
5	Screw-set	1	BC2506027K
6	Screw-SHCS	1	B1008028
7	Valve spindle	1	U170152010
8	O-ring-round	2	▲
9	Ball seat	1	DD6467290
10	Gasket	1	DA9355167
11	Plug	1	R515245-2
12	Ball-0.219, STL	2	▲
13	Ball-0.313, STL	2	▲
14	Conical spring	2	▲
15	Spring cap	2	▲
16	Pipe plug	2	CN815006
17	Spring spacer	1	DC6642186
18	.375-16 X 5.5 modified to 4.5 SHCS	1	▲
19	Cord strap	1	DA7570217
20	Spring	1	▲
21	Cap	1	▲
22	Reservoir - bake yellow	1	DA10945025
23	O-ring-round	1	▲
24	End cap (machined)	1	DC362020
25	Washer	1	▲
26	Acorn nut	1	CL341055
27	Plug-STRT THD	1	B1018006
28	Retaining ring	1	▲ ■
29	Beam pin	1	■
30	Foot pedal beam	1	U042192902
31	Plunger assembly STD.	1	DC607900SR
32	Back-up-split	1	■
33	O-ring-round	1	■
34	Wiper	1	▲
35	O-ring-round	1	▲
36	Plasalum base FT W/MT holes	1	U042192005-1
37	Bypass valve asm	1	DA5493900SR
38	Tie rod-ref1591c	1	DC1017149

Notes:

- ▲ Indicated item included in and available as a part of Service Kit P392FPK1
- Indicated item included in and available as a part of DC607900SR

Repair Parts List for Model P-392FP, Date Code "B" (Refer to Figure on Page 1)

Item	Description	Qty	Part Number
39	Relief valve assy	1	DA8802900SR
40	Filter asm.-REF1768 (serv DA3729900SR)	1	DA3729900
41	Square ring	1	▲
42	Rubber bumper	1	DC6649108
43	Plastic plug	2	DC6645886
44	Foot	4	DC6644885
45	Cadium lock washer	4	F489066
46	Screw-SHCS	2	B1007028
47	Enerpac decal	2	▲
48	Handle fix	1	P392FP104
49	Blank m/no. decal	1	DA5255026
50	Nut-hex	2	B1001122
51	Foot pump frame	1	DC6643101
52	Screw-SHCS	2	B1011028

Notes:

- ▲ Indicated item included in and available as a part of Service Kit P392FPK1
- Indicated item included in and available as a part of DC607900SR



Notes	
1	Torque to 10-12 ft-lbs.
2	Torque to 26-38 ft-lbs.
3	Torque to 120-144 in-lbs.
4	Torque to 100-110 in-lbs.
5	Torque to 12-15 ft-lbs.
6	Press into bore hole as shown.
7	Top surface to be horizontally parallel to pump reservoir or slightly inclined.
8	Permanently mark in this area PER EES 115-4.
9	Apply Loctite 242 to threads after screw has been put through foot pump ears.
10	Tighten nut until tight and then back off until foot pedal returns to upright position easily.
11	Apply Loctite 242 to threads, torque to 85-100 in-lbs.
12	Coin 7/32" ball at 800-850 psi on 5 ton press.
13	Coin 5/16" ball at 1350-1450 psi on 5 ton press.
14	Lubricate and torque to 18-20 ft-lbs.
15	Set bypass valve (item 37) to 14-19 bar [200-275 psi] max.
16	Set relief valve (item 39) to 700 bar [10,000 psi] max.

ENERPAC 

www.enerpac.com