

| Document Number | Document Revision | Document Revision Date | Product Date Code Beginning With |
|-----------------|-------------------|------------------------|----------------------------------|
| L4181 | E | 09/2023 | A |

NOTICE:

To ensure optimum performance of the repaired product, Enerpac recommends the installation of ALL parts included in a service assembly or repair kit.

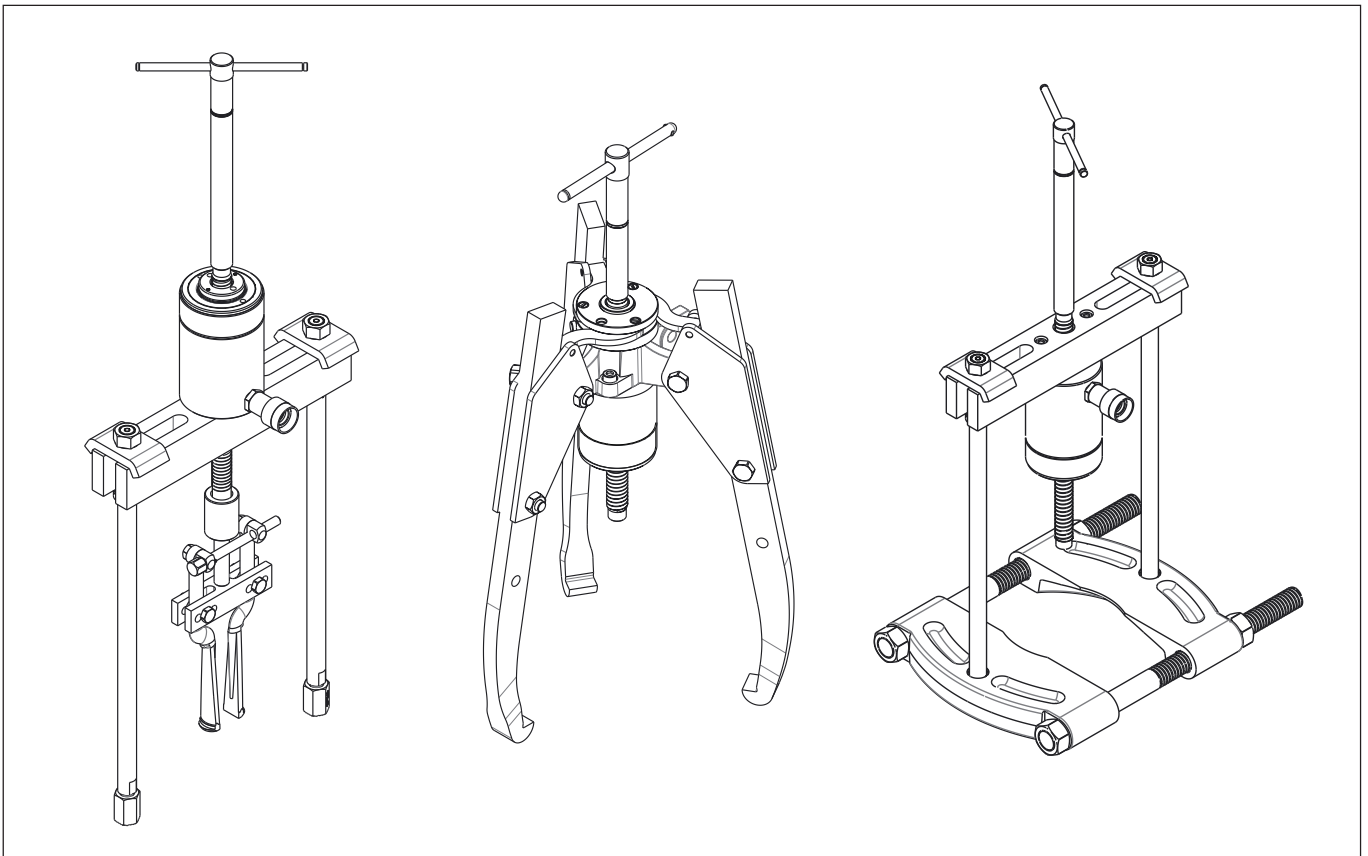
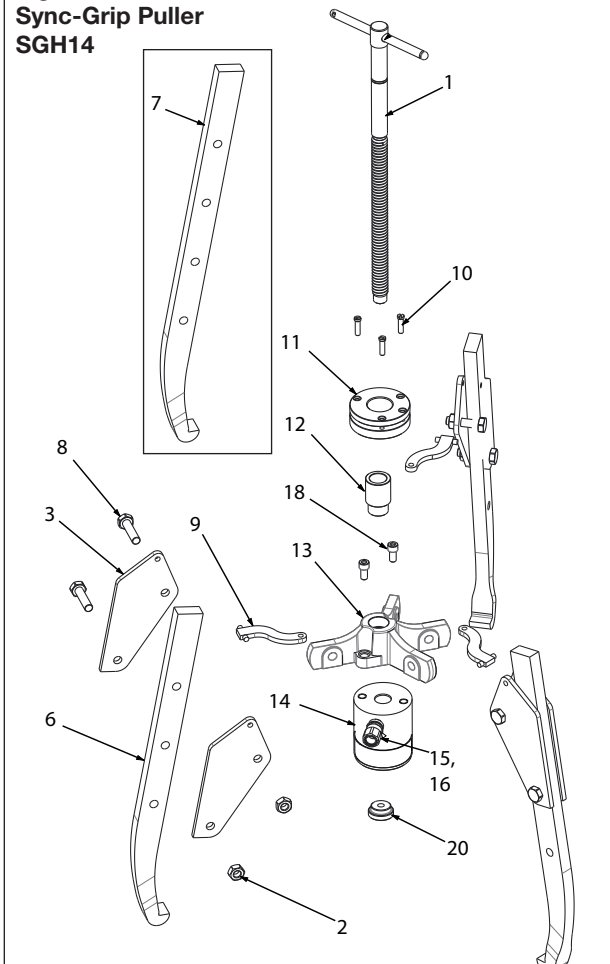


Table of Contents:

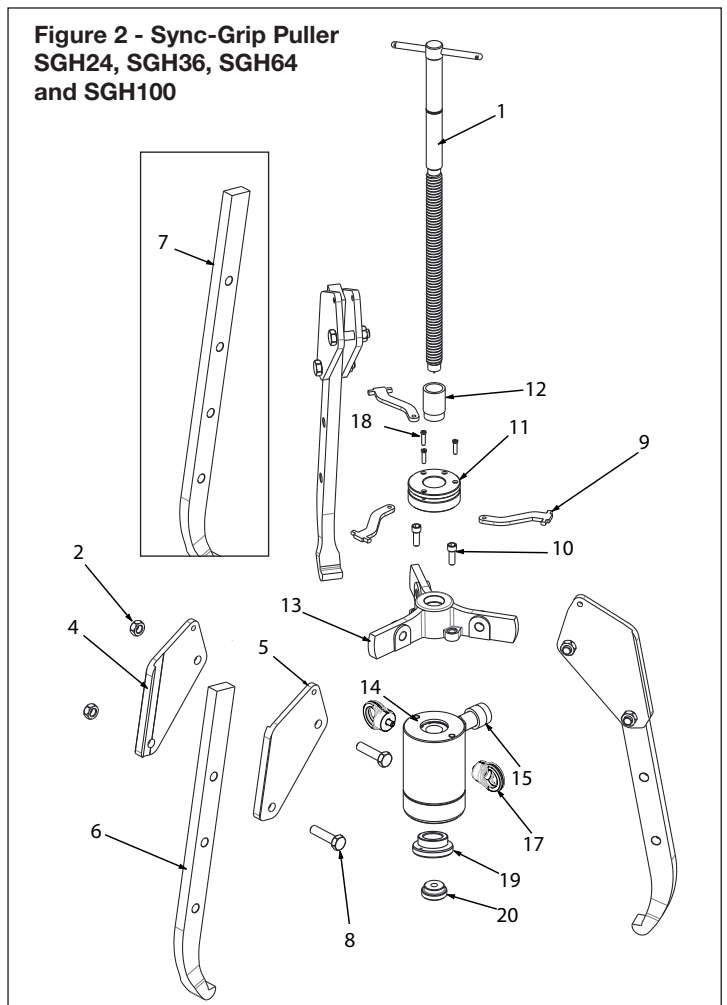
| | Page |
|--|-------------|
| Figure 1 - Sync-Grip Puller - SGH14..... | 2 |
| Figure 2 - Sync-Grip Puller - SGH24, SGH36, SGH64 and SGH100 | 2 |
| Figure 3 - MPS Maintenance Set (Bearing Race Puller) | 4 |
| Figure 4 - MPS Maintenance Set (Cross Bearing Puller & Bearing Separator Attachment) | 4 |
| Figure 5 - Legs | 5 |

⚠ WARNING Be certain that hydraulic pressure is completely relieved (0 psi/bar) and that load has been removed from tool before beginning any adjustment, maintenance or repair procedures. Appropriate shop safety procedures are to be followed during disassembly and reassembly to minimize any possibility of injury.

**Figure 1 -
Sync-Grip Puller
SGH14**



**Figure 2 - Sync-Grip Puller
SGH24, SGH36, SGH64
and SGH100**



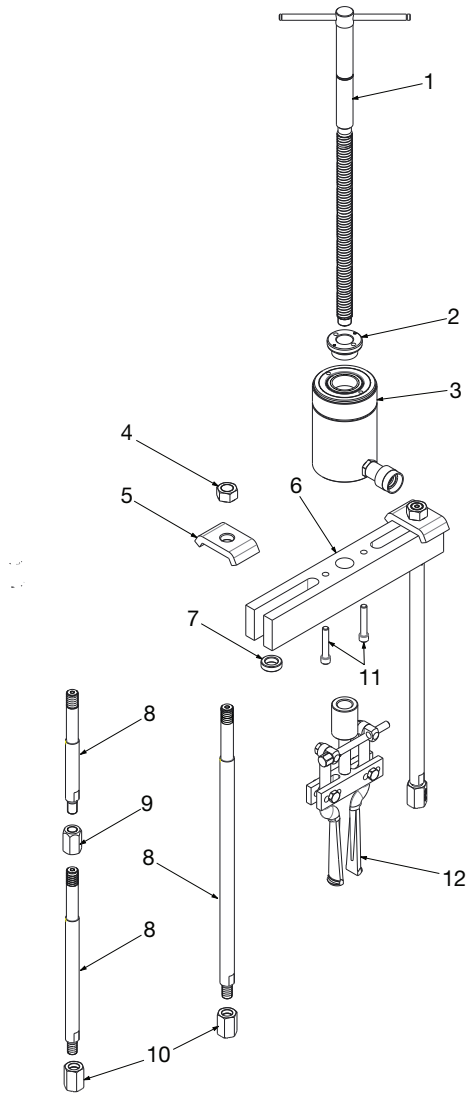
Repair Parts List for Figures 1 and 2

| Item | Puller Model/Part Number | | | | | Qty. | Description |
|------|--------------------------|---------|---------|---------|-----------|------|--|
| | SGH14 | SGH24 | SGH36 | SGH64 | SGH100 | | |
| 1 | SGH1001 | SGH2001 | SGH3001 | SGH6001 | SGH10001 | 1 | Adjusting Rod (spindle) |
| 2 | ■ | ◆ | ⌘ | ▷ | ▲ | 6 | Nut |
| 3 | ⌘ | N/A | N/A | N/A | ▼ | 6 | Plate (interchangeable left or right-hand) |
| 4 | N/A | + | ≈ | ↔ | N/A | 3 | Plate (left-hand) |
| 5 | N/A | + | ≈ | ↔ | N/A | 3 | Plate (right-hand) |
| 6 | SG1008 | SG2008 | SG3008 | SG6008 | SG10008 | 1 | Standard Jaw (1 jaw) |
| | SG1003K | SG2003K | SG3003K | SG6003K | SG10003K | 3 | Standard Jaw (accessory kit - 3 jaws) |
| 7 | SG1009 | SG2009 | SG3009 | SG6009 | N/A | 1 | Long Jaw (1 jaw) |
| | SG1002K | SG2002K | SG3002K | SG6002K | N/A | 3 | Long Jaw (accessory kit - 3 jaws) |
| 8 | ■ | ◆ | ⌘ | ▷ | ▲ | 6 | Capscrew |
| 9 | ⌘ | + | ≈ | ↔ | ▼ | 3 | Strap |
| 10 | ■ | ◆ | ⌘ | ▷ | ▲ | 3 | Screw, Self-Centering |
| 11 | ● | ● | ● | ● | ● | 1 | Assembly, Self-Centering Ring |
| 12 | ● | ● | ● | ● | ● | 1 | Bushing, Self-Centering |
| 13 | ● | ● | ● | ● | ● | 1 | Body |
| 14 | RWH121900 | RCH202 | RCH302 | RCH603 | RCH1003 | 1 | Hydraulic Cylinder |
| 15 | CR400 | CR400 | CR400 | CR400 | CR400 | 1 | Hydraulic Coupler |
| 16 | FZ1055 | N/A | N/A | N/A | N/A | 1 | Adaptor |
| 17 | N/A | N/A | N/A | N/A | DD8992667 | 2 | Swivel Lifting Eye |
| 18 | HP1120 | HP2113 | HP2013 | HP5013 | ▲ | 2 | Kit, Mounting Screw (short) |
| 19 | N/A | HP2015 | HP3015 | HP5016 | HP10016 | 1 | Threaded Saddle |
| 20 | SGH1004 | SGH2004 | SGH3004 | SGH6004 | SGH10004 | 1 | Point Protector |

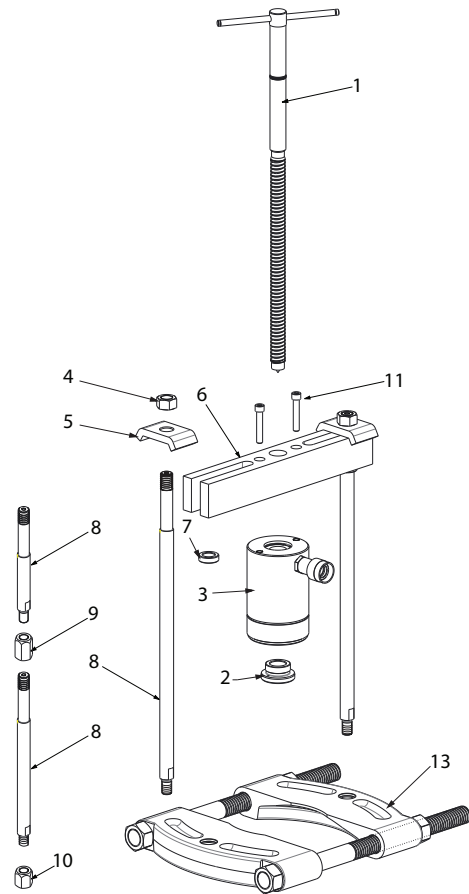
Notes:

- Included in Hardware Kit SG1006K.
- ◆ Included in Hardware Kit SG2006K.
- ⌘ Included in Hardware Kit SG3006K.
- ▷ Included in Hardware Kit SG6006K.
- ▲ Included in Hardware Kit SG10006K.
- Item not available as replacement part.
- ⌘ Included in Strap Kit SG1007K.
- +
- ≈ Included in Strap Kit SG3007K.
- ↔ Included in Strap Kit SG6007K.
- ▼ Included in Strap Kit SG10007K.

**Figure 3 - MPS Maintenance Set
(Bearing Race Puller)**



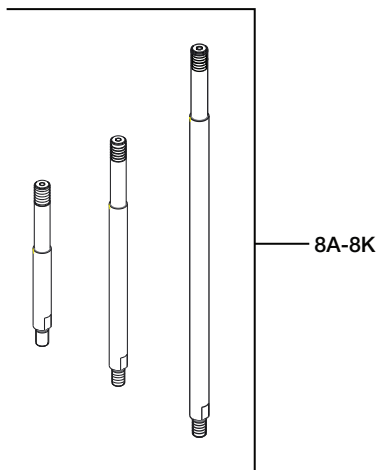
**Figure 4 - MPS Maintenance Set
(Cross Bearing Puller and Bearing
Separator Attachment)**



Repair Parts List for Figures 3 and 4

| Item | Master Puller Set Model/Part Number | | | | Qty. | | Description |
|------|-------------------------------------|--------------|--------------|--------------|--------|--------|---|
| | MPS14 | MPS24 | MPS36 | MPS64 | Fig. 3 | Fig. 4 | |
| 1 | SGH1001 | SGH2001 | SGH3001 | SGH6001 | 1 | 1 | Adjusting Rod (spindle) |
| 2 | N/A | HP2015 | HP3015 | HP5016 | 1 | 1 | Threaded Saddle |
| 3 | RWH121900 | RCH202 | RCH302 | RCH603 | 1 | 1 | Hydraulic Cylinder |
| 4 | HP2001 | HP2001 | HP3031 | HP5001 | 2 | 2 | Kit, Leg Nut |
| 5 | HP1105 | HP2105 | HP3135 | HP5102 | 2 | 2 | Slide Plate |
| 6 | HP1103 | HP2103 | HP3104 | HP5103 | 1 | 1 | Slotted Crosshead |
| 7 | HP1102 | HP2002 | HP3032 | N/A | 2 | 2 | Leg Washer |
| 8 | (See Fig. 5) | (See Fig. 5) | (See Fig. 5) | (See Fig. 5) | 1 | 1 | Leg |
| 9 | HP2031 | HP2031 | HP3041 | N/A | 1 | 1 | Kit, Leg Reducer (HP3041 includes 4 leg reducers) |
| 10 | HP2009 | HP2009 | HP3039 | N/A | 2 | 2 | Kit, Leg End |
| 11 | HP1120 | HP2113 | HP2013 | HP5013 | 2 | 2 | Kit, Mounting Screw (short) |
| | HP1213 | HP2213 | HP3113 | HP5113 | 2 | 2 | Kit, Mounting Screw (long) |
| 12 | BHP180 | BHP280 | BHP380 | BHP580 | 1 | - | Internal Bearing Race Puller |
| 13 | BHP181 | BHP282 | BHP382 | BHP582 | - | 1 | Bearing Separator Attachment |

Figure 5 - Legs
(For use with components
shown in Fig. 3 and 4)



| Repair Parts List for Figure 5 | | | | |
|--------------------------------|-----------------|------------|-------|-----------------------------------|
| Item | Leg Part Number | Leg Length | | Used on Master Puller Set Models: |
| | | inch | mm | |
| 8A | HP1136 | 4.2 | 106 | MPS14, BHP162, BHP1752, BHP1772 |
| 8B | HP1137 | 14.1 | 357 | |
| 8C | HP2006 | 9.4 | 240 | MPS24, BHP261G, BHP2751G, BHP262 |
| 8D | HP2007 | 16.5 | 420 | |
| 8E | HP2008 | 22.4 | 570 | |
| 8F | HP2012 | 4.5 | 115 | MPS36, BHP361G, BHP3751G, BHP362 |
| 8G | HP3036 | 8.0 | 204 | |
| 8H | HP3037 | 18.1 | 460 | |
| 8I | HP3038 | 28.0 | 710 | MPS64, BHP561G, BHP5751G, BHP562 |
| 8J | HP5007 | 24.0 | 608.5 | |
| 8K | HP5008 | 34.0 | 863.5 | |

* All items include 1 leg.

NOTES
