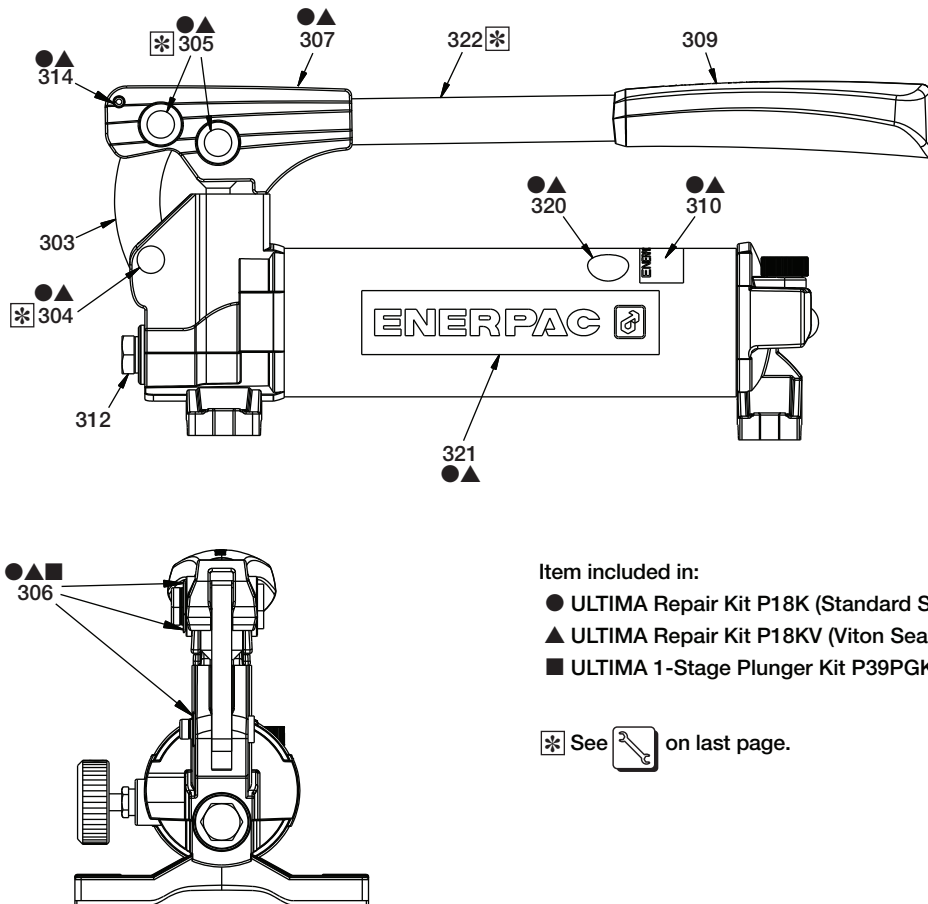


Repair Parts Sheet	Revision	Revision Date	Product Code Beginning
L4018	D	02/2014	J

Fig. 1, Beam, Handle and Labels



Item included in:

- ULTIMA Repair Kit P18K (Standard Seals)
- ▲ ULTIMA Repair Kit P18KV (Viton Seals)
- ULTIMA 1-Stage Plunger Kit P39PGK

* See  on last page.

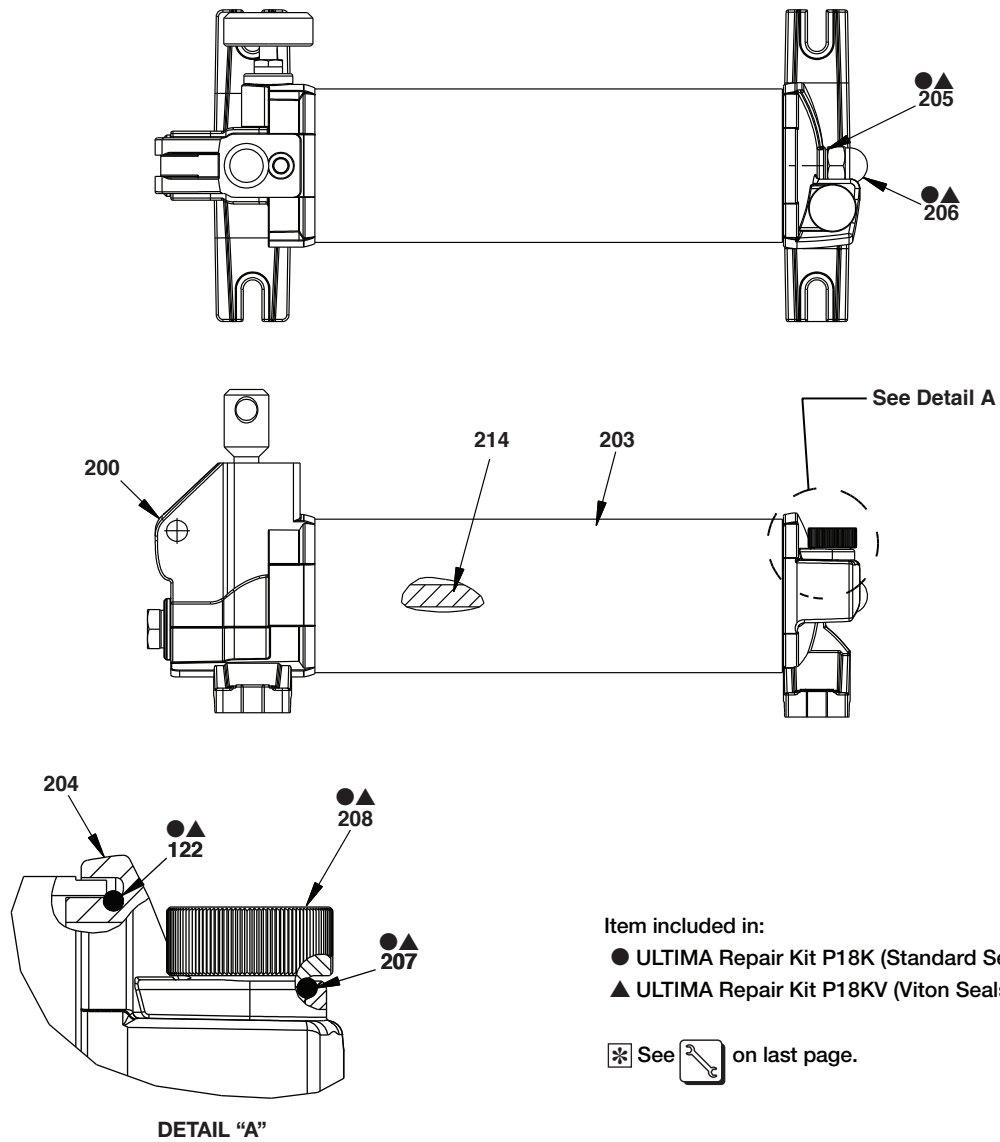
Repair Parts List, Fig. 1

L4018

Item	Part Number	Qty.	Description	Item	Part Number	Qty.	Description
303	DD1634062	1	Linkage	310	●▲DD2537026	1	Decal, Product Spec
304	●▲DD1649061	1	Pin	312	R515245-2	1	Plug, Shipping
305	●▲DD1650061	2	Pin	314	●▲CCA0523057-1A	1	Spring Pin, M5, 24mm
306	●▲■CB415044	3	Retaining Ring	320	●▲DC7887026	1	Decal, Read Instruction
307	DD3025900	1	Beam Subassembly (includes item 314)	321	●▲DD2828026	2	Decal, Enerpac
309	DX4160550	1	Grip, Handle	322	DD2830070	2	Tubing, Handle

IMPORTANT: Shaded items are available only in kits (not sold separately).

Fig. 2, Pump Reservoir



Item included in:
 ● ULTIMA Repair Kit P18K (Standard Seals)
 ▲ ULTIMA Repair Kit P18KV (Viton Seals)

* See  on last page.

DETAIL "A"

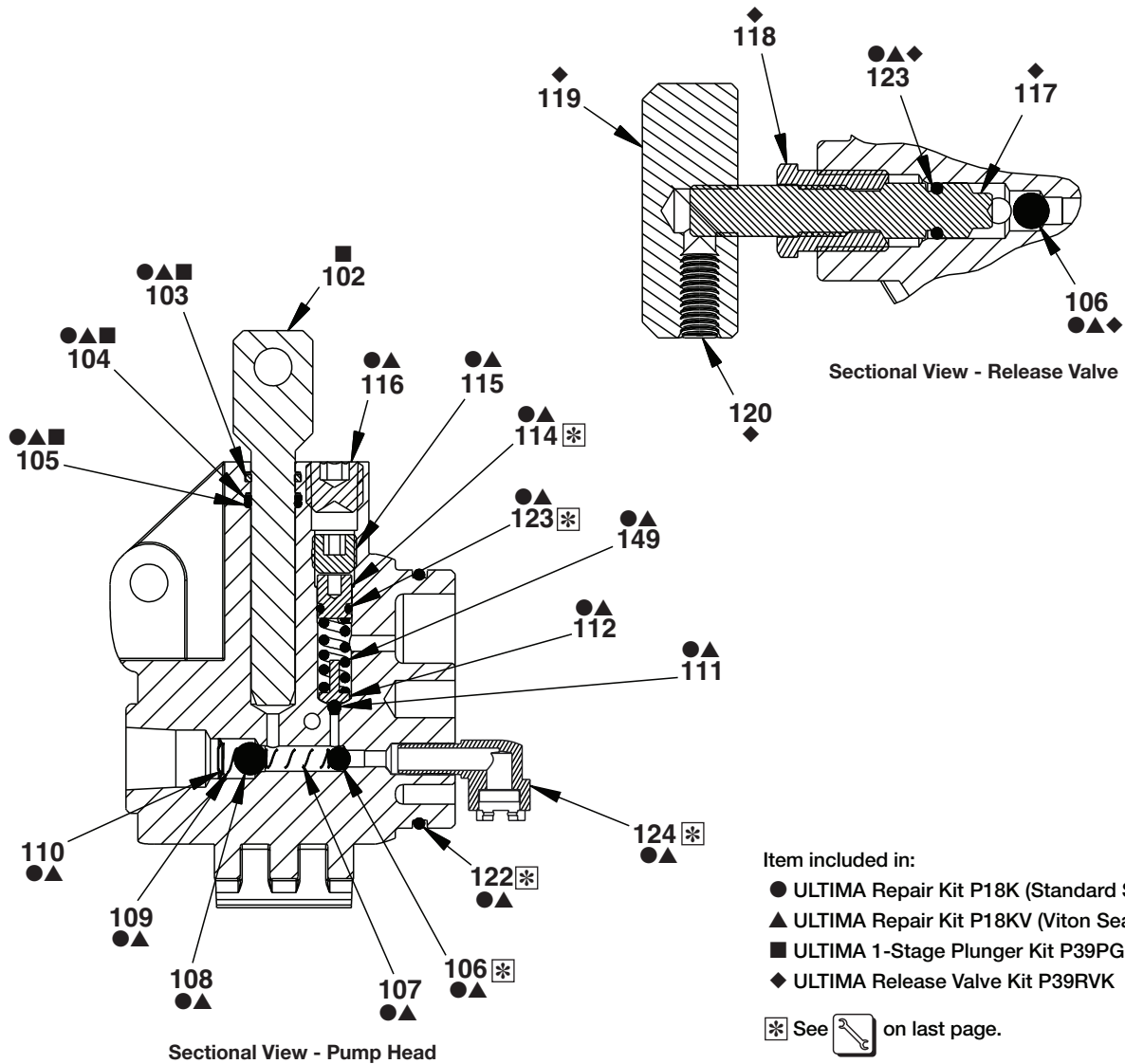
Repair Parts List, Fig. 2

L4018

Item	Part Number	Qty.	Description	Item	Part Number	Qty.	Description
122	● B1277503	1	O-Ring, Size -142 (Std.)	205	●▲ CB813167	1	Copper Gasket
	▲ B1277203	1	O-Ring, Size -142 (Viton)	206	●▲ CL341055	1	Acorn Nut, 0.438-14
200	(See Fig. 3)	1	Pump Head (Note: not sold as subassembly)	207	● B1010503	1	O-Ring, Size -112 (Std.)
203	DD2827025	1	Reservoir		▲ B1112203	1	O-Ring, Size -112 (Viton)
204	DD2547020	1	End Cap	208	●▲ DD3063009	1	Plug, Oil Fill
				214	DD2829107	1	Tie Rod

IMPORTANT: Shaded items are available only in kits (not sold separately).

Fig. 3, Pump Head



Repair Parts List, Fig. 3

L4018

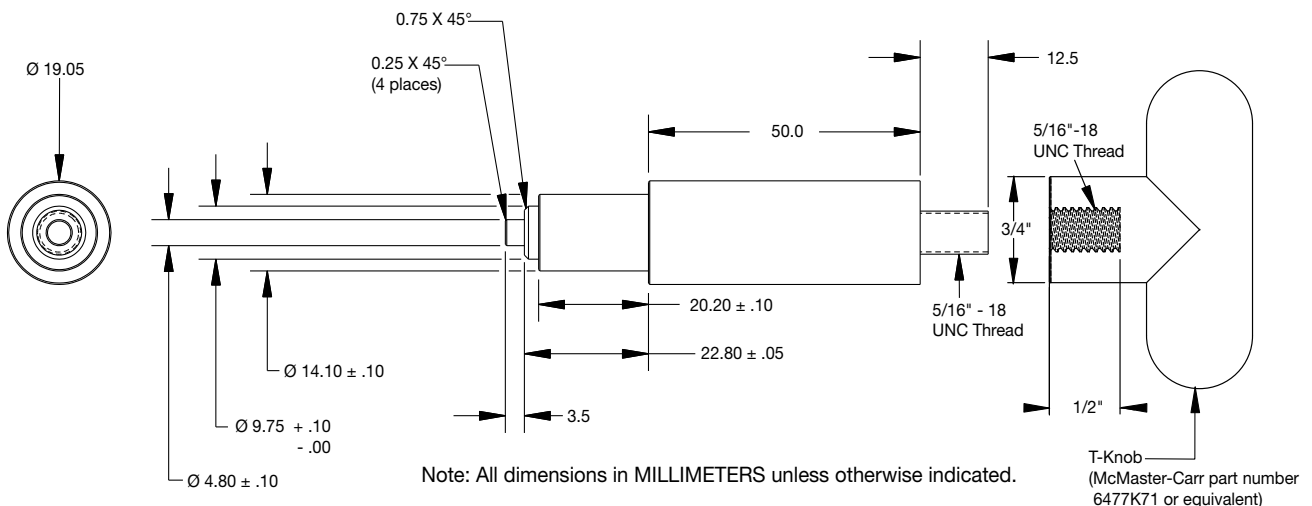
Item	Part Number	Qty.	Description	Item	Part Number	Qty.	Description
102	■ DD3051051	1	Plunger, P39	114	●▲ DC7234009	1	Plug
103	●■ B1013517	1	Sq. Ring, Size -013 (Std.)	115	●▲ DC10131048	1	Set Screw, 7/16-20 x 0.38
	▲ B1013518	1	Sq. Ring, Size -013 (Viton)	116	●▲ A1008245	1	Flush Plug, 1/4 inch
104	●▲■ B1013565	1	Back-up Ring, -013	117	◆ DD3030040	1	Spindle
105	●■ B1013803	1	O-Ring, Size -013 (Std.)	118	◆ DD2747225	1	Cartridge
	▲ B1013203	1	O-Ring, Size -013 (Viton)	119	◆ DX4452147	1	Knob, Release Valve
106	●▲◆ B1006016	2	Ball, 7/32 inch Dia.	120	◆ DD3082028	1	Set Screw, M6 x 1 x 16mm
107	●▲ A8197110	1	Spring	122	● B1277503	1	O-Ring, Size -142 (Std.)
108	●▲ B1009016	1	Ball, 5/16 inch Dia.		▲ B1142203	1	O-Ring, Size -142 (Viton)
109	●▲ CF184110	1	Spring, Conical	123	◆● B1004503	2	O-Ring, Size -009 (Std.)
110	●▲ DX4733549	1	Retaining Ring		▲ B1009203	2	O-Ring, Size -009 (Viton)
111	●▲ B1003016	1	Ball, 1/8 inch Dia.	124	●▲ DD4551900	2	Filter Assembly, Intake
112	●▲ A8038570	1	Ball Cap	149	●▲ DD2831110	1	Spring

IMPORTANT: Shaded items are available only in kits (not sold separately).



❖ Service Information		L4018
Fig.	Item	Torque / notes
1	304	Apply grease before assembly.
1	305	Apply grease before assembly.
1	322	Apply Loctite 243 to threads before assembly. Apply torque by turning one additional turn after hand tight.
2	206	28 - 35 Nm [21 - 26 Ft - Lbs.]
2	208	Hand tighten until fully installed.
3	106	Coin ball seat before installing new ball.
3	108	Coin ball seat before installing new ball.
3	110	Use installation tool to install retaining ring. See Fig. 4 for fabrication instructions.
3	111	Coin ball seat before installing new ball.
3	114	Lubricate with grease before assembly.
3	115	Turn set screw to adjust relief valve pressure setting. DO NOT set pressure higher than 200 Bar [2850 Psi]
3	116	After setting relief valve: Torque to 11,0 - 14,5 Nm [8.1 - 10.7 Ft - Lbs.]
3	118	27 - 35 Nm [20.0 - 25.8 Ft - Lbs.]
3	120	11.0-14.5 Nm [8.1 - 10.7 Ft- Lbs]
3	122	Lubricate with grease before assembly.
3	123	Lubricate with grease before assembly.
3	124	Assemble with screen open end down.

**Fig. 4, Retaining Ring Installation Tool
(fabricate as shown)**



To maintain your warranty:

- Use only Enerpac Oil
- Have your products inspected and repaired by an Enerpac Authorized Service Center

ENERPAC

Visit www.enerpac.com for the location of the Enerpac Authorized Service Center nearest you.