

**PC-11 Foot Pedal Conversion Kit  
ULTIMA Series Hand Pumps**

L3087 Rev. C 04/13

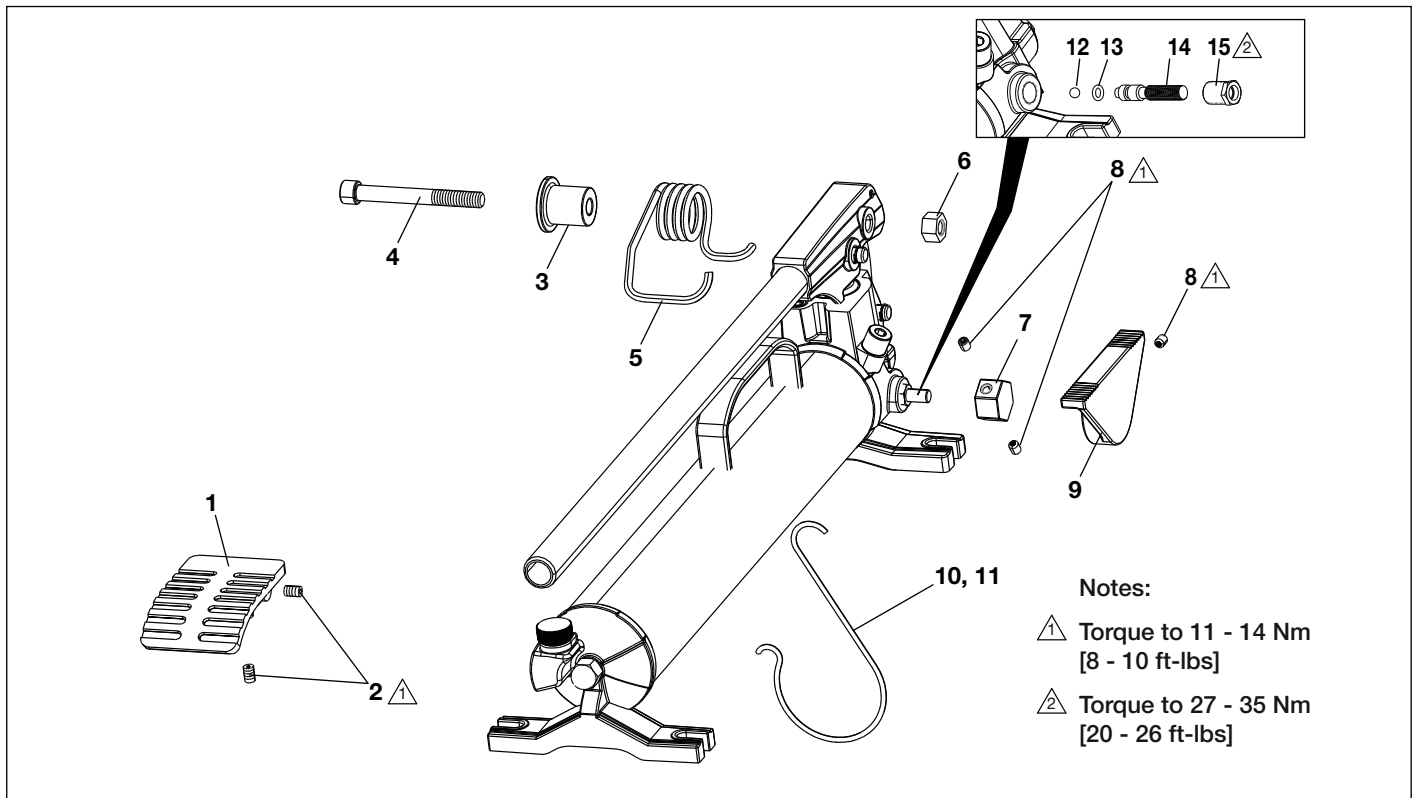
**1.0 DESCRIPTION**

The PC-11 Conversion Kit converts Enerpac ULTIMA Series hand pumps to foot operation. The kit is designed for use only with ULTIMA series models P-18, P-39, P-77, P-80 and P-801.

**2.0 IMPORTANT RECEIVING INSTRUCTIONS**

Visually inspect all components for shipping damage. If any damage is found, notify carrier at once. Shipping damage is NOT covered by warranty. The carrier is responsible for all repair or replacement costs resulting from damage in shipment.

**3.0 PARTS LIST**



Parts List for PC-11 Foot Pedal Conversion Kit

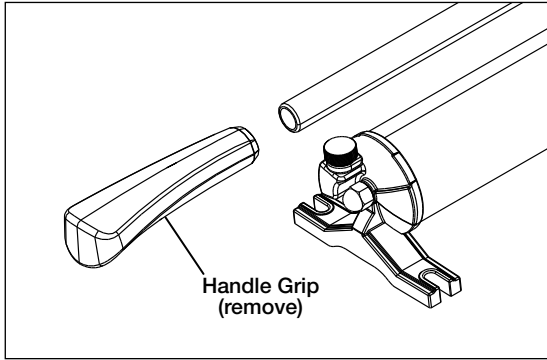
Item	Part Number	Qty.	Description	Item	Part Number	Qty.	Description
1	C413218	1	Foot Pedal	9	DX4744318	1	Foot Lever, Release Valve
2	C514173	2	Set Screw, 0.25-20 x 038"	10	DD3093017	1	Handle Retainer Hook (P-18, P-39, P-77)
3	CK317186	1	Spring Spacer	11	DD3094017	1	Handle Retainer Hook (P-80 and P-801)
4	B1087028X	1	SHCS, 3/8-16 x 3-1/4" Lg.	12	B1006016	1	Ball, 7/32" Diameter
5	DX4739110	1	Spring, Torsion	13	B1004503	1	O-Ring
6	C428120	1	Hex Nut, Locking	14	DD3030040	1	Spindle, Hardened
7	DX4754147	1	Lever Adapter	15	DD2747225	1	Holder, Spindle
8	DD3091028	3	Set Screw, M6 x 1.0 x 8mm				



**WARNING:** Relieve hydraulic pressure and disconnect hydraulic hoses before beginning any maintenance or repairs. Standard safety procedures are to be followed during disassembly and reassembly to minimize any possibility of injury.

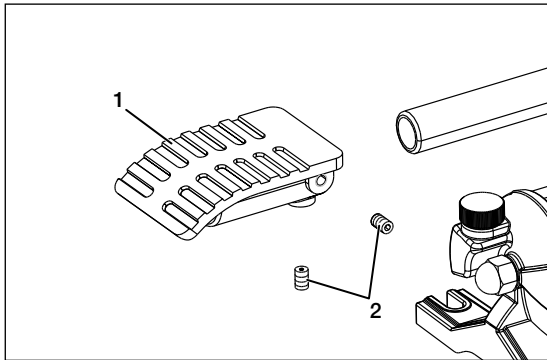
## 4.0 REMOVAL OF OLD PARTS

1. Remove the hand grip from the pump handle. See *Figure A*.



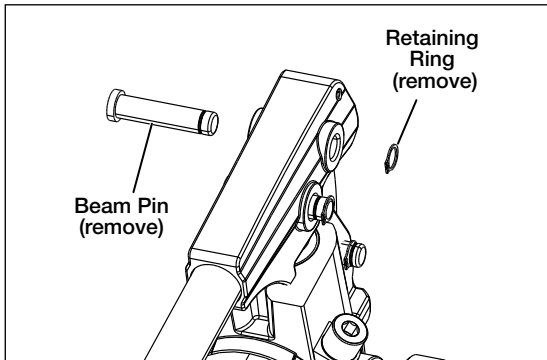
**Figure A**

2. Position the foot pedal (kit item 1) on the pump handle. Install and tighten the two mounting screws (kit item 2). See *Figure B*.



**Figure B**

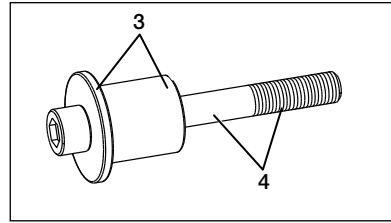
3. Remove the beam pin and retaining ring securing the handle and beam assembly to the pump link. See *Figure C*.



**Figure C**

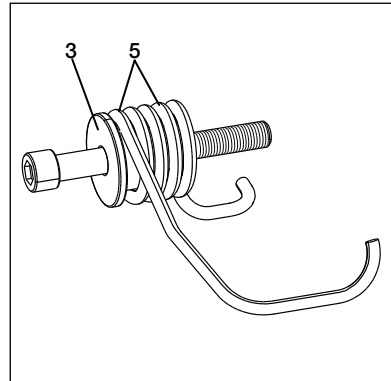
## 5.0 FOOT PEDAL INSTALLATION

1. Install the spring spacer (kit item 3) over the beam capscrew (kit item 4). See *Figure D*.



**Figure D**

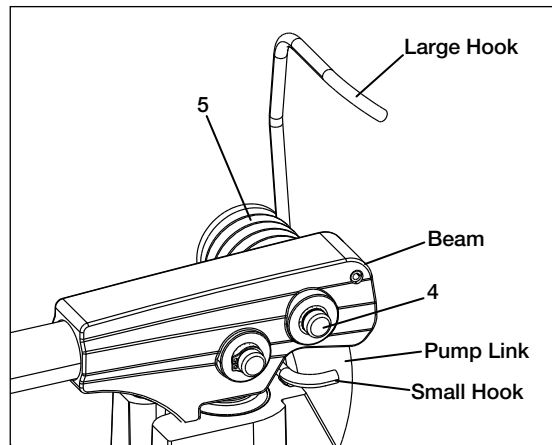
2. Install torsion spring (kit item 5) over the spring spacer (kit item 3). See *Figure E*.



**Figure E**

**Note:** Be sure that torsion spring (kit item 5) is positioned as shown in *Figure E*. The small spring hook must face the pump link when the subassembly is installed in the next step.

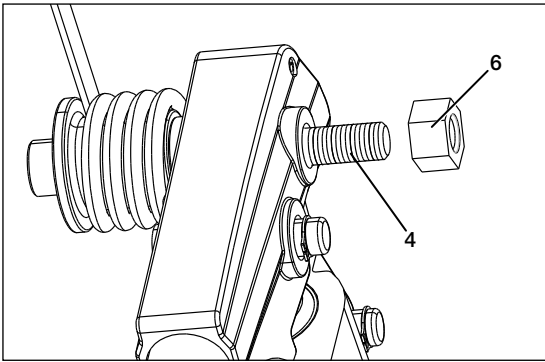
3. From the filler plug side of the pump, insert the beam capscrew (kit item 4) through the opening in the beam. Then, slide the capscrew through the hole in the pump link and through the opening on the other side of the beam. See *Figure F*.



**Figure F**

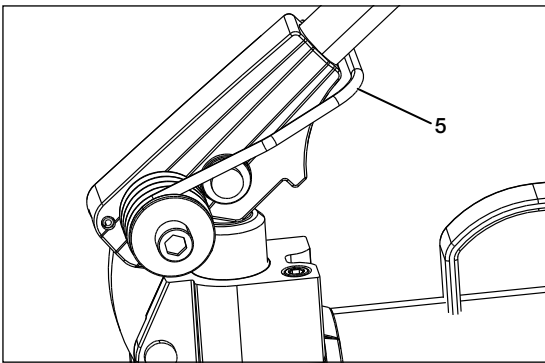
**Note:** Large hook of torsion spring (kit item 5) must be positioned above the beam. Small hook must be positioned behind the pump link.

4. Install locking hex nut (kit item 6) to secure the beam capscrew (kit item 4). See *Figure G*.



**Figure G**

5. Raise the pump handle to maximum stroke. Using a small pry bar, position the large hook of the torsion spring (kit item 5) under the beam. See *Figure H*.

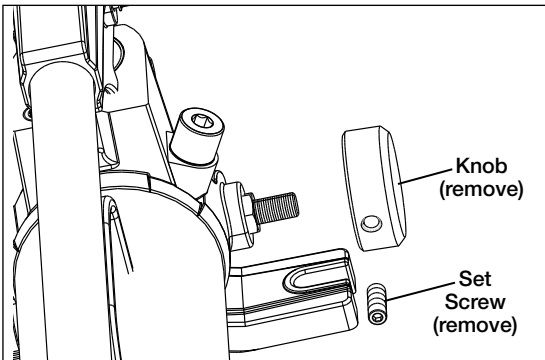


**Figure H**

## 6.0 RELEASE VALVE FOOT LEVER INSTALLATION

1. Loosen and remove set screw. Unscrew and remove knob. See *Figure I*.

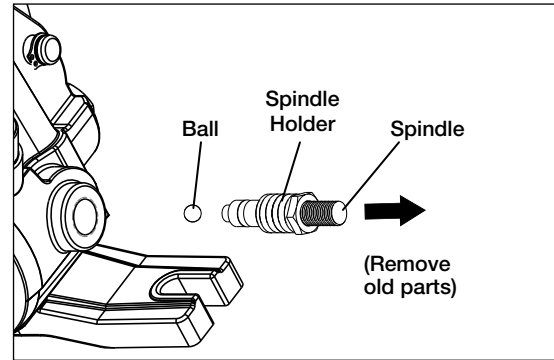
**Note:** If the knob does not turn freely, a pliers can be used to unscrew and remove the knob.



**Figure I**

2. Unscrew the spindle holder. Remove the spindle holder and spindle as an assembly. Ball will drop out after assembly is removed. See *Figure J*.

**Note:** All parts removed in step 2 should be discarded. They will be replaced with new parts.

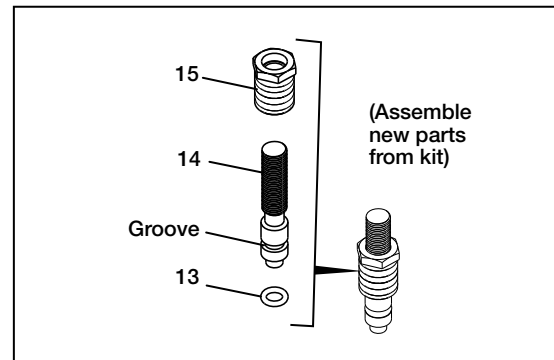


**Figure J**

**IMPORTANT:** In the following steps, use only new parts from kit. Do not intermix old and new parts.

3. Thread the new spindle holder (kit item 15) onto the new spindle (kit item 14). Be sure that hex is facing out, away from the spindle center. See *Figure K*.

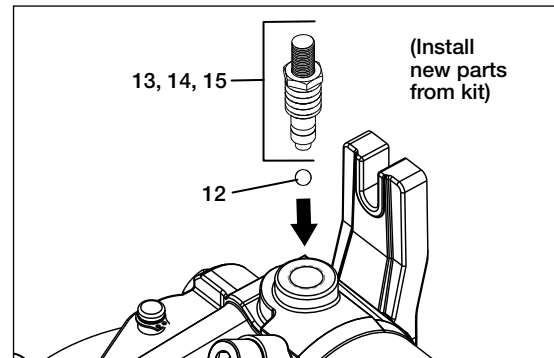
Check that new O-ring (kit item 13) is installed in groove on new spindle (kit item 14). Be sure to install O-ring if it was not pre-installed at the factory.



**Figure K**

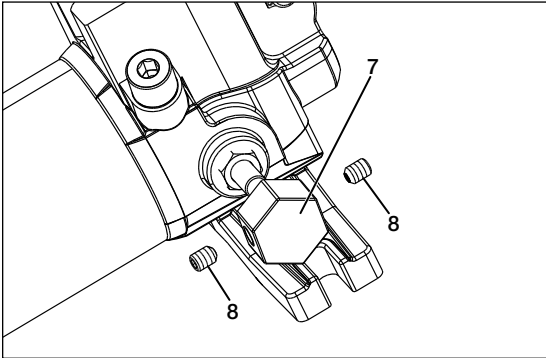
4. Lay the pump on its side and place the new ball (kit item 12) into the release valve opening. Then, install the new spindle assembly parts (kit items 13, 14, 15). See *Figure L*.

Torque the new spindle holder (kit item 15) to 20 - 26 ft-lbs [27 - 35 Nm].



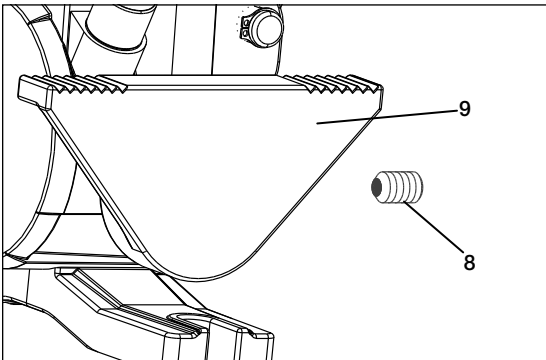
**Figure L**

5. Install the foot lever adaptor (kit item 7) on the release valve spindle. Secure the adaptor with two set screws (kit item 8). Torque each setscrew to 11 - 14 Nm [8 - 10 ft-lbs]. See *Figure M*.



**Figure M**

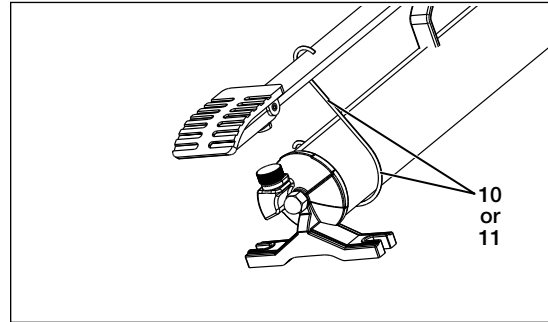
6. Position the foot lever (kit item 9) over the foot lever adaptor (kit item 7). Be sure that serrations are facing upward. Secure the foot lever with set screw (kit item 8). See *Figure N*.



**Figure N**

## 7.0 HANDLE RETAINER HOOK INSTALLATION

Install the handle retainer hook around the pump reservoir. See *Figure O*.



**Figure O**

**Note:** Two handle retainer hooks are included in the PC-11 kit. Use the small retainer hook (kit item 10) for models P-18, P-39 and P-77. Use the large retainer hook (kit item 11) for models P-80 and P-801.

## 8.0 ADDITIONAL INFORMATION

1. When pump is not in use, lower the handle and secure it with the handle retainer hook (kit item 10 or 11).
2. Periodically lubricate the pump linkage and torsion spring (kit item 5) with lightweight oil.



**CAUTION:** Only slight pressure is necessary to open and close the release valve when using the foot lever. Excessive force will damage the release valve seat. Such damage is not covered under warranty.

3. Refer to pump instruction sheet for pump operation and maintenance instructions and important safety information.

**ENERPAC** 

Visit [www.enerpac.com](http://www.enerpac.com) for the location of the Enerpac Authorized Service Center nearest you.