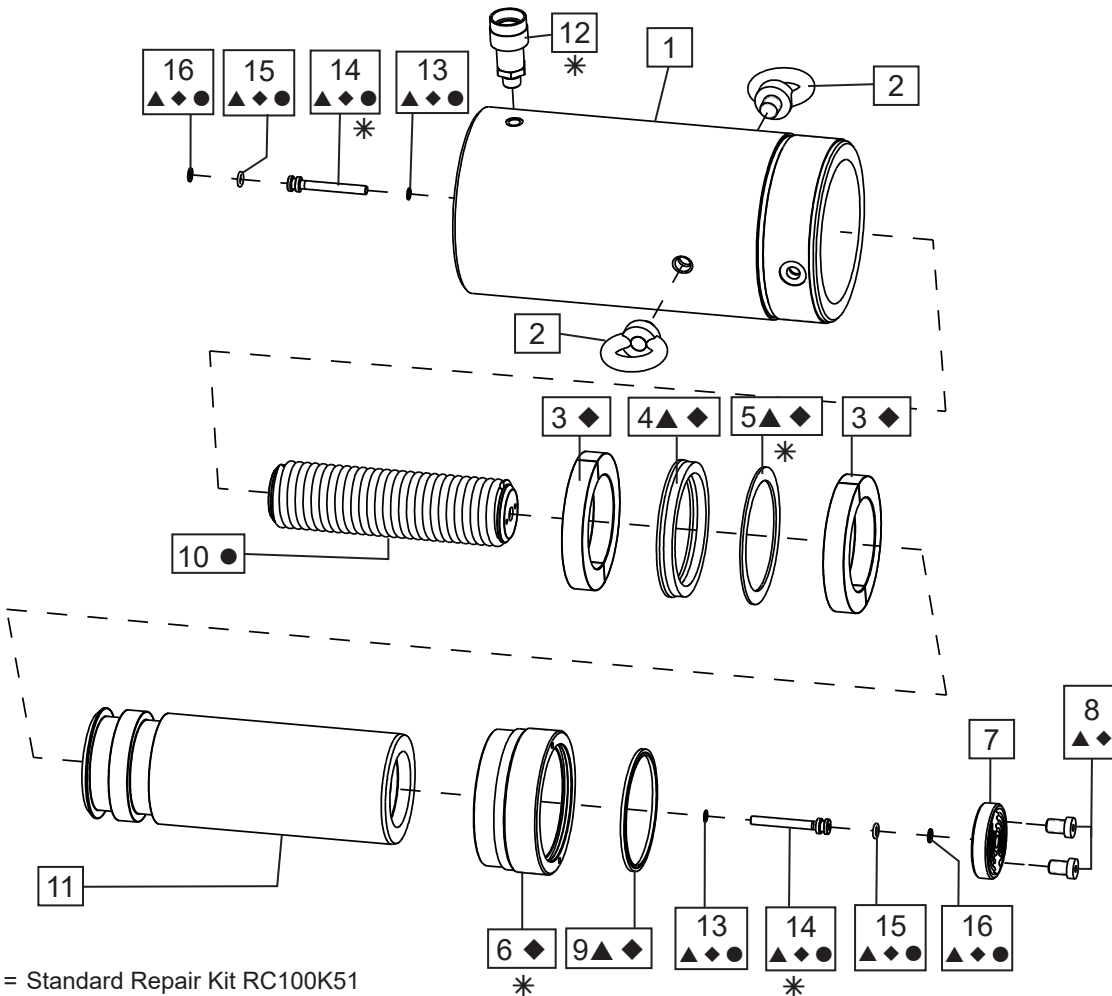


| | | | |
|--------------------|----------|---------------|------------------------|
| Repair Parts Sheet | Revision | Revision Date | Product Code Beginning |
| L3023 | Rev. E | 10/22 | D |

Fig. 1, Cylinder Assembly



- ▲ = Standard Repair Kit RC100K51
- = Spring Kit RC100K31 (RC-1006)
 RC100K32 (RC-10010)
- ◆ = Premium Repair Kit RC100K71
- * = See *Notes* section for additional information.



**Note: See Page 2
 for parts list.**

| * Notes | |
|---------|--|
| Item | Torque / notes |
| 5 | Washer to be placed with the sharp edge towards U-Cup. |
| 6 | Secure with Loctite 222. |
| 12 | 54 - 81 Nm, 40 - 60 ft - Lbs |
| 12 | Use Loctite 545 or Teflon tape. |
| 14 | 20 - 24 Nm, 90 - 110 in - Lbs |

Repair Parts List, Figure 1

L3023

| Item | Description | Qty. | Part Number | |
|------|----------------------------|------|-----------------|-----------------|
| | | | RC-1006 | RC-10010 |
| 1 | Base | 1 | (Not available) | (Not available) |
| 2 | Eye Bolt | 2 | BSS6350D | BSS6355D |
| 3 | Bearing | 2 | ◆ | ◆ |
| 4 | U-Cup | 1 | ▲◆ | ▲◆ |
| 5 | Washer | 1 | ▲◆ | ▲◆ |
| 6 | Stop Ring | 1 | ◆ | ◆ |
| 7 | Saddle, Grooved (incl. #8) | 1 | L345045SR | L345045SR |
| 8 | Cap Screw | 2 | ▲◆ | ▲◆ |
| 9 | Wiper Ring | 1 | ▲◆ | ▲◆ |
| 10 | Spring | 1 | ● | ● |
| 11 | Plunger | 1 | (Not available) | (Not available) |
| 12 | Coupler | 1 | CR-400 | CR-400 |
| 13 | Gasket | 2 | ▲◆● | ▲◆● |
| 14 | Spring Retainer | 2 | ▲◆● | ▲◆● |
| 15 | O-Ring | 2 | ▲◆● | ▲◆● |
| 16 | Back-up | 2 | ▲◆● | ▲◆● |
| N/S | Dust Cap | 1 | ▲◆ | ▲◆ |
| N/S | Thread Protector | 1 | ▲◆ | ▲◆ |
| N/S | O-Ring Coupler | 1 | ▲◆ | ▲◆ |
| N/S | Enerpac Decal | 1 | ▲◆ | ▲◆ |
| N/S | Warning Decal | 1 | ▲◆ | ▲◆ |
| ▲ | Repair Kit, Standard | - | RC100K51 | RC100K51 |
| ◆ | Repair Kit, Premium | - | RC100K71 | RC100K71 |
| ● | Spring Kit | - | RC100K31 | RC100K32 |

Notes:

Premium repair kit includes all standard (▲) repair kit items plus additional premium (◆) items.

N/S = Item not shown.



**To maintain your warranty,
have your products inspected and repaired
by an authorised Enerpac Service Centre**

www.enerpac.com