

Repair Parts Sheet	Revision	Revision Date	Product Code Beginning
L3021	Rev. F	10/22	C

▲ = Standard Repair Kit

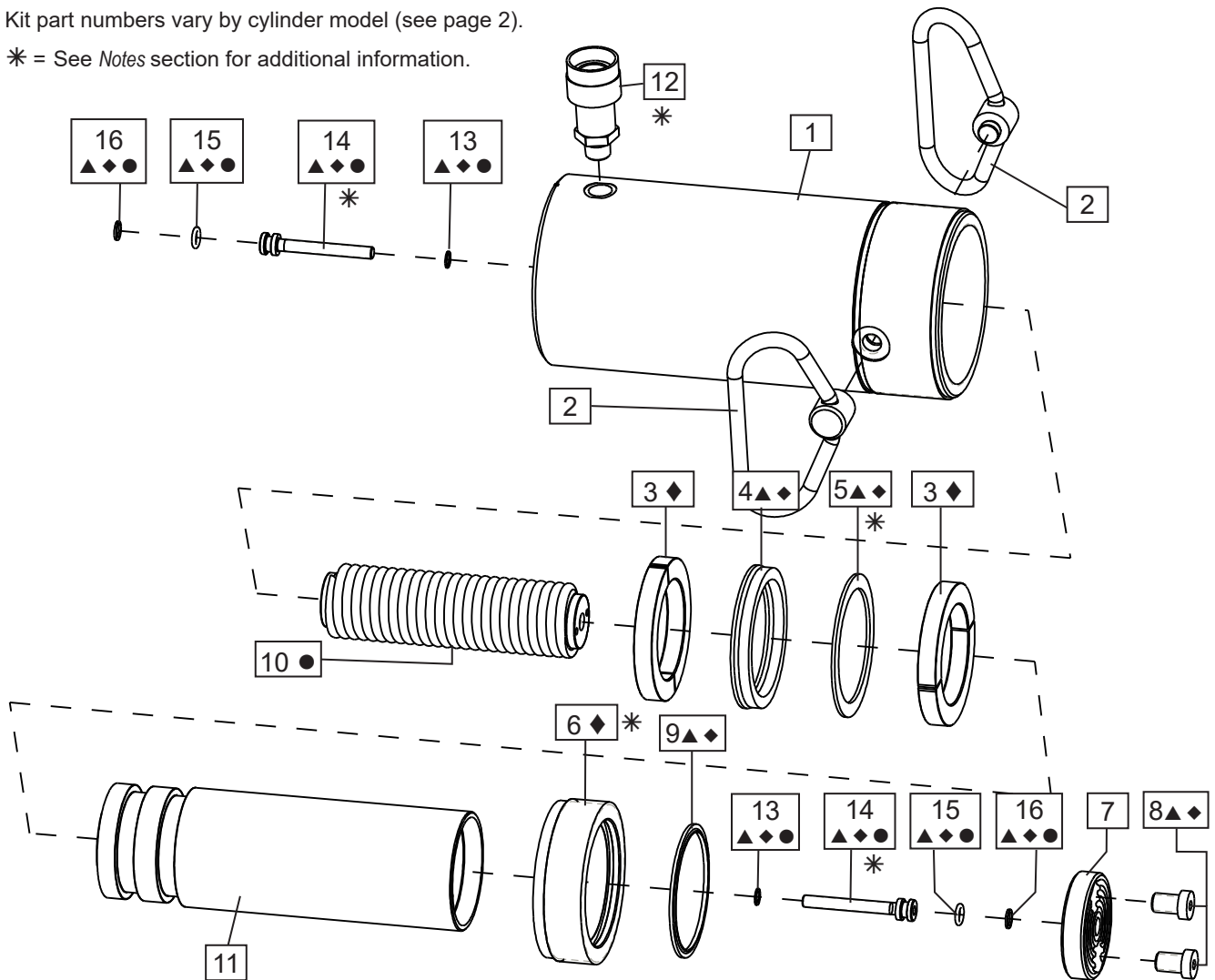
● = Spring Kit

◆ = Premium Repair Kit

Kit part numbers vary by cylinder model (see page 2).

* = See Notes section for additional information.

Fig. 1, Cylinder Assembly



**Note: See Page 2
for parts list.**

(*) Notes	
Item	Torque / notes
5	Washer to be placed with the sharp edge towards U-Cup.
6	Secure with Loctite 222.
12	54 - 81 Nm, 40 - 60 Ft - Lbs
12	Use Loctite 545 or Teflon tape.
14	10.2 - 12.4 Nm, 90 - 110 In - Lbs

Repair Parts List, Figure 1

L3021

Item	Description	Qty.	Part Number			
			RC-502	RC-504	RC-506	RC-5013
1	Base	1	(not available)	(not available)	(not available)	(not available)
2	Handle	2	ACH75	ACH75	ACH75	ACH75
3	Bearing ◆	2	DD2314107	DD2314107	DD2314107	DD2314107
4	U-Cup ▲◆	1	DC7079041	DC7079041	DC7079041	DC7079041
5	Washer ▲◆	1	L343108	L343108	L343108	L343108
6	Stop Ring ◆	1	Y193044	Y193044	Y193044	Y193044
7	Saddle, Grooved (incl. #8)	1	L345045SR	L345045SR	L345045SR	L345045SR
8	Cap Screw ▲◆	2	L661028	L661028	L661028	L661028
9	Wiper Ring ▲◆	1	G732044	G732044	G732044	G732044
10	Spring ●	1	DD2344110	DD2345110	DD2322110	DD2344110
11	Plunger	1	(not available)	(not available)	(not available)	(not available)
12	Coupler	1	CR-400	CR-400	CR-400	CR-400
13	Gasket ▲◆●	2	C846037	C846037	C846037	C846037
14	Spring Retainer ▲◆●	2	DD1543160	DD1543160	DD1543160	DC5469160
15	O-Ring ▲◆●	2	B1110903	B1110903	B1110903	B1110903
16	Back-up ▲◆●	2	B1110564	B1110564	B1110564	B1110564
N/S	Dust Cap ▲◆	1	DD1782020	DD1782020	DD1782020	DD1782020
N/S	Thread Protector ▲◆	1	DD1778271	DD1778271	DD1778271	DD1778271
N/S	O-Ring Coupler ▲◆	1	B1116803	B1116803	B1116803	B1116803
N/S	Enerpac Decal ▲◆	1	DD2217026	DD2217026	DD2217026	DD2217026
N/S	Warning Decal ▲◆	1	DD2216026	DD2216026	DD2216026	DD2216026
▲	Repair Kit, Standard	-	RC50K51	RC50K51	RC50K51	RC50K52
◆	Repair Kit, Premium	-	RC50K71	RC50K71	RC50K71	RC50K72
●	Spring Kit	-	RC50K31	RC50K32	RC50K33	RC50K34

Notes:

Premium repair kit includes all standard (▲) repair kit items plus additional premium (◆) items.

N/S = Item not shown.

IMPORTANT: Shaded items are available only in kits (not sold separately).

Cylinders with Viton components only: Order Repair Kit RC506KV in addition to Repair Kit RC50K51, RC50K52, RC50K71 or RC50K72 (refer to chart, above). Repair Kit RC506KV includes Viton components for items 4 and 9. Standard components are used in other locations.



To maintain your warranty:

- Use only Enerpac Oil
- Have your products inspected and repaired by an Enerpac Authorized Service Center



Visit www.enerpac.com for the location of the Enerpac Authorized Service Center nearest you.