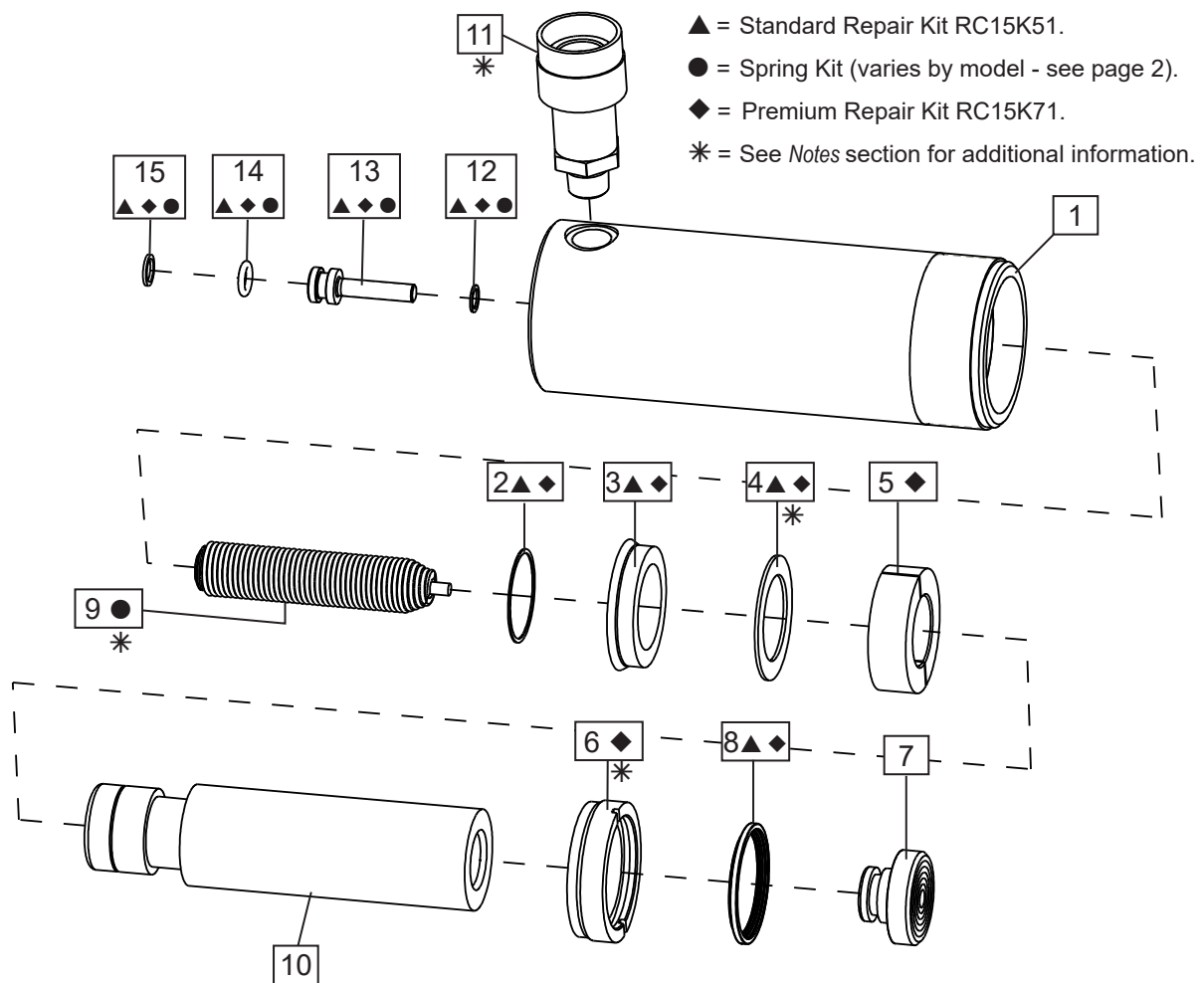


Repair Parts Sheet	Revision	Revision Date	Product Code Beginning
L3016	Rev. F	10/22	B & A3318K

### Fig. 1, Cylinder Assembly



**Note: See Page 2  
for parts list.**

**(\*) Notes**

Item	Torque / notes
4	Washer to be placed with the sharp edge towards U-Cup.
6	7.9 - 10.2 Nm, 70 - 90 In - Lbs
6	Secure with Loctite 222.
9	5.4 - 6.8 Nm, 4 - 6 Ft - Lbs
11	54 - 81 Nm, 40 - 60 Ft - Lbs
11	Use Loctite 545 or Teflon tape.

## Repair Parts List, Figure 1

# L3016

Item	Description	Qty.	Part Number		
			RC-151	RC-152	RC-154
1	Base	1	(Not Available)	(Not Available)	(Not Available)
2	Retaining Ring ▲ ◆	1	L227044	L227044	L227044
3	U-Cup ▲ ◆	1	CF297041	CF297041	CF297041
4	Washer ▲ ◆	1	L231108	L231108	L231108
5	Rod Bearing ◆	1	CF295107	CF295107	CF295107
6	Stop Ring ◆	1	CF294044	CF294044	CF294044
7	Saddle, Grooved	1	A152G	A152G	A152G
8	Wiper Ring ▲ ◆	1	CF296044	CF296044	CF296044
9	Spring ●	1	DD2254110	DD2254110	DD2264110
10	Plunger	1	(Not Available)	(Not Available)	(Not Available)
11	Coupler	1	CR-400	CR-400	CR-400
12	Gasket ▲ ◆ ●	2	C846037	C846037	C846037
13	Spring Retainer ▲ ◆ ●	2	DD2065160	DD2065160	DD2065160
14	O-Ring ▲ ◆ ●	2	B1110903	B1110903	B1110903
15	Ring, Back-up ▲ ◆ ●	2	B1110564	B1110564	B1110564
N/S	Dust Cap ▲ ◆	1	DD1782020	DD1782020	DD1782020
N/S	Thread Protector ▲ ◆	1	DD1775271	DD1775271	DD1775271
N/S	O-Ring Coupler ▲ ◆	1	B1116803	B1116803	B1116803
N/S	Enerpac Decal ▲ ◆	1	DD2214026	DD2214026	DD2215026
N/S	Warning Decal ▲ ◆	1	CH272026	CH272026	DA5625026
N/S	O-Ring Saddle ▲ ◆	1	B1208503	B1208503	B1208503
▲	Repair Kit, Standard	-	RC15K51	RC15K51	RC15K51
◆	Repair Kit, Premium	-	RC15K71	RC15K71	RC15K71
●	Spring Kit	-	RC15K31	RC15K31	RC15K32

**Notes:**

Premium repair kit includes all standard (▲) repair kit items plus additional premium (◆) items.

N/S = Item not shown.

**IMPORTANT:** Shaded items are available only in kits (not sold separately).

Cylinders with Viton components only: Order Repair Kit RC156KV in addition to Repair Kit RC15K51 or RC15K71. Repair Kit RC156KV includes Viton components for items 3 and 8. Standard components are used in other locations.



[www.enerpac.com](http://www.enerpac.com)