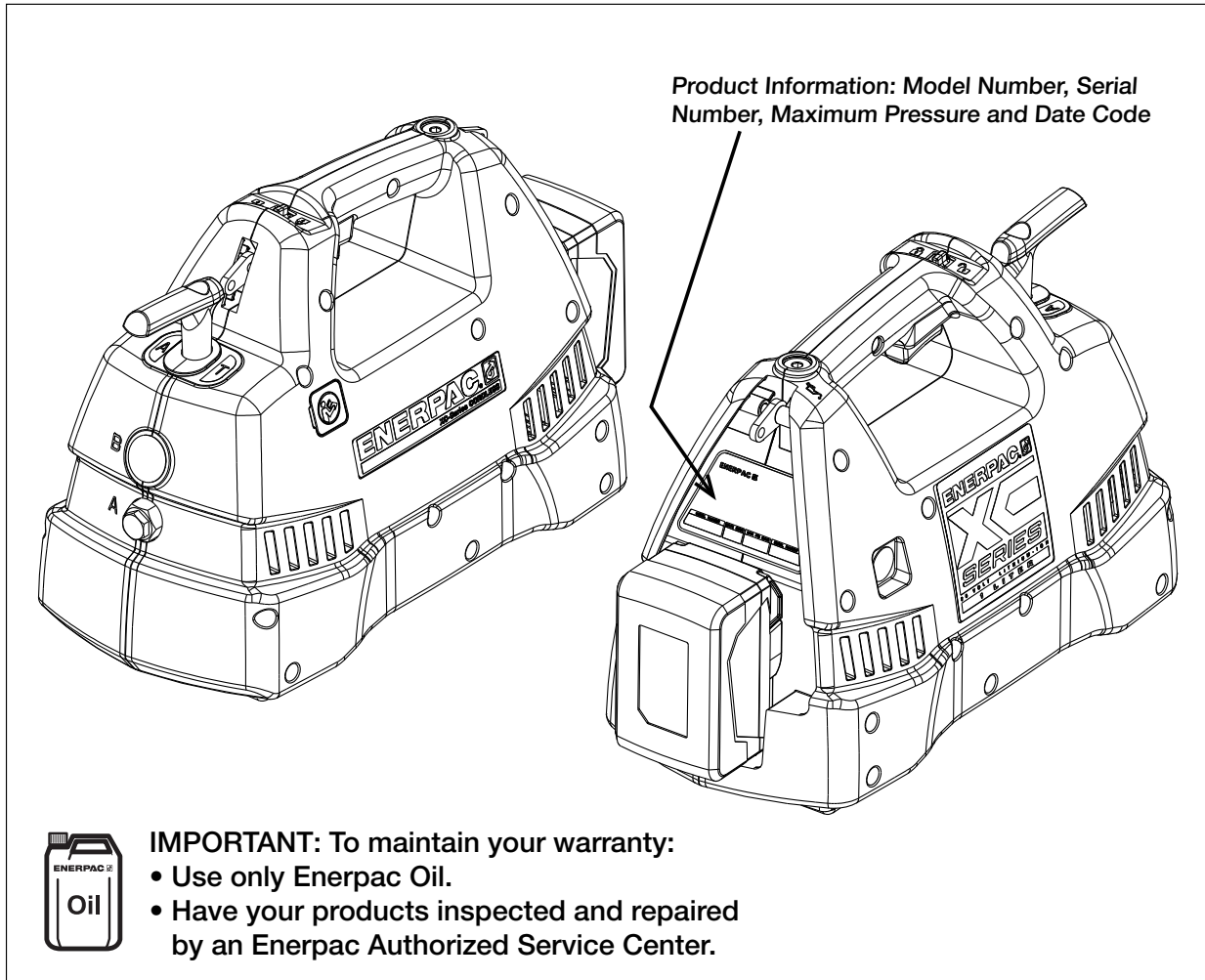


Document Number	Document Revision	Document Revision Date	Product Date Code Beginning With
L4006	A	01/2013	A



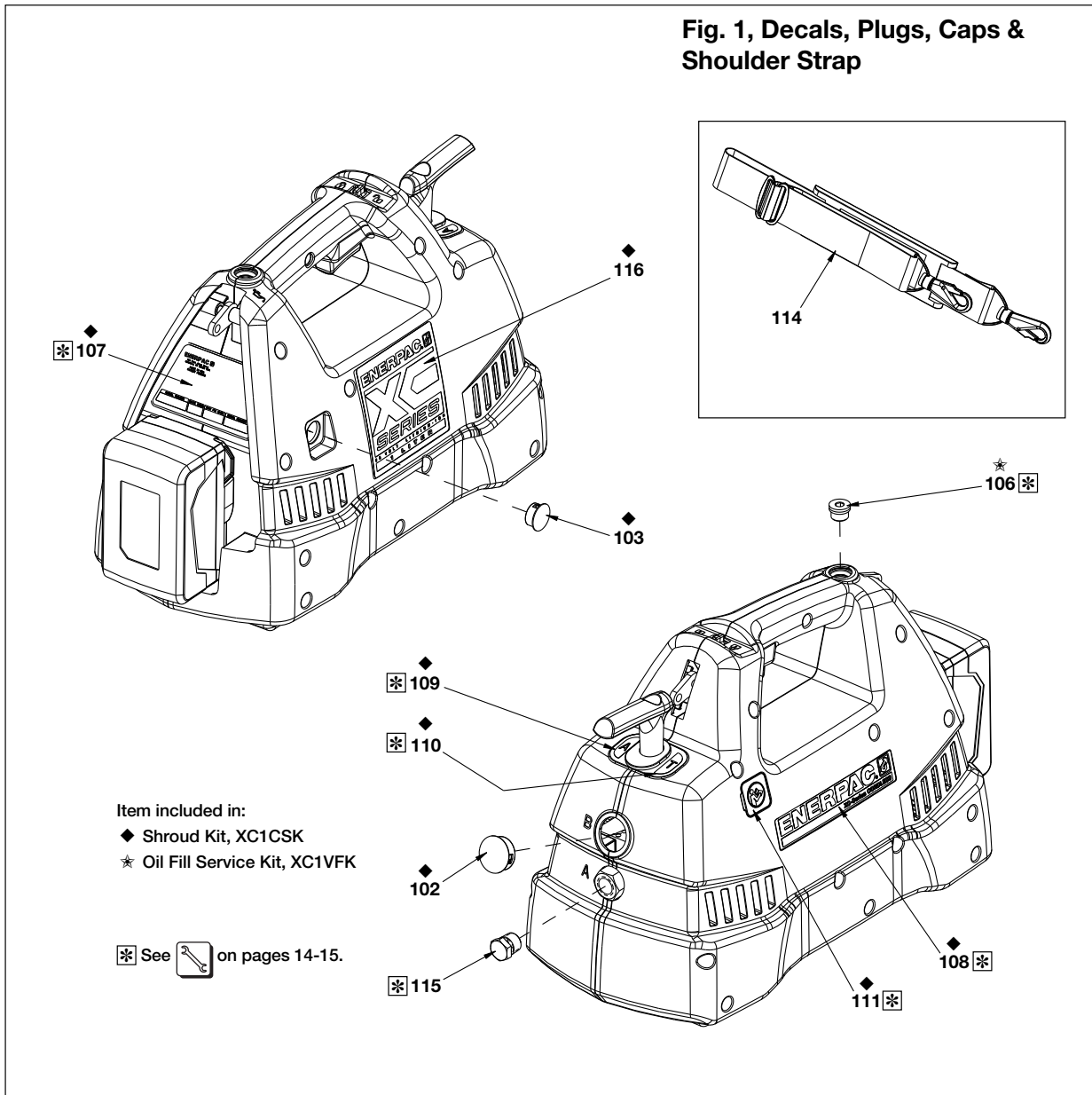
**Table of Contents:**

	Page		Page
Figure 1 - Decals, Plugs, Caps & Shoulder Strap . . .	2	Figure 8 - Eccentric Shaft & Housing Subassembly . . .	9
Figure 2 - Pump Shroud & Hardware . . . . .	3	Figure 9 - Eccentric Shaft Subassembly . . . . .	10
Figure 3 - Pump Shroud & Electrical Components . . . .	4-5	Figure 10 - Pump Assembly . . . . .	10
Figure 4 - Oil Fill & Vent Lines . . . . .	6	Figure 11 - Pump Element. . . . .	11
Figure 5 - Power Unit Assembly . . . . .	7	Figure 12 - Battery & Charger . . . . .	12
Figure 6 - Release Valve & Eccentric Assembly . . . . .	8	Figure 13 - Electrical Schematic . . . . .	13
Figure 7 - Release Valve Subassembly . . . . .	9	Service Information . . . . .	14-15



**WARNING:** Remove battery and disconnect hydraulic hoses before beginning any maintenance or repairs. Standard safety procedures are to be followed during disassembly and reassembly to minimize any possibility of injury.

**Fig. 1, Decals, Plugs, Caps & Shoulder Strap**



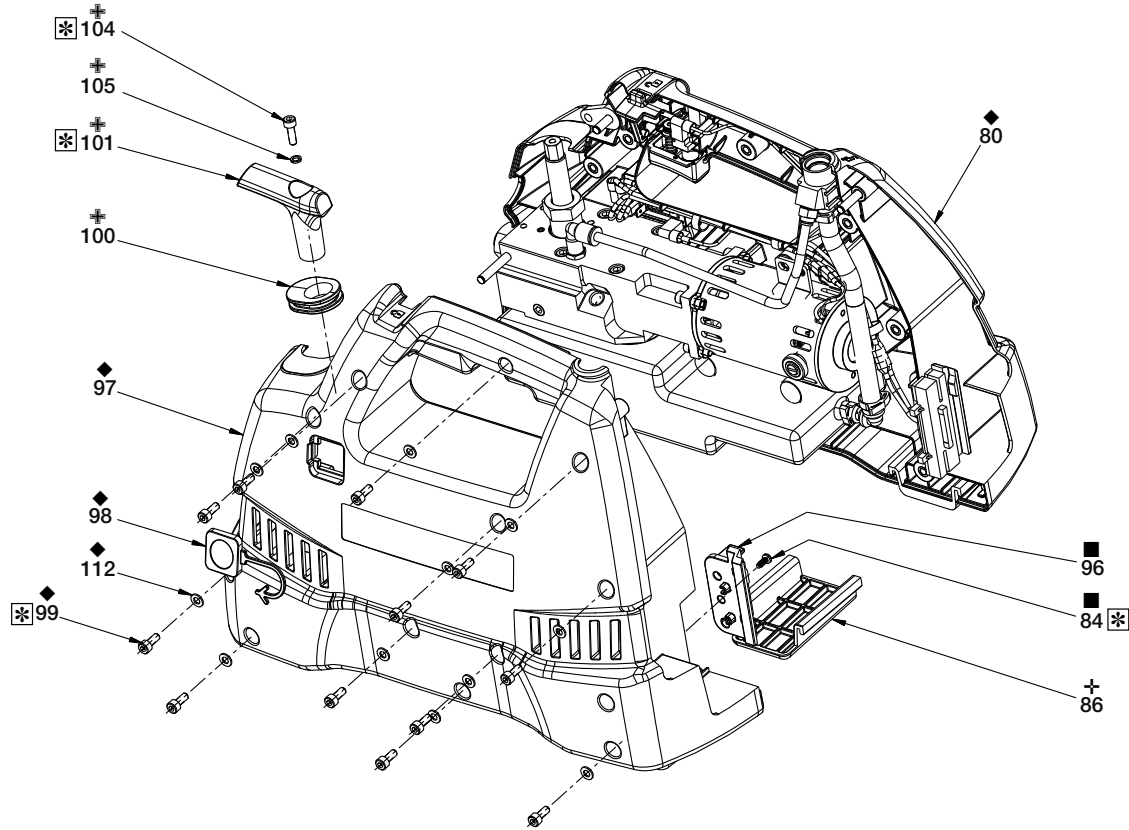
**Repair Parts List, Fig. 1**

**L4006**

Item	Part Number	Qty.	Description	Item	Part Number	Qty.	Description
102	◆ DD4112009	1	Plug, 28 mm	110	◆ DD3938026	1	Decal, "T", XC Pump
103	◆ DD4110009	1	Dome Plug, 19 mm	111	◆ DC7887026	1	Label, Read Instructions
106	★ DD3948006	1	Plug, SAE #6 Int. Hex.	114	DD3418528	1	Strap, Shoulder
107	◆ DD3410026	1	Decal, Product Spec XC	115	R515245-2	1	Plug
108	◆ DD3409026	1	Decal, Enerpac XC	116	◆ DD4023026	1	Decal, XC Classic 1L
109	◆ DD3937026	1	Decal, "A", XC Pump		◆ DD4241026	1	Decal, XC Classic 2L

**IMPORTANT:** Shaded items are available only in kits (not sold separately).

**Fig. 2, Pump Shroud & Hardware**



Item included in:

- ◆ Shroud Kit, XC1CSK
- + Rubber Foot Kit, XC1FK
- Battery Guide Kit, XC1BGK
- ⊕ Handle Kit, XC1VHK

⊛ See  on pages 14-15.

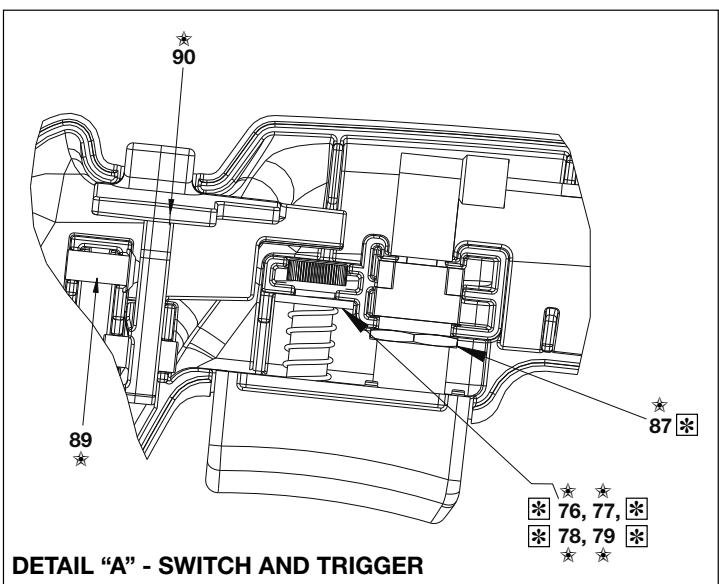
**Repair Parts List, Fig. 2**


**L4006**

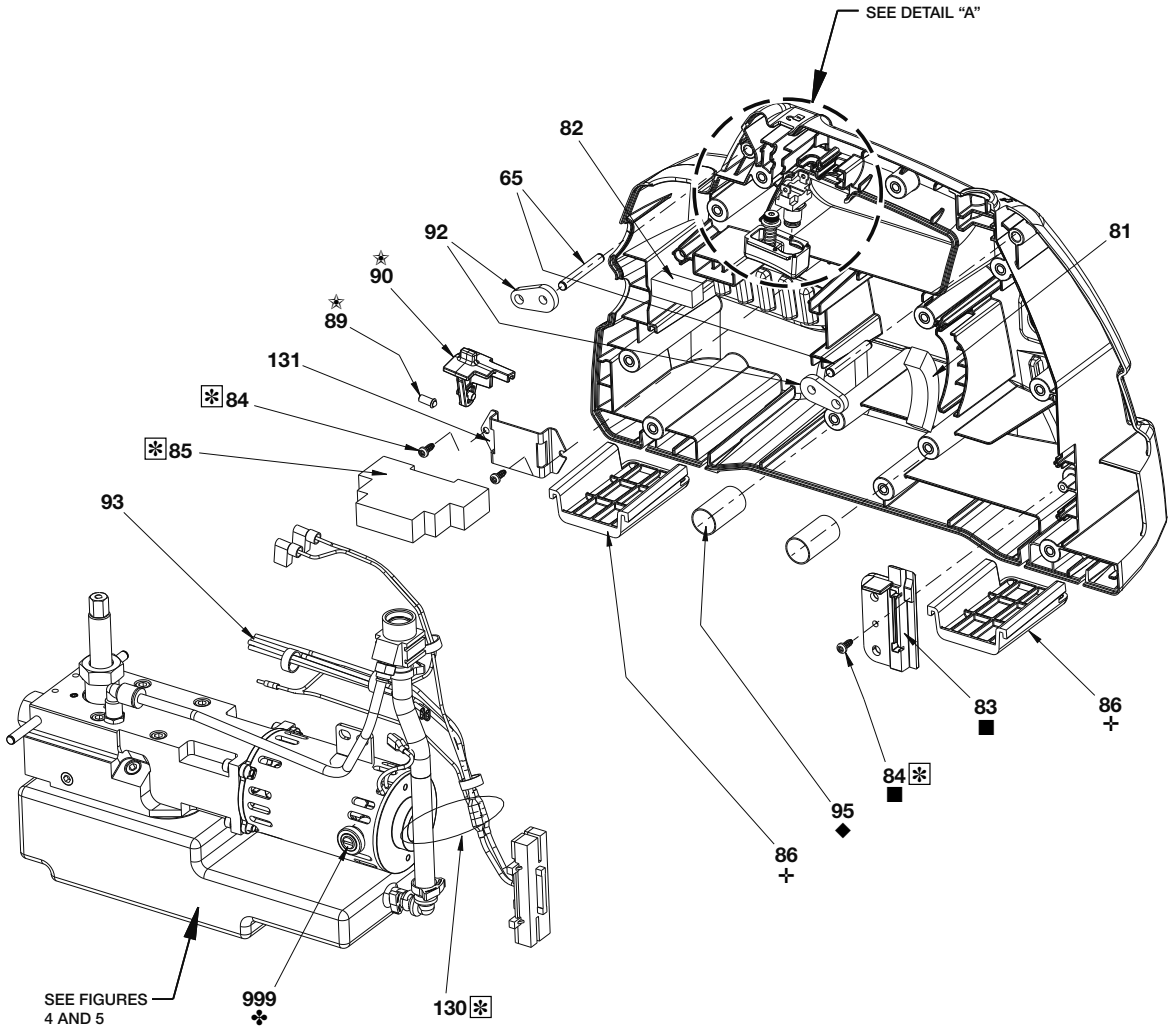
Item	Part Number	Qty.	Description	Item	Part Number	Qty.	Description
80	◆ DD3406424	1	Shroud, RH	99	◆ CBE517028-1A	12	SHCS, M5 x 12 Zinc
84	■ DD3883028	1	Screw, M4 x 10 TRX	100	⊕ DD3888808	1	Grommet, Valve
86	+ DD3414339	2	Foot, Rubber	101	⊕ DD3398070	1	Handle
96	■ DD3420101	1	Battery Plate, LH	104	⊕ CBE519028-1A	1	Screw
97	◆ DD3405424	1	Shroud, LH	105	⊕ B1086066	1	Washer
98	◆ DD3408098	1	Cap, UARV	112	◆ CAE1050108-1A	12	Washer

**IMPORTANT:** Shaded items are available only in kits (not sold separately).

**Fig. 3, Pump Shroud & Electrical Components**



- Item included in:
- + Rubber Foot Kit, XC1FK
  - ★ Trigger Assembly, XC1TRK
  - ◆ Shroud Kit, XC1CSK
  - Battery Guide Kit, XC1BGK
  - ❖ Motor Brush Kit, XC1MBK
- ☒ See  on pages 14-15.



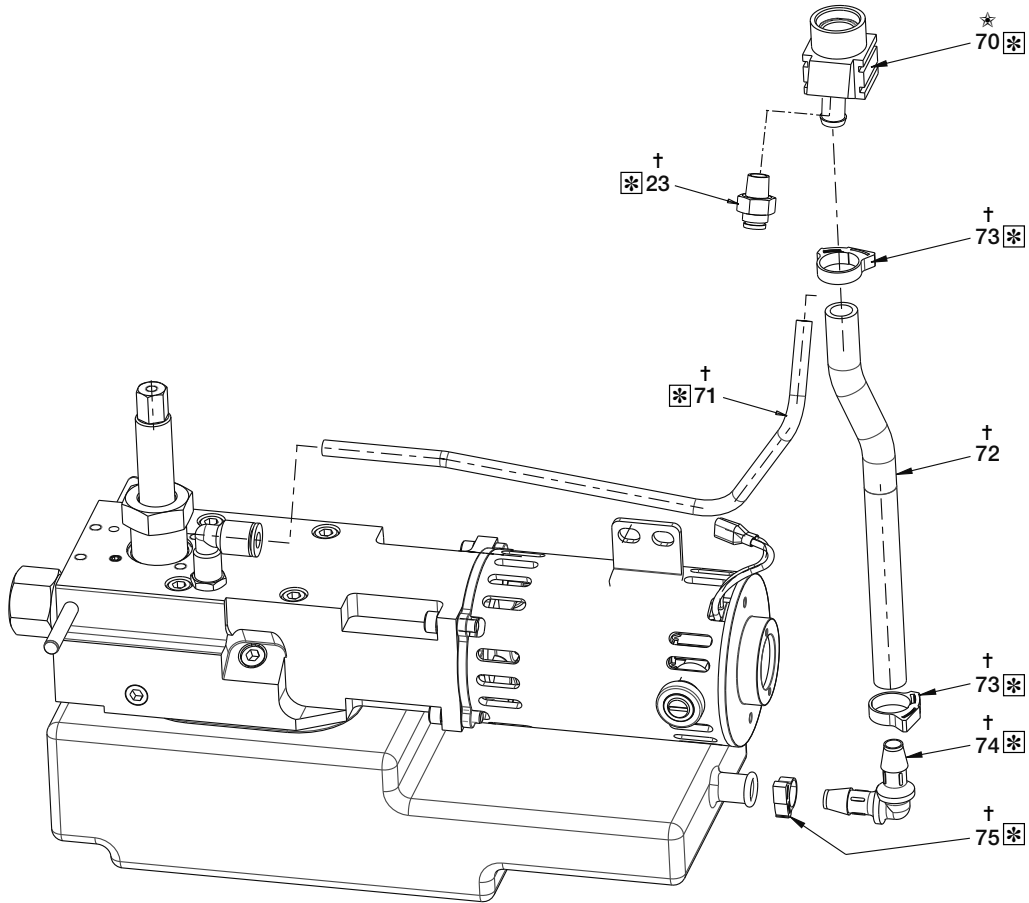
Repair Parts List, Fig. 3			L4006
Item	Part Number	Qty.	Description
65	DD3417059	2	Pin, 6 mm x 45 mm Long
76	★ DD4114098	1	Cover, Trigger Switch (with insert)
77	★ DD3407110	1	Spring, Trigger
78	★ B1088108	1	Washer
79	★ DD4109028	1	Screw, Shoulder, 0.25 dia.
81	DD4113339	2	Bumper, Motor Isolator (one per shroud)
82	DD3887339	2	Bumper, Pump Isolator (one per shroud)
83	■ DD3426101	1	Guide, RH Battery Lock
84	■ DD3883028	1	Screw (secures item 83 to RH shroud)
84	DD3883028	2	Screw (secures item 131 to RH shroud)
85	DD3350380	1	Contact, 24V
86	+ DD3414339	2	Foot, Slide
87	★ DD3423379	1	Switch, On-Off, Momentary
89	★ DD3421013	1	Safety Detent
90	★ DD2998098	1	Safety Switch
92	DD3884101	2	Tab, Strap Mount
93	DD3422960	1	Wire Harness
95	◆ DD3886268	2	Sleeve
130	DC9876647	1	Cable Tie, 6"
131	DD4352101	1	Plate, Relay Mount
999	✦ Order Kit XC1MBK	1	Motor Brush Kit (each kit includes two brushes and two brush caps)
<b>IMPORTANT: Shaded items are available only in kits (not sold separately).</b>			

**Fig. 4, Oil Fill & Vent Lines**

Item included in:

- † Oil Fill Tubing Kit, XC1TK
- ★ Oil Fill Service Kit, XC1VFK

✱ See  on pages 14-15.



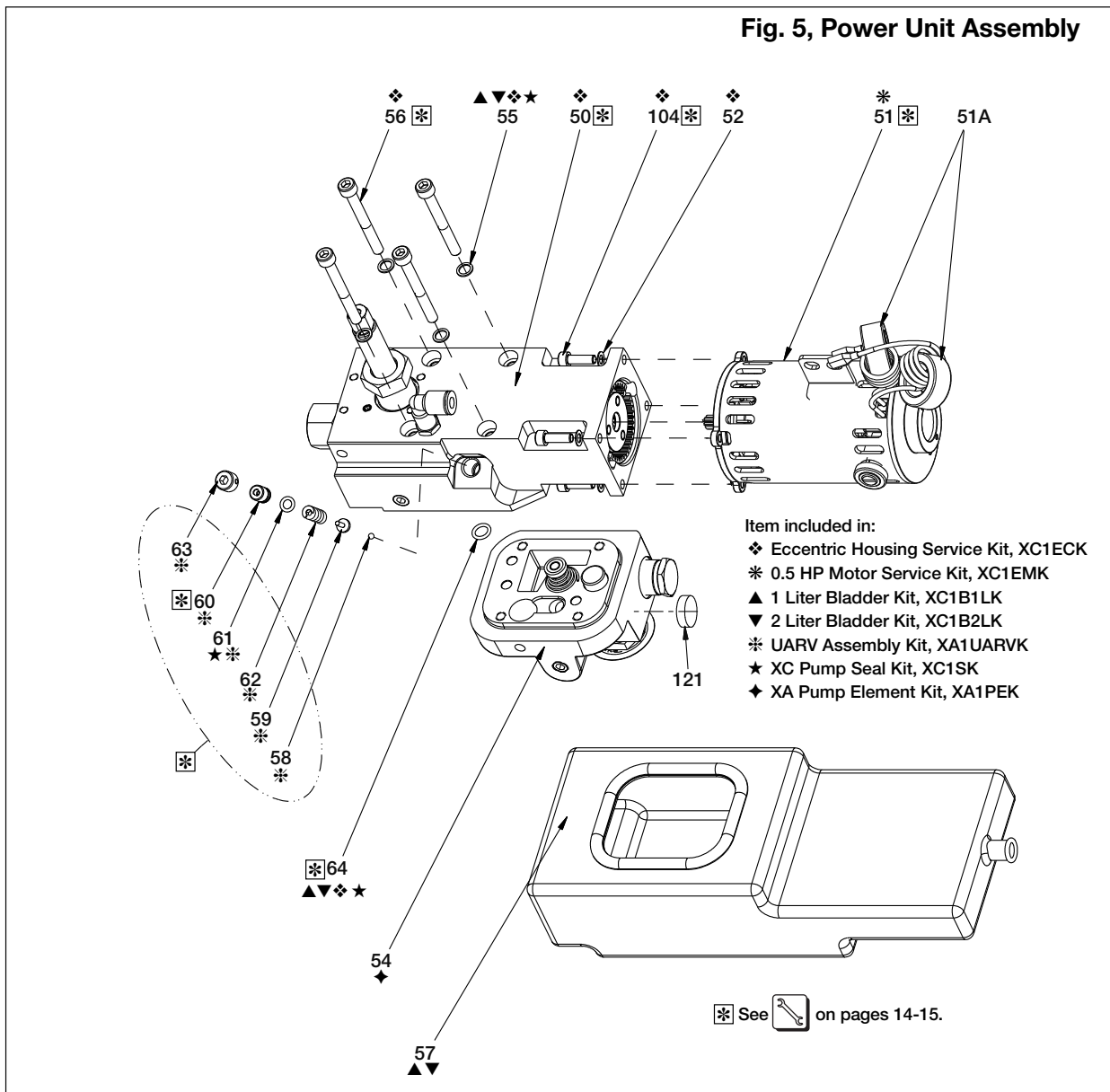
**Repair Parts List, Fig. 4**

**L4006**

Item	Part Number	Qty.	Description	Item	Part Number	Qty.	Description
23	† F100097-33	1	Fitting	73	† DD4118017	2	Clip, Oil Fill, Reusable
70	★ DD3403900	1	Fill Assembly, Vented	74	† DD3416097	1	Elbow, Barbed 0.38"
71	† DD4108646	1	Tube, Oil Vent	75	† DD3885017	1	Clip, Reusable 0.38"
72	† DD3415646	1	Tube, Oil Fill				

**IMPORTANT:** Shaded items are available only in kits (not sold separately).

**Fig. 5, Power Unit Assembly**



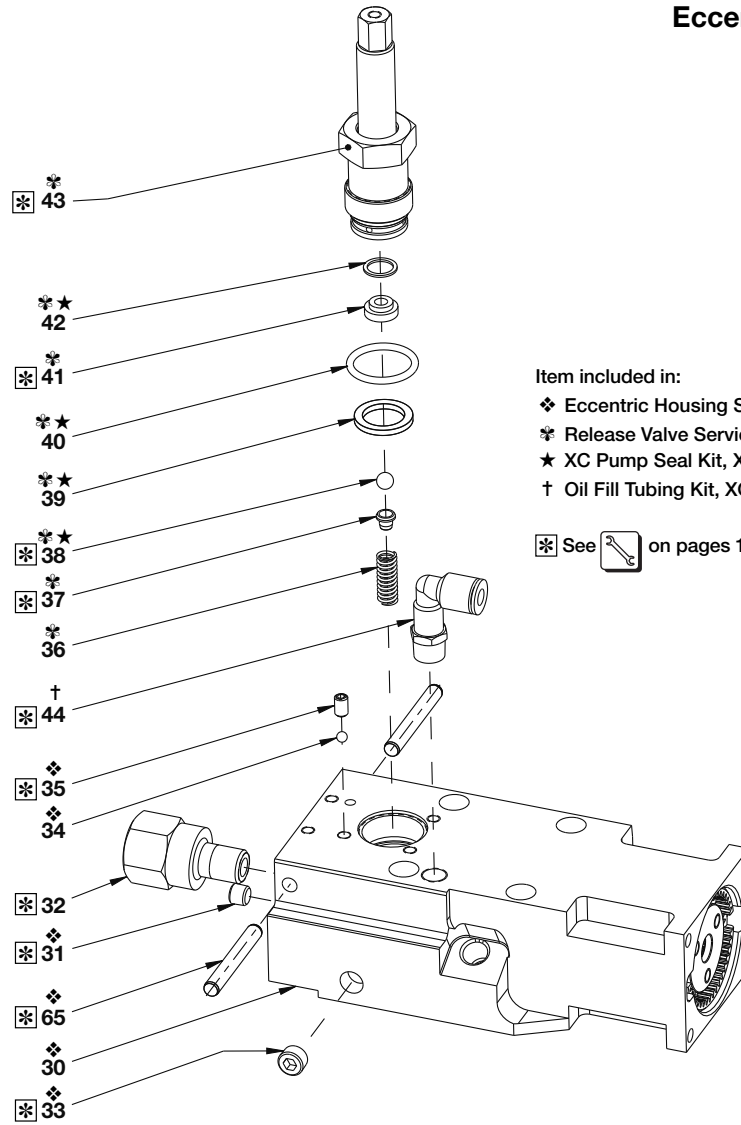
**Repair Parts List, Fig. 5**

**L4006**

Item	Part Number	Qty.	Description	Item	Part Number	Qty.	Description
50	(See Fig. 6)	1	(not sold as subassembly)	58	* B1003016	1	Ball, 1/8" Diameter
51	* DD2993259	1	Motor, PMDC 28VDC	59	* A8038570	1	Ball Cap
51A	DD4406380	1	Cores (included with 51)	60	* DC7234009	1	Plug
52	◇ CCE1050108-6A	4	Lock Washer	61	*★ B1004503	1	O-Ring
54	◆ (See Fig 11)	1	Pump Element	62	* A8126110	1	Spring, Coil, 2000 lbs.
55	▲▼◇★ S3037	4	Gasket	63	* DC10131048	1	Set Screw, Cup Pt. Nylok
56	◇ CCA635028-1A	4	Screw, SHCS M6 x 55	64	▲▼◇★ B1011803	1	O-Ring
57	▲ DD2995025	1	Bladder, 1 Liter	104	◇ CBE519028--1A	4	Capscrew
	▼ DD2991025	1	Bladder, 2 Liter	121	C187018	1	Magnet

**IMPORTANT:** Shaded items are available only in kits (not sold separately).

**Fig. 6, Release Valve & Eccentric Assembly**



**Repair Parts List, Fig. 6**

**L4006**

Item	Part Number	Qty.	Description	Item	Part Number	Qty.	Description
30	❖ (See Fig. 8)	1	Eccentric and Housing	38	✳★ B1007016	1	Ball, 1/4" Dia.
31	❖ DC6792245	1	Plug, Flush NPTF .062	39	✳★ CL344167	1	Gasket
32	FZ1055	1	Adapter	40	✳★ B1118903	1	O-Ring
33	❖ DC6793245	1	Plug, Flush NPTF .125	41	✳ DC7305290	1	Seat
34	❖ B1004016	1	Ball, 5/32" Dia.	42	✳★ P20037	1	Gasket
35	❖ CCA513028-5A	1	Screw, M5 x8mm Flat Pt.	43	✳ (See Fig. 7)	1	Release Valve Subass'y
36	✳ DC10140110	1	Spring, Compression	44	† F100097-52	1	Elbow
37	✳ DC7309013	1	Ball Guide	65	❖ DD3417059	2	Pin, 6mm x 45mm Long

**IMPORTANT:** Shaded items are available only in kits (not sold separately).

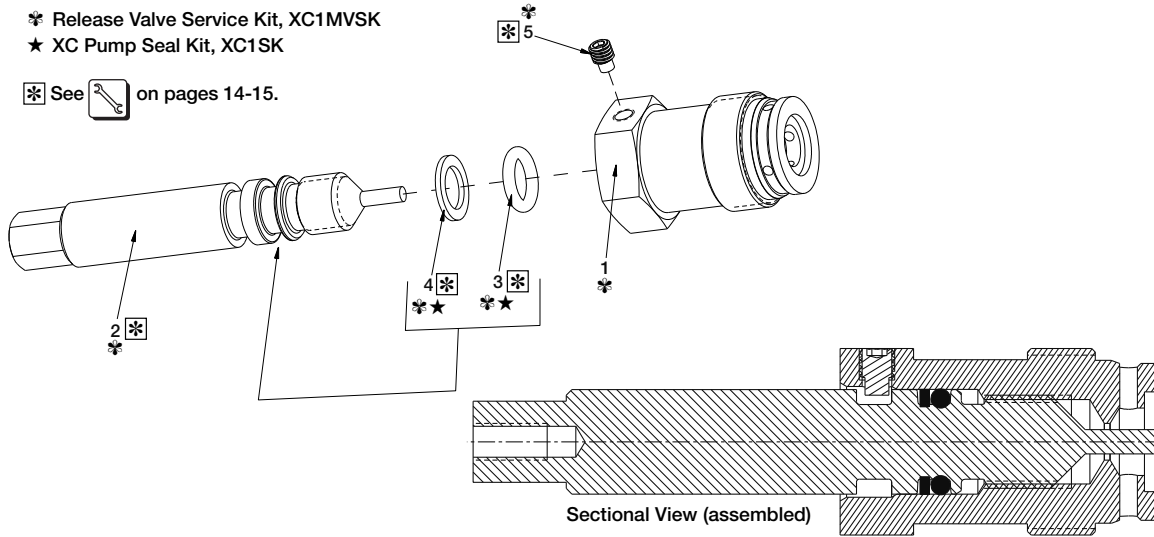


**Fig. 7, Release Valve Subassembly**

Item included in:

- \* Release Valve Service Kit, XC1MVSK
- ★ XC Pump Seal Kit, XC1SK

\* See  on pages 14-15.



**Repair Parts List, Fig. 7**

**L4006**

Item	Part Number	Qty.	Description	Item	Part Number	Qty.	Description
1	* DD2988013	1	Body, Release Valve	4	*★ B1110564	1	Back-Up, Teflon
2	* DD2992010	1	Spindle, Release Valve	5	* DD3400027	1	Set Screw
3	*★ B1110203	1	O-Ring, Viton				

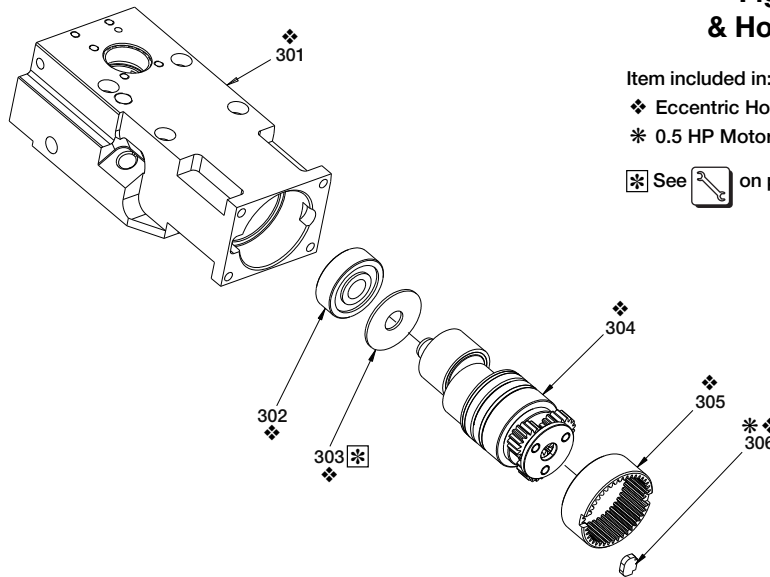
**IMPORTANT:** Shaded items are available only in kits (not sold separately).

**Fig. 8, Eccentric Shaft & Housing Subassembly**

Item included in:

- ❖ Eccentric Housing Service Kit, XC1ECK
- \* 0.5 HP Motor Service Kit, XC1EMK

\* See  on pages 14-15.



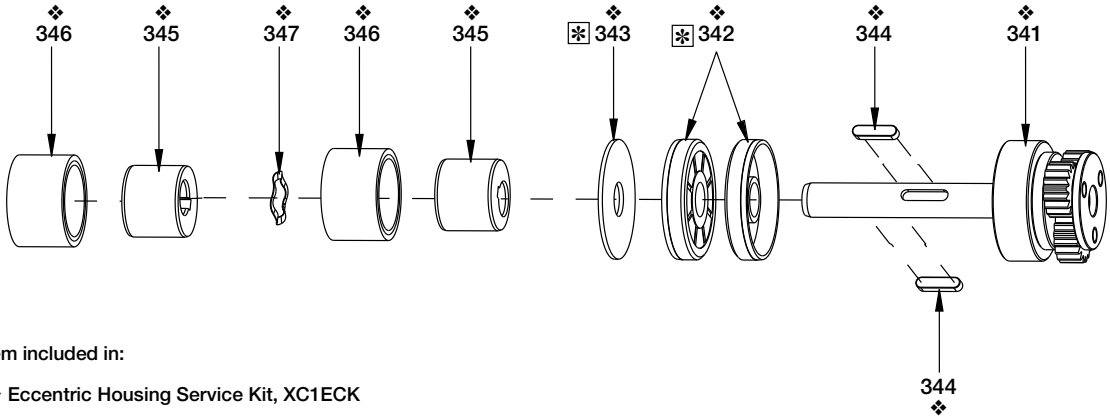
**Repair Parts List, Fig. 8**

**L4006**


Item	Part Number	Qty.	Description	Item	Part Number	Qty.	Description
301	❖ DD2989001	1	Housing, Eccentric	304	❖ (See Fig. 9)	1	Assy, Eccentric Shaft
302	❖ DC7096155	1	Bearing	305	❖ DC7089228	1	Inner Gear
303	❖ DC7464108	1	Bushing 12 x 37 x 1.5	306	*❖ DC7452251	1	Key, Gear Ring

**IMPORTANT:** Shaded items are available only in kits (not sold separately).

**Fig. 9, Eccentric Shaft Subassembly**



Item included in:  
 ♦ Eccentric Housing Service Kit, XC1ECK

✱ See  on pages 14-15.

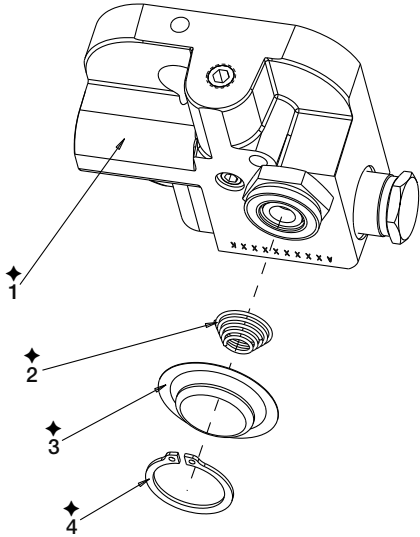
**Repair Parts List, Fig. 9**

**L4006**

Item	Part Number	Qty.	Description	Item	Part Number	Qty.	Description
341	♦ DC7870950	1	S/A, Eccentric Shaft	345	♦ DC7117537	2	Eccentric
342	♦ DC7090476	2	Lip Seal	346	♦ DC7755950	2	Subassembly, Cam
343	♦ DC7186108	1	Washer, Thrust	347	♦ DC7750410	1	Spring, Wave
344	♦ DC7191251	2	Key				

**IMPORTANT:** Shaded items are available only in kits (not sold separately).

**Fig. 10, Pump Assembly**



Item included in:  
 ♦ XA Pump Element Kit, XA1PEK

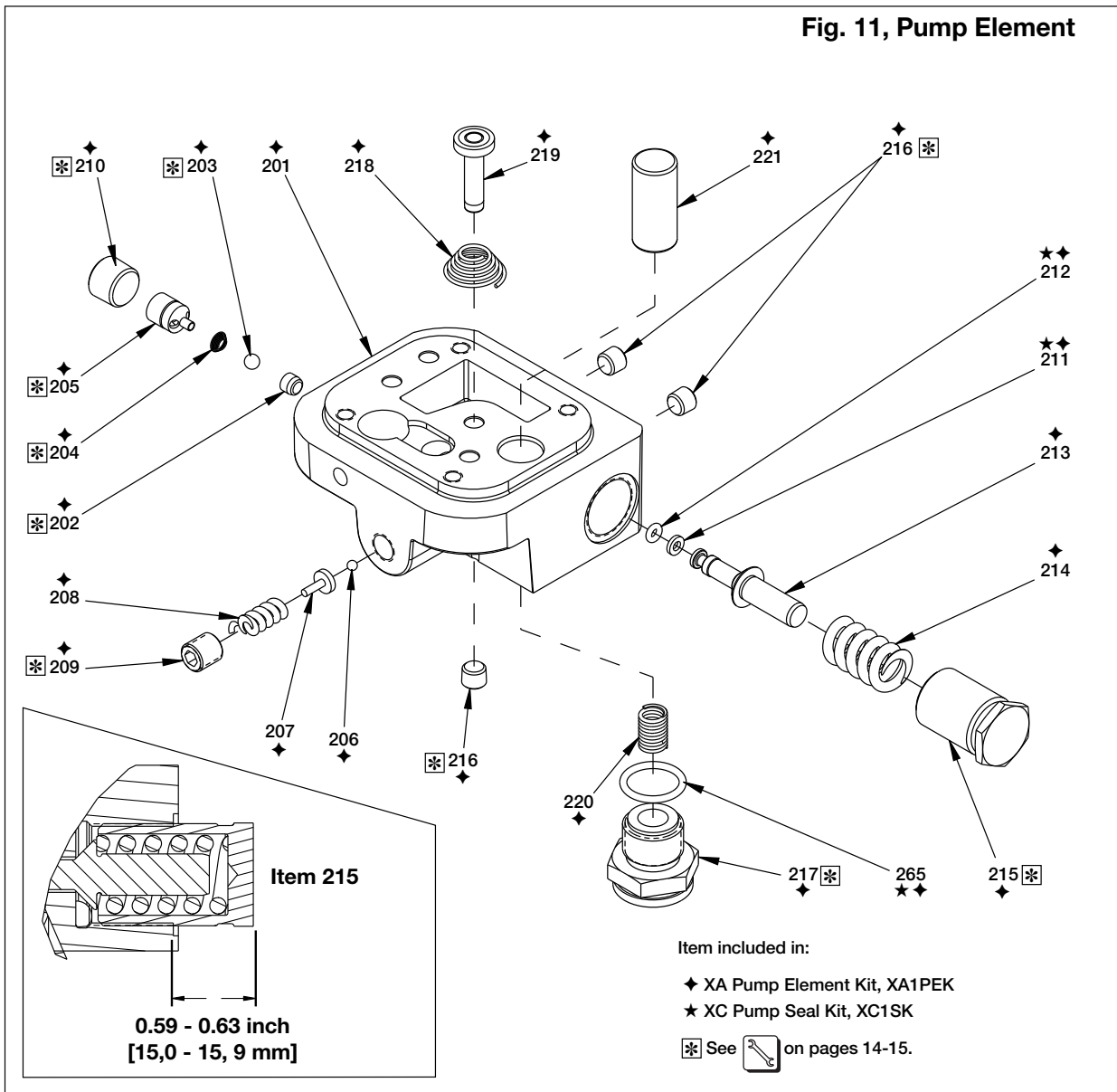
**Repair Parts List, Fig. 10**

**L4006**

Item	Part Number	Qty.	Description
1	♦ DC7206950	1	Assy, Pump Element (See Fig. 11)
2	♦ BSS5509D	1	Spring
3	♦ DC7152018	1	Screen
4	♦ CCA1025044-1A	1	Ring, Retaining

**IMPORTANT:** Shaded items are available only in kits (not sold separately).

**Fig. 11, Pump Element**



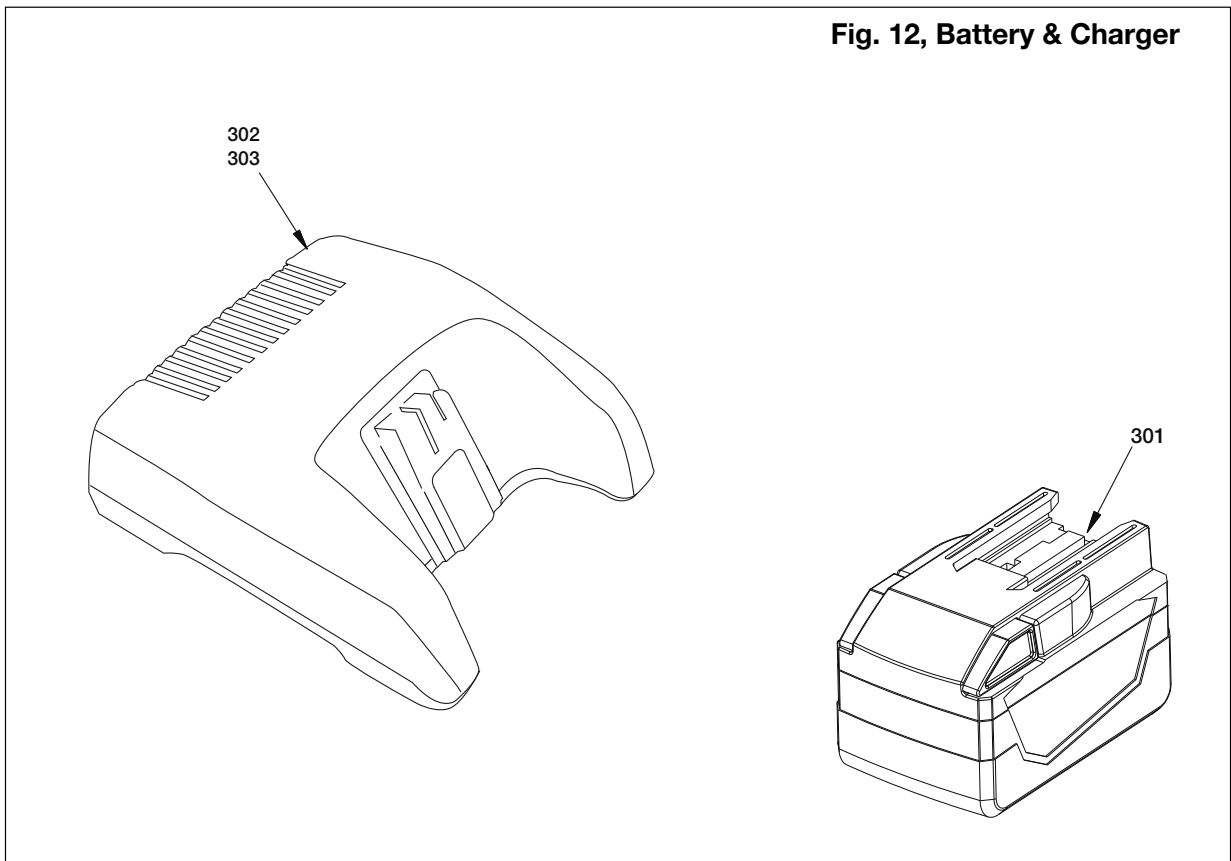
**Repair Parts List, Fig. 11**

**L4006**

Item	Part Number	Qty.	Description	Item	Part Number	Qty.	Description
201	◆ DC7201190	1	Body, Pump	212	★ ◆ B1006803	1	O-Ring, 0.25" O.D.
202	◆ BSS5358D	1	Ball Seat, Inlet	213	◆ DC9292051	1	Piston, Bypass
203	◆ B1005016	1	Ball, 3/16" Dia.	214	◆ DC394110	1	Spring, Bypass
204	◆ BSS5809D	1	Spring	215	◆ DC9208020	1	End Cap, Bypass
205	◆ DC7904900	1	Assy, Outlet Check	216	◆ A1006245	3	Plug, Flush 1/16"
206	◆ B1003016	1	Ball, 1/8" Dia	217	◆ DC7453950	1	Assembly, Inlet Check
207	◆ A8038570	1	Ball Cap	218	◆ BSS5509D	1	Spring, Conical
208	◆ A8126110	1	Spring	219	◆ DC9244920	1	Piston, 6 mm Dia
209	◆ DC1185048	1	Soc. Hd. Set Scw., Hollow	220	◆ DC7026110	1	Spring, Large Piston
210	◆ DC6794245	1	Plug, NPTF 1/4"	221	◆ DC7027051	1	Piston, 14 mm Dia
211	★ ◆ B1006564	1	Washer, B/U	265	★ ◆ B1908503	1	O-Ring

**IMPORTANT:** Shaded items are available only in kits (not sold separately).

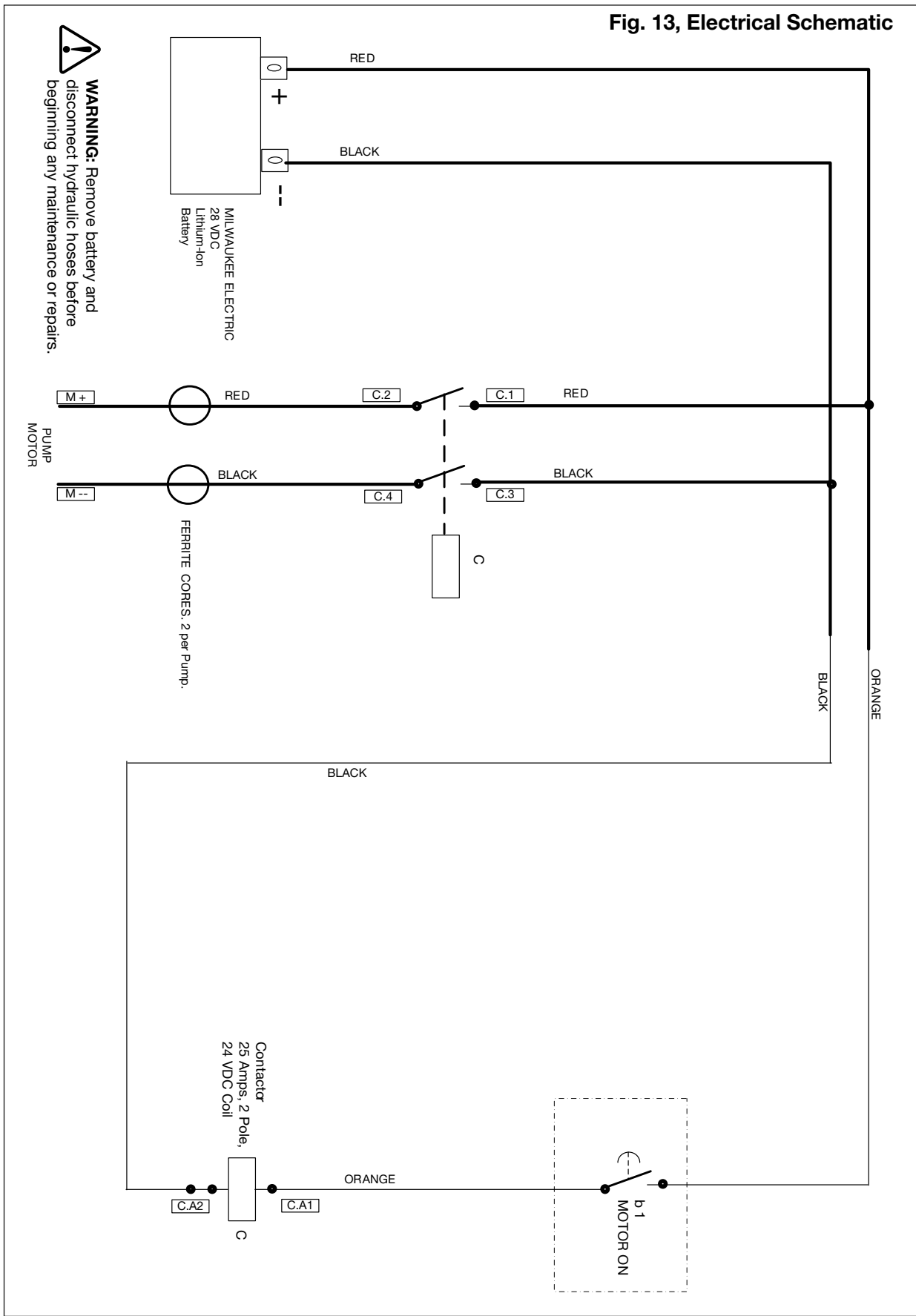
**Fig. 12, Battery & Charger**



Repair Parts List, Fig. 13				L4006
Item	Part Number	Qty.	Description	
301	XC28V	1	Battery, 28 Volt Li-Ion	
302	XC115VC	1	Battery Charger, 115 VAC input	
303	XC230VC	1	Battery Charger, 230 VAC input	

**Note:** "M28™" and the Milwaukee Electric Tool logo are trademarks and intellectual property of Milwaukee Electric Tool Corporation. Exact appearance of battery and charger may vary.

Fig. 13, Electrical Schematic





❖ Service Information		L4006
Fig.	Item	Torque / notes
1	106	4,5 - 5,7 Nm [40 - 50 In - Lbs.]
1	107	Apply self adhesive label. Locate as shown.
1	108	Apply self adhesive label. Locate as shown.
1	109	Apply self adhesive label. Locate as shown.
1	110	Apply self adhesive label. Locate as shown.
1	111	Apply self adhesive label. Locate as shown.
1	115	13,6 - 16,3 Nm [10 - 12 Ft - Lbs]
1	115	When loosening plug (Fig. 1, item 115), use a second wrench to prevent adapter fitting (Fig. 6, item 32) from turning.
2	84	0,9 - 1,1 Nm [8 - 10 In - Lbs]
2	99	2 - 3 Nm [18 - 26 In - Lbs]
2	101	Before installing handle, rotate valve clockwise until it stops.
2	104	Apply Loctite 243.
2	104	2 - 3 Nm [18 - 26 In - Lbs]
3	76, 77, 78 & 79 and Detail A	Assemble washer and spring below tab in housing.
3	84	0,9 - 1,1 Nm [8 - 10 In - Lbs]
3	85	Orient as shown.
3	87	Install switch mounting nut finger tight on shroud rib, then remove and screw nut on 1/2 turn. Reinstall.
3	130	Secure cables with wire ties.
4	23	Torque to 4,0 - 5,6 Nm [36 - 50 In - Lbs]
4	70	Apply grease as required when assembling tubes to fitting.
4	71	Push to connect.
4	73	Squeeze until tight.
4	74	Apply grease as required when assembling tube to fitting.
4	75	Squeeze until tight.
5	50, 51	Apply grease to ring gear teeth before installing motor.
5	51	Orient with tab UP.
5	51A	Ferrite cores (item 51A) are included with motor (item 50).
5	104	Apply Loctite 243.
5	104	5,3 - 7,6 Nm [45 - 60 In - Lbs]
5	56	Apply Loctite 2760.
5	56	17,0 - 20,5 Nm [12 - 15 Ft - Lbs]
5	58 - 63	Install last - after pump, bladder and motor.
5	60	Plug includes M4 tapped hole. Remove using M4 screw.
5	64	Install on eccentric housing.

(Continued on next page)



* Service Information (Continued)		L4006
Fig.	Item	Torque / notes
6	31	Apply Teflon tape to threads.
6	31	13,5 - 16,3 Nm [10 - 12 Ft - Lbs]
6	32	Apply Teflon tape to threads.
6	32	43 - 53 Nm [32 - 39 Ft - Lbs]
6	33	Apply Teflon tape to threads.
6	33	22,0 - 25,0 Nm [16 - 19 Ft - Lbs]
6	35	Apply Loctite 243.
6	35	4,1 - 6,8 Nm [36 - 60 In - Lbs]
6	37	Apply grease to aid assembly.
6	38, 41	Coin seat before installation.
6	43	Apply Loctite 243.
6	43	122,0 -128,8 Nm [90 - 95 Ft - Lbs] (valve body)
6	44	Apply Teflon tape to threads.
6	44	4,1 - 6,8 Nm [30 - 60 In - Lbs]
6	65	Press fit.
7	2	Turn counter-clockwise to assemble. Turn-in until groove is seen in body through hole.
7	3, 4	Apply grease to O-Ring and back-up after assembly to spindle, before assembly to body.
7	5	Apply Loctite 243.
7	5	2,4 - 3,0 Nm [21 - 26 In - Lbs]
8	303	Position gray coated side of bushing (item #303) toward eccentric (item #304).
9	342, 343	Position gray coated side of thrust washer (item 343) toward eccentric (item 345).
11	202, 203 204, 205	Outlet check valve components are permanently installed in valve body. These components. cannot be removed.
11	209	Set safety relief valve pressure to 711 - 737 Bar [10300 - 10700 Psi].
11	210	Apply Teflon tape to threads.
11	210	60 - 71 Nm [44.2 - 52.3 Ft - Lbs]
11	215	Bypass setting end cap dimension: 15,0 - 15,9 mm [0.59 - 0.63 inch] (measured from counterbore to edge of cap)
11	216	Apply Teflon tape to threads.
11	216	13 - 16 Nm [9.8 - 11.8 Ft - Lbs]
11	217	25 - 30 Nm [18.4 - 22.1 Ft - Lbs]

**Enerpac Worldwide Locations**✦ **e-mail:** [info@enerpac.com](mailto:info@enerpac.com)✦ **internet:** [www.enerpac.com](http://www.enerpac.com)**Australia and New Zealand**

Actuant Australia Ltd.  
Block V Unit 3  
Regents Park Estate  
391 Park Road  
Regents Park NSW 2143  
(P.O. Box 261) Australia  
T +61 (0)2 9743 8988  
F +61 (0)2 9743 8648  
[sales-au@enerpac.com](mailto:sales-au@enerpac.com)

**Brazil**

Power Packer do Brasil Ltda.  
Rua dos Inocentes, 587  
04764-050 - Sao Paulo (SP)  
T +55 11 5687 2211  
F +55 11 5686 5583  
Toll Free: 0800 891 5770  
[vendasbrasil@enerpac.com](mailto:vendasbrasil@enerpac.com)

**Canada**

Actuant Canada Corporation  
6615 Ordan Drive, Unit 14-15  
Mississauga, Ontario L5T 1X2  
T +1 905 564 5749  
F +1 905 564 0305  
Toll Free:  
T +1 800 268 4987  
F +1 800 461 2456  
[customer.service@actuant.com](mailto:customer.service@actuant.com)

**China**

Actuant (China) Industries Co. Ltd.  
No. 6 Nanjing East Road,  
Taicang Economic Dep Zone  
Jiangsu, China  
T +86 0512 5328 7500  
F +86 0512 5335 9690  
Toll Free: +86 400 885 0369  
[sales-cn@enerpac.com](mailto:sales-cn@enerpac.com)

**France, Switzerland, North Africa and French speaking African countries**

ENERPAC  
Une division d'ACTUANT France S.A.  
ZA de Courtaboeuf  
32, avenue de la Baltique  
91140 VILLEBON /YVETTE  
France  
T +33 1 60 13 68 68  
F +33 1 69 20 37 50  
[sales-fr@enerpac.com](mailto:sales-fr@enerpac.com)

**Germany and Austria**

ENERPAC GmbH  
P.O. Box 300113  
D-40401 Düsseldorf  
Willstätterstrasse 13  
D-40549 Düsseldorf, Germany  
T +49 211 471 490  
F +49 211 471 49 28  
[sales-de@enerpac.com](mailto:sales-de@enerpac.com)

**India**

ENERPAC Hydraulics Pvt. Ltd.  
No. 1A, Peenya Industrial Area  
IInd Phase, Bangalore, 560 058, India  
T +91 80 40 792 777  
F +91 80 40 792 792  
[sales-in@enerpac.com](mailto:sales-in@enerpac.com)

**Italy**

ENERPAC S.p.A.  
Via Canova 4  
20094 Corsico (Milano)  
T +39 02 4861 111  
F +39 02 4860 1288  
[sales-it@enerpac.com](mailto:sales-it@enerpac.com)

**Japan**

Applied Power Japan LTD KK  
Besshocho 85-7  
Kita-ku, Saitama-shi 331-0821, Japan  
T +81 48 662 4911  
F +81 48 662 4955  
[sales-jp@enerpac.com](mailto:sales-jp@enerpac.com)

**Middle East, Egypt and Libya**

ENERPAC Middle East FZE  
Office 423, LOB 15  
P.O. Box 18004, Jebel Ali, Dubai  
United Arab Emirates  
T +971 (0)4 8872686  
F +971 (0)4 8872687  
[sales-ua@enerpac.com](mailto:sales-ua@enerpac.com)

**Russia**

Rep. office Enerpac  
Russian Federation  
Admiral Makarova Street 8  
125212 Moscow, Russia  
T +7 495 98090 91  
F +7 495 98090 92  
[sales-ru@enerpac.com](mailto:sales-ru@enerpac.com)

**Southeast Asia, Hong Kong and Taiwan**

Actuant Asia Pte Ltd.  
83 Joo Koon Circle  
Singapore 629109  
T +65 68 63 0611  
F +65 64 84 5669 7722  
Toll Free: +1800 363  
[sales-sg@enerpac.com](mailto:sales-sg@enerpac.com)

**South Korea**

Actuant Korea Ltd.  
3Ba 717, Shihwa Industrial Complex  
Jungwang-Dong, Shihung-Shi,  
Kyunggi-Do  
Republic of Korea 429-450  
T +82 31 434 4506  
F +82 31 434 4507  
[sales-kr@enerpac.com](mailto:sales-kr@enerpac.com)

**Spain and Portugal**

ENERPAC SPAIN, S.L.  
Avda. Los Frailes, 40 - Nave C & D  
Pol. Ind. Los Frailes  
28814 Daganzo de Arriba  
(Madrid) Spain  
T +34 91 884 86 06  
F +34 91 884 86 11  
[sales-es@enerpac.com](mailto:sales-es@enerpac.com)

**Sweden, Denmark, Norway, Finland and Iceland**

Enerpac Scandinavia AB  
Fabriksgatan 7  
412 50 Gothenburg  
Sweden  
T +46 (0) 31 799 0281  
F +46 (0) 31 799 0010  
[scandinavianinquiries@enerpac.com](mailto:scandinavianinquiries@enerpac.com)

**The Netherlands, Belgium, Luxembourg, Central and Eastern Europe, Baltic States, Greece, Turkey and CIS countries**

ENERPAC B.V.  
Galvanistraat 115  
6716 AE Ede  
P.O. Box 8097  
6710 AB Ede  
The Netherlands  
T +31 318 535 911  
F +31 318 535 848  
[sales-nl@enerpac.com](mailto:sales-nl@enerpac.com)

**Enerpac Integrated Solutions B.V.**

Opaalstraat 44  
7554 TS Hengelo  
P.O. Box 421  
7550 AK Hengelo  
The Netherlands  
T +31 74 242 20 45  
F +31 74 243 03 38  
[integratedsolutions@enerpac.com](mailto:integratedsolutions@enerpac.com)

**South Africa and other English speaking African countries**

Enerpac Africa Pty Ltd.  
No. 5 Bauhinia Avenue  
Cambridge Office Park  
Block E  
Highveld Techno Park  
Centurion 0157  
South Africa  
T: +27 12 940 0656

**United Kingdom and Ireland**

ENERPAC Ltd.,  
Bentley Road South  
Darlaston, West Midlands  
WS10 8LQ  
England  
T +44 (0)121 50 50 787  
F +44 (0)121 50 50 799  
[sales-uk@enerpac.com](mailto:sales-uk@enerpac.com)

**USA, Latin America and Caribbean**

ENERPAC  
P.O. Box 3241  
Milwaukee WI 53201 USA  
T +1 262 293 1600  
F +1 262 293 7036  
User inquiries:  
T +1 800 433 2766  
Distributor inquiries/orders:  
T +1 800 558 0530  
F +1 800 628 0490  
Technical inquiries:  
[techservices@enerpac.com](mailto:techservices@enerpac.com)  
[sales-us@enerpac.com](mailto:sales-us@enerpac.com)

All Enerpac products are guaranteed against defects in workmanship and materials for as long as you own them.

For the location of your nearest authorized Enerpac Service Center, visit us at [www.enerpac.com](http://www.enerpac.com)

011613



Visit [www.enerpac.com](http://www.enerpac.com) for the location of the Enerpac Authorized Service Center nearest you.