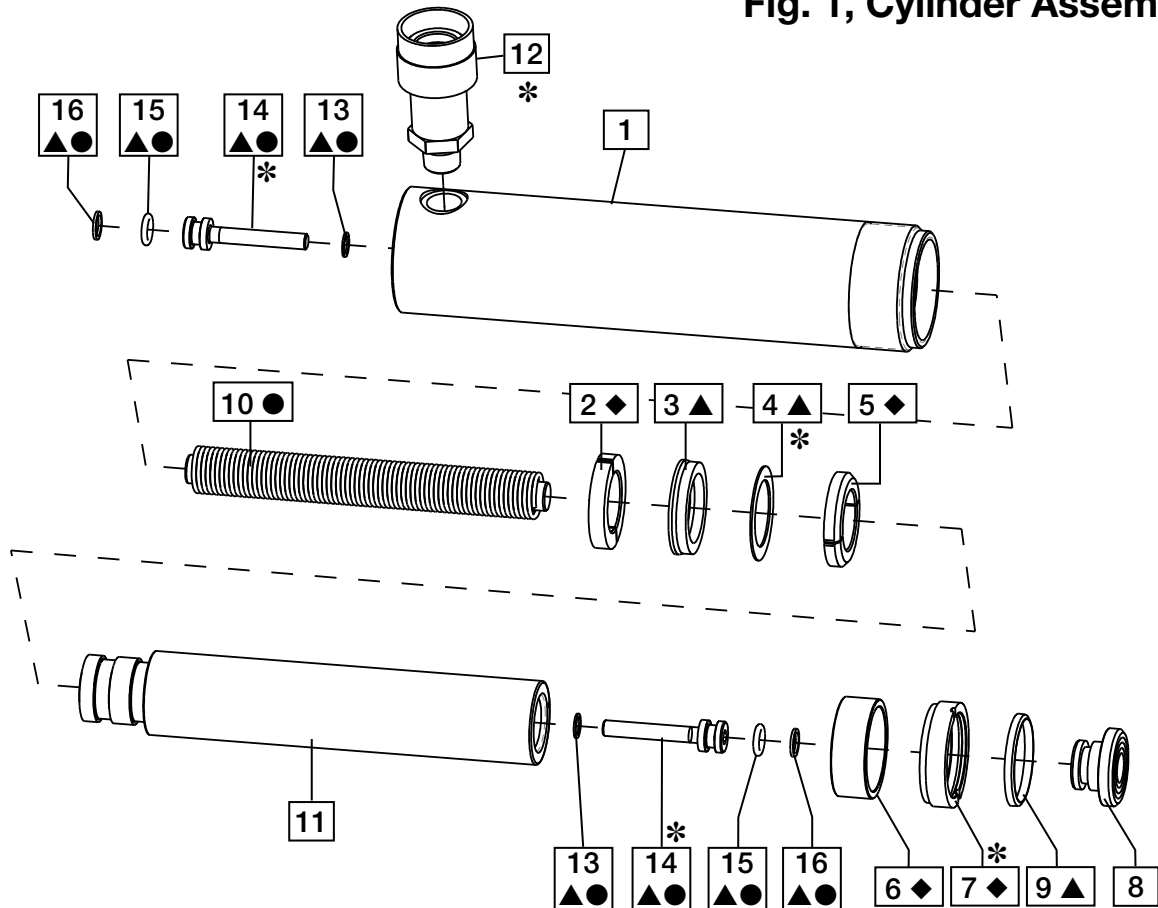


Repair Parts Sheet	Revision	Revision Date	Product Code Beginning
L3032	Rev. D	6/2013	E

Fig. 1, Cylinder Assembly



- ▲ = Standard Repair Kit RC10K52.
- = Spring Kit (varies by cylinder model - see page 2).
- ▲ + ◆ = Premium Repair Kit RC10K72.
- * = See Notes section for additional information.



**Note: See Page 2
for parts list.**

(*) Notes	
Item	Torque / notes
4	Washer to be placed with the sharp edge towards U-Cup.
7	7.9 - 10.2 Nm, 70 - 90 In - Lbs
7	Secure with Loctite 222.
12	54 - 81 Nm, 40 - 60 Ft - Lbs
12	Use Loctite 545 or Teflon tape.
14	10.2 - 12.4 Nm, 90 - 110 Ft - Lbs.

Repair Parts List, Figure 1

L3032

Item	Description	Qty.	Part Number				
			RC-106	RC-108	RC-1010	RC-1012	RC-1014
1	Base (not sold separately)	1	DD2265030	DD2268030	DD2250030	DD2255030	DD2258030
2	Bearing, Bottom ◆	1	DD2260107	DD2260107	DD2260107	DD2260107	DD2260107
3	U-Cup ▲	1	CB663041	CB663041	CB663041	CB663041	CB663041
4	Washer ▲	1	G384108	G384108	G384108	G384108	G384108
5	Bearing, Top ◆	1	G382107	G382107	G382107	G382107	G382107
6	Bearing, Stop Ring ◆	1	G831446	G831446	G831446	G831446	G831446
7	Stop Ring ◆	1	G385044	G385044	G385044	G385044	G385044
8	Saddle, Grooved	1	A102G	A102G	A102G	A102G	A102G
9	Wiper Ring ▲	1	G416044	G416044	G416044	G416044	G416044
10	Spring ●	1	DD2267110	DD2270110	DD2252110	DD2257110	DD2261110
11	Plunger (not sold separately)	1	DD2266040	DD2269040	DD2251040	DD2256040	DD2259040
12	Coupler	1	CR-400	CR-400	CR-400	CR-400	CR-400
13	Gasket ▲ ●	2	C846037	C846037	C846037	C846037	C846037
14	Spring Retainer ▲ ●	2	DD1543160	DD1543160	DD1543160	DD1543160	DD1543160
15	O-Ring ▲ ●	2	B1110903	B1110903	B1110903	B1110903	B1110903
16	Back-up ▲ ●	2	B1110564	B1110564	B1110564	B1110564	B1110564
N/S	Dust Cap ▲	1	DD1782020	DD1782020	DD1782020	DD1782020	DD1782020
N/S	Thread Protector ▲	1	DD1774271	DD1774271	DD1774271	DD1774271	DD1774271
N/S	O-Ring Coupler ▲	1	B1116803	B1116803	B1116803	B1116803	B1116803
N/S	Enerpac Decal ▲	1	DD2216026	DD2216026	DD2216026	DD2217026	DD2217026
N/S	Warning Decal ▲	1	DA5625026	DA5625026	DA5625026	DA5625026	DA5625026
N/S	O-Ring Saddle ▲	1	B1208503	B1208503	B1208503	B1208503	B1208503
▲	Repair Kit, Standard	-	RC10K52	RC10K52	RC10K52	RC10K52	RC10K52
◆ + ▲	Repair Kit, Premium	-	RC10K72	RC10K72	RC10K72	RC10K72	RC10K72
●	Spring Kit	-	RC10K33	RC10K34	RC10K35	RC10K36	RC10K37

Notes:

Premium repair kit includes all standard (▲) repair kit items plus additional premium (◆) items.
 N/S = Item not shown.

IMPORTANT: Shaded items are available only in kits (not sold separately).

Cylinders with Viton components only: Order Repair Kit RC102KV in addition to Repair Kit RC10K52 or RC10K72.
 Repair Kit RC102KV includes Viton components for items 3 and 9. Standard components are used in other locations.



To maintain your warranty:

- Use only Enerpac Oil
- Have your products inspected and repaired by an Enerpac Authorized Service Center



Visit www.enerpac.com for the location of the Enerpac Authorized Service Center nearest you.