

L2673 Rev. E 11/09

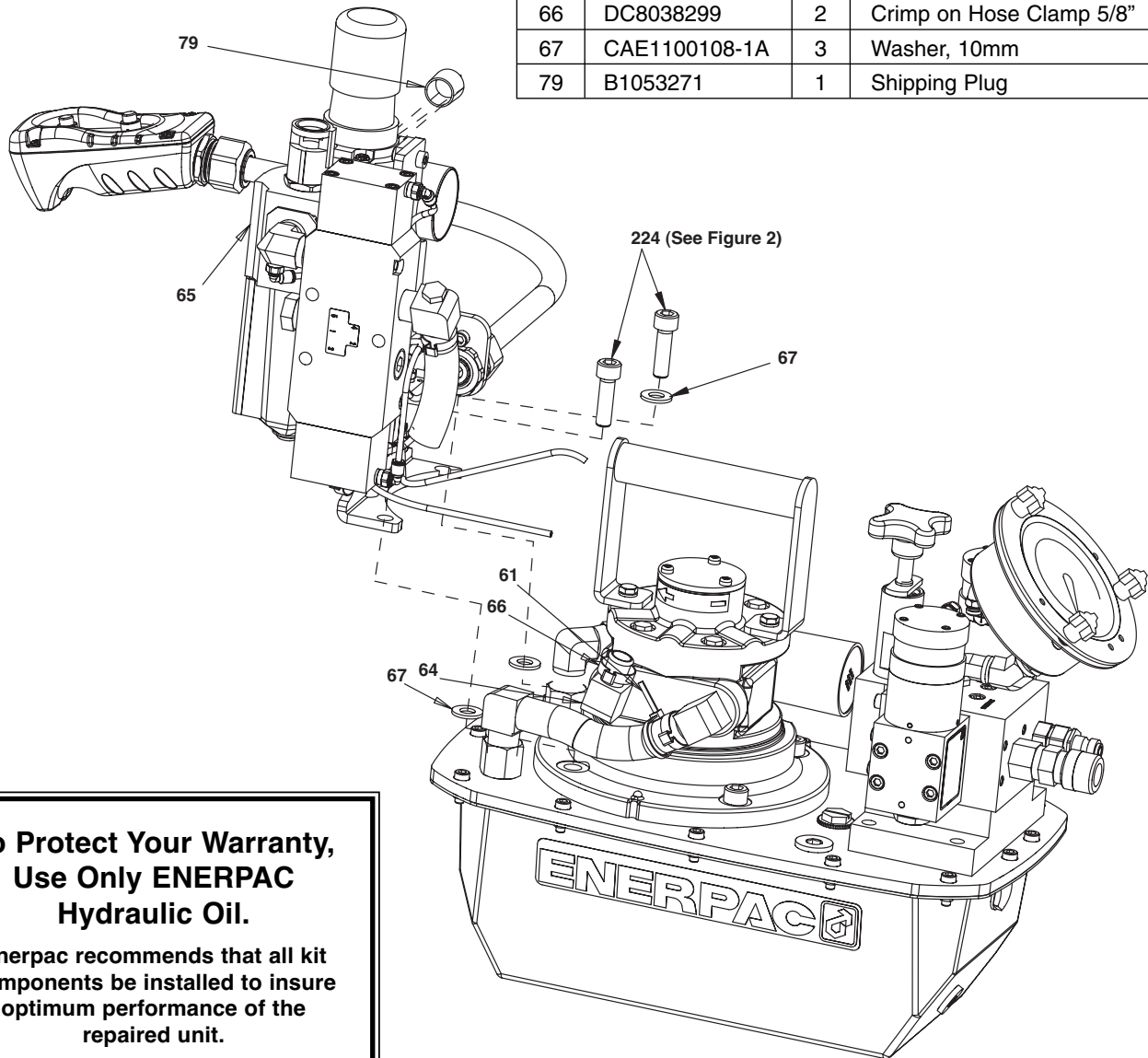
For Date Codes Beginning with the Letter "A"

This Repair Parts Sheet covers the following pump models. For Valve Part Sheet see corresponding valve model.

| Pump Model | Valve Model        | Valve Repair Part Sheet Number | Pump Model  | Valve Model        | Valve Repair Part Sheet Number |
|------------|--------------------|--------------------------------|-------------|--------------------|--------------------------------|
| ZA4204TX-E | VA42A (DC6920950)  | L2617                          | ZA4208TX-Q  | VA42QM (DC6923950) | L2617                          |
| ZA4204TX-Q | VA42AM (DC6921950) | L2617                          | ZA4204TX-ER | VA42E (DC6924950)  | L2617                          |
| ZA4208TX-E | VA42Q (DC6922950)  | L2617                          | ZA4204TX-QR | VA42EM (DC6925950) | L2617                          |

**Repair Parts List for Figure 1**

| Item | Part Number   | Qty. | Description                       |
|------|---------------|------|-----------------------------------|
| 61   | DC9876647     | 2    | Black Cable Tie, 6"               |
| 64   | DC8036038     | 1    | Elbow 5/8 Barbed to 1/2 NPT       |
| 65   |               | 1    | Air Logic Assembly. See Figure 6. |
| 66   | DC8038299     | 2    | Crimp on Hose Clamp 5/8"          |
| 67   | CAE1100108-1A | 3    | Washer, 10mm                      |
| 79   | B1053271      | 1    | Shipping Plug                     |



**To Protect Your Warranty,  
Use Only ENERPAC  
Hydraulic Oil.**

Enerpac recommends that all kit components be installed to insure optimum performance of the repaired unit.

**Figure 1, Mounting Arrangement, Air Logic Assembly**

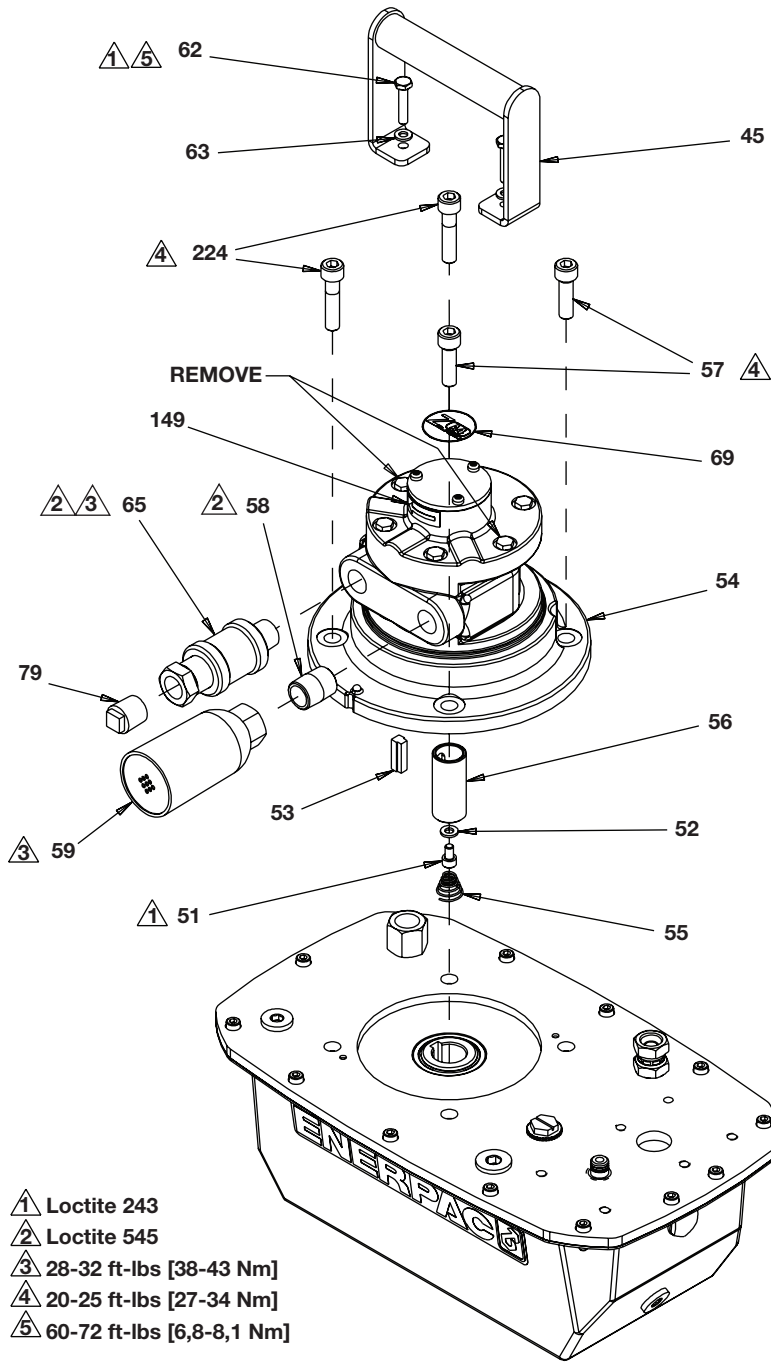


Figure 2, Air Motor Assembly

Repair Parts List for Figure 2

| Item | Part Number   | Qty. | Description   | Item | Part Number   | Qty. | Description                  |
|------|---------------|------|---|------|---------------|------|------------------------------|
| 45   | DC8056070     | 1    | Handle ZA4  | 56   | DA4918038     | 1    | Sleeve                       |
| 51   | CBE615028-1A  | 1    | M6x1x10 SHCS  | 57   | CBE1027028-1A | 2    | M10x35 SHCS                  |
| 52   | CAE1060108-1A | 1    | 6mm Washer  | 62   | B1461046X     | 2    | .25-28 x 1.25 Hex Head Screw |
| 53   | DC8091251     | 1    | Stepped Key 8mm/6mm                                 | 63   | CAE1060108-1A | 2    | 6MM Washer                   |
| 54   | DC8030900SR   | 1    | Air Motor Kit (includes 51, 52, 53, 55, 56, and 57) | 69   | DC8099026     | 1    | Decal ZA Class               |
| 55   | BSS5509D      | 1    | Spring  | 149  | CJ193026      | 1    | Rotation Decal               |
|      |               |      |   | 224  | CBE1031028-1A | 2    | M10 X 45 SHCS                |

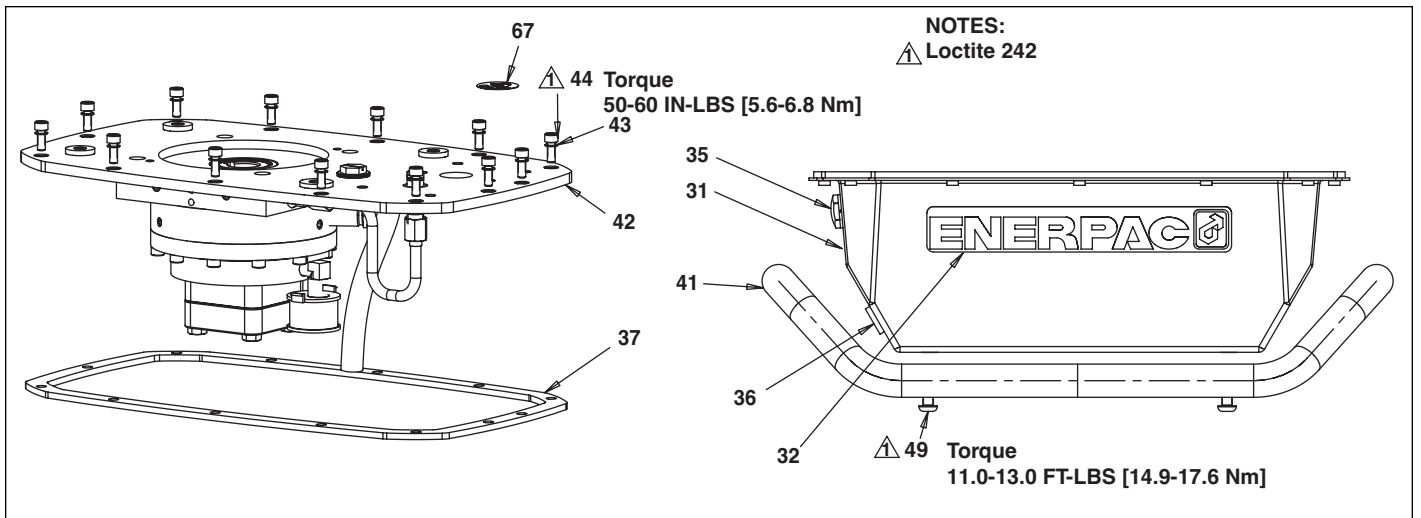


Figure 3, Reservoir Assembly

Repair Parts List for Figure 3

| Item | Part Number | Qty. | Description                        | Item | Part Number  | Qty. | Description                   |
|------|-------------|------|------------------------------------|------|--------------|------|-------------------------------|
| 31   | DC9379025SR | 1    | Reservoir 4L<br>(inc. 32, 35 & 37) | 37   | ★DC9551920   | 1    | Reservoir & MPE Gasket        |
| 31   | DC8136025SR | 1    | Reservoir 8L<br>(inc. 32, 35 & 37) | 41   | DC9590920    | 1    | Skid Bar 4L & 8L wo/ Heat Ex. |
| 32   | DC9596026   | 2    | Reservoir Decal                    | 42   | Basic Assy.  |      | See Fig. 4                    |
| 35   | DC85900SR   | 1    | Sight Glass 4L & 8L                | 43   | ★S3037       | 13   | Copper Gasket                 |
| 36   | DC8249006   | 1    | Plug SAE#8 (4L & 8L) Magnet        | 44   | CBE619028-1A | 13   | SHCS M6-1x16                  |
|      |             |      |                                    | 49   | CBE817028-1E | 4    | BHCS M8x12                    |
|      |             |      |                                    | 67   | DC9920026    | 1    | Decal, Read Instruction       |

★ Items included in Seal Kit ZE3K.

### Repair Parts List for Figure 4

| Item | Part Number  | Qty. | Description                |
|------|--------------|------|----------------------------|
| 10   | Pump Element | 1    | see RPS L2596 for MPE      |
| 11   | F100094-246  | 1    | Fitting 5-4 FTX-S          |
| 12   | F100097-16   | 1    | Fitting, Standard Pump     |
| 13   | DC9335646    | 1    | Hose, Bypass 8"            |
| 15   | DC9451101    | 1    | Cover Plate ZE             |
| 16   | DC9558920    | 1    | Breather Assembly          |
| 17   | B1007006     | 1    | Plug SAE #10               |
| 18   | A1009245     | 1    | 3/8 Flush Plug             |
| 21   | DC9173690    | 1    | Connector Fitting          |
| 22   | ★B1012564    | 1    | Back-up                    |
| 23   | ★B1012203    | 1    | O-Ring                     |
| 24   | ★DC9271167   | 1    | Copper Gasket              |
| 25   | ★DC9551920   | 1    | RES and MPE Gasket         |
| 26   | CBE621028-1A | 2    | SHCS M6x20                 |
| 27   | DC9663920    | 1    | Tube ASM Steel ZE Pump     |
| 28   | DC9600268    | 1    | Intake Tube 1.6" 4L and 8L |
| 29   | DC9178118    | 1    | Intake Filter              |

★Items included in Seal Kit ZE3K.

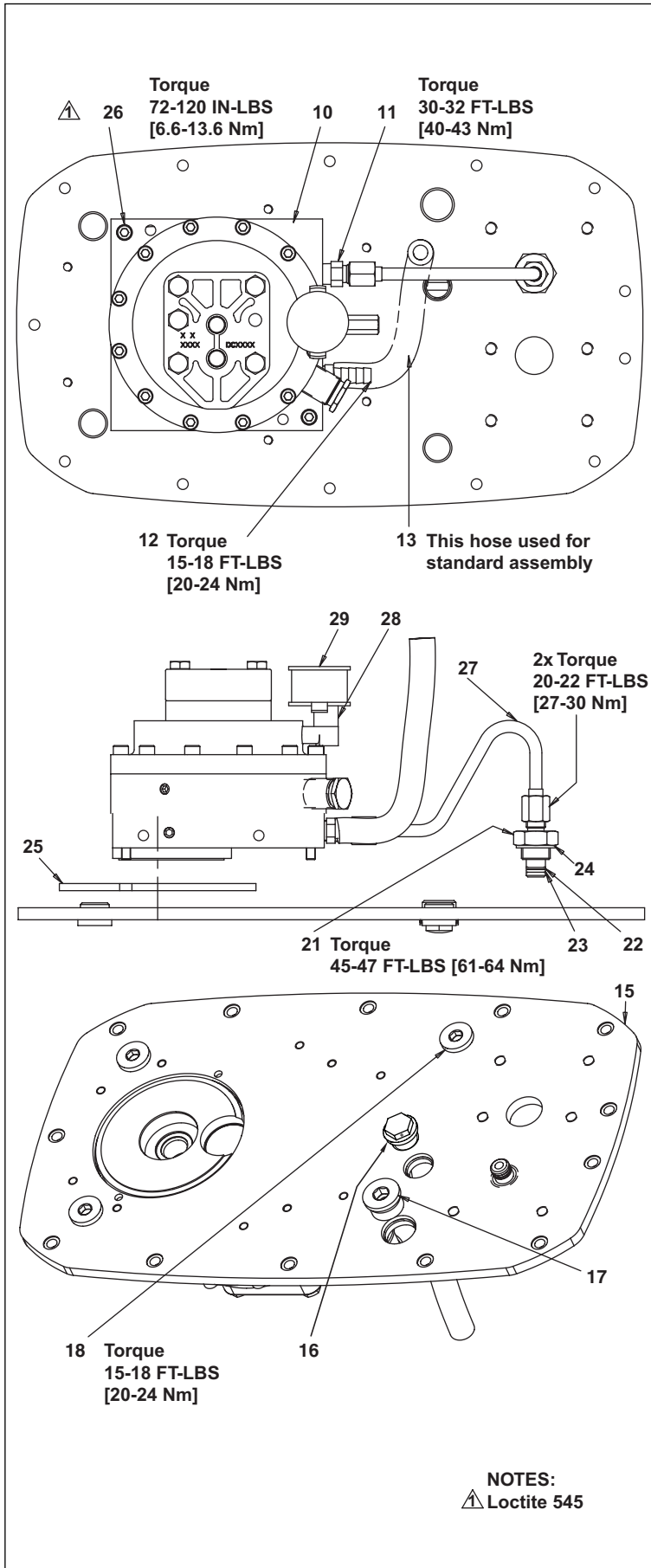
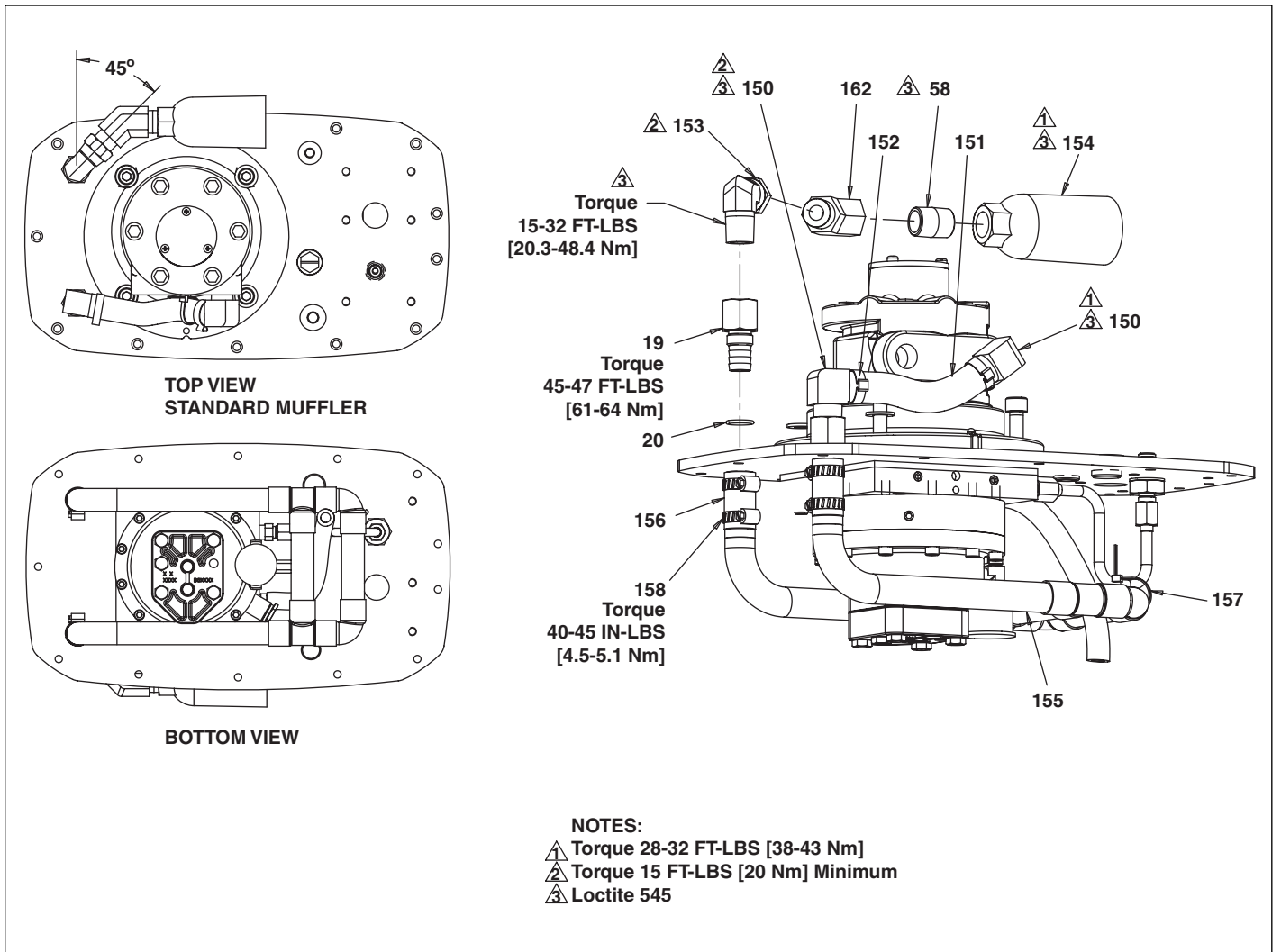


Figure 4, Basic Assembly



**Figure 5, Heat Exchanger**

| Repair Parts List for Figure 5 |             |      |                             |      |             |      |                     |
|--------------------------------|-------------|------|-----------------------------|------|-------------|------|---------------------|
| Item                           | Part Number | Qty. | Description                 | Item | Part Number | Qty. | Description         |
| 19                             | DC8035038   | 2    | Adapter                     | 154  | DC8032116   | 1    | Muffler, Parker     |
| 20                             | B1908503    | 2    | O-Ring BUNA-N               | 155  | DC8039471   | 1    | Heat Exchanger Coil |
| 58                             | DC8097095   | 1    | 1/2 NPT Short Pipe          | 156  | DC8043646   | 2    | Hose 5/8 ID         |
| 150                            | DC8036038   | 2    | Elbow 5/8 Barbed to 1/2 NPT | 157  | DC9989647   | 1    | Cable Tie 12.5"     |
| 151                            | DC8046646   | 1    | Hose 5/8 ID 4.9"            | 158  | CB40299     | 4    | Hose Clamp          |
| 152                            | DC8038299   | 2    | Hose Clamp 5/8"             | 162  | DA1235095   | 1    | Fitting 1/2 NPT     |
| 153                            | DC8126095   | 1    | Elbow 1/2 NPT               |      |             |      |                     |

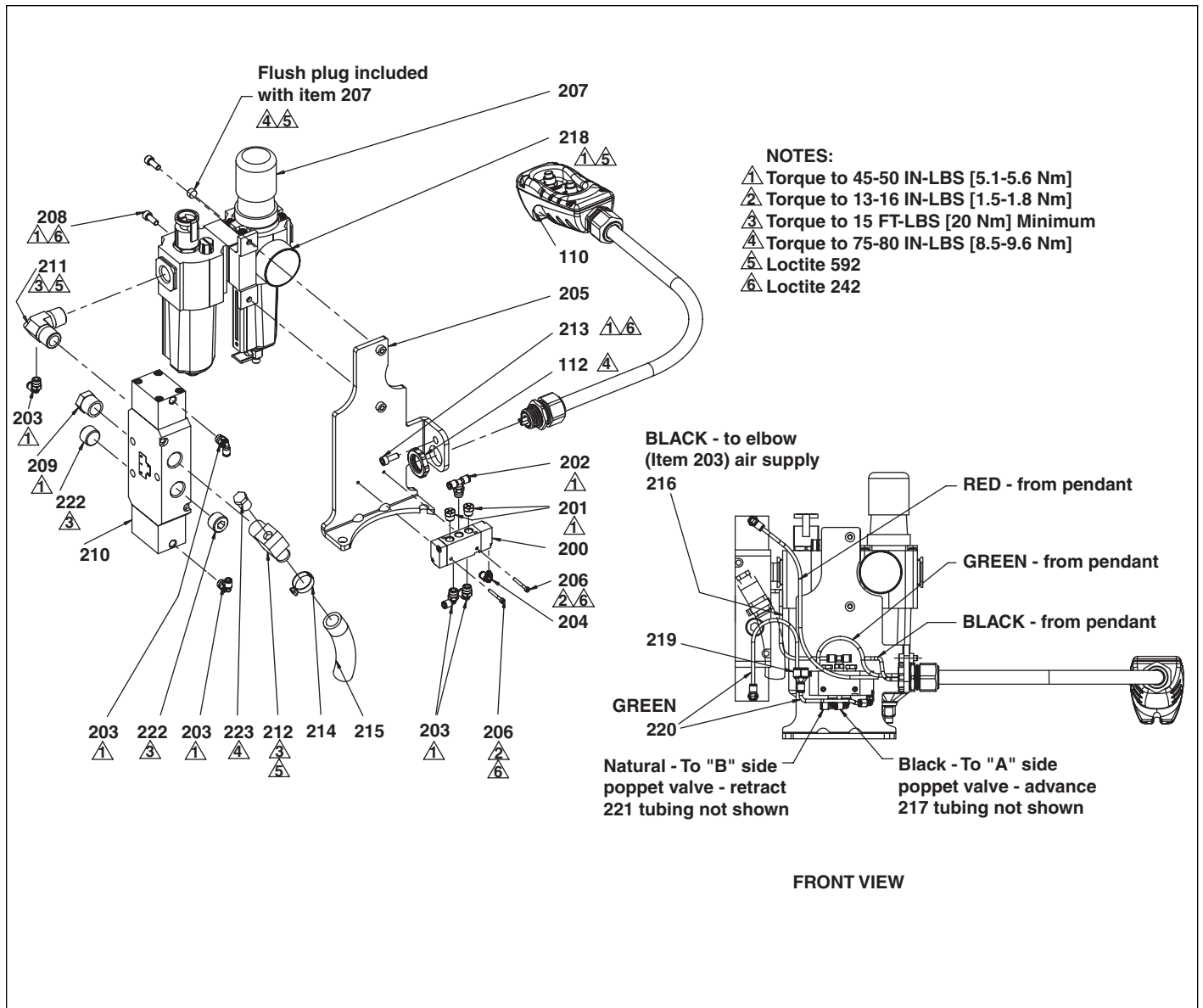
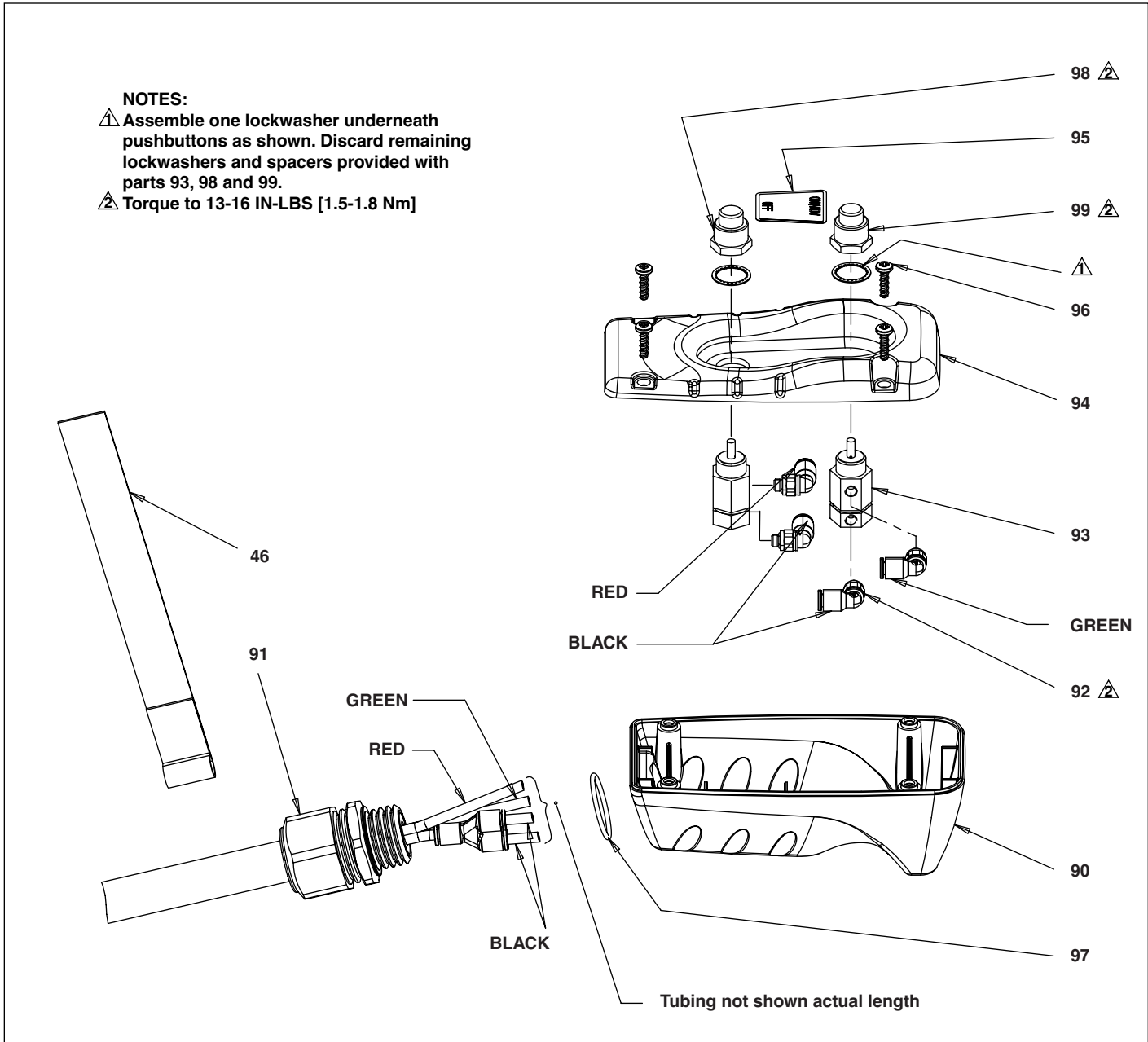


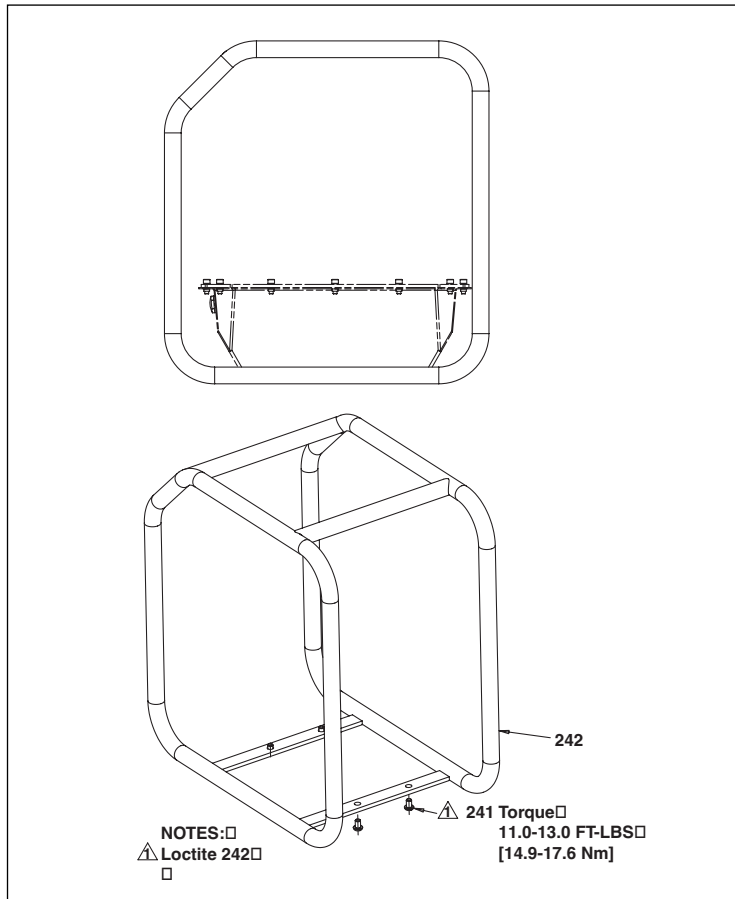
Figure 6, Air Logic Assembly

| Repair Parts List for Figure 6 |              |      |                               |      |               |      |                                       |
|--------------------------------|--------------|------|-------------------------------|------|---------------|------|---------------------------------------|
| Item                           | Part Number  | Qty. | Description                   | Item | Part Number   | Qty. | Description                           |
| 110                            | DC9948900SR  | 1    | Air Pendant Assy (see Fig. 7) | 212  | DC8108038     | 1    | Elbow                                 |
| 112                            | DC9683021    | 1    | Locking Nut 25mm              | 213  | CBE6150028-1A | 1    | M6 x 10mm SHCS                        |
| 200                            | DC8064660    | 1    | Air Directional Valve         | 214  | DC8038299     | 1    | Hose Clamp 5/8"                       |
| 201                            | DC352118     | 2    | Vent Pug 1/8 NPT              | 215  | DC8045646     | 1    | Hose 5/8" ID x 3.7"                   |
| 202                            | DC8171097    | 1    | Tee 1/8 x 5/32                | 216  | DC8095268     | 1    | Tubing 5/32 x 7.3" Black              |
| 203                            | DC8170097    | 5    | Elbow 1/8 x 5/32              | 217  | DC8096268     | 1    | Tubing 5/32 x 18" Black (not shown)   |
| 204                            | DC8169097    | 1    | Elbow #10 x 5/32              | 218  | DC8101223     | 1    | Gauge 0-160 PSI                       |
| 205                            | DC8042111    | 1    | Bracket                       | 219  | DC3574097     | 1    | Y Fitting                             |
| 206                            | CBE323028-1A | 2    | M3 x .5 x 25mm SHCS           | 220  | DC8124268     | 2    | Tubing 5/32 x 4.5" Green              |
| 207                            | DC8033118    | 1    | Filter                        | 221  | DC8125268     | 1    | Tubing 5/32 x 18" Natural (not shown) |
| 208                            | CBE619028-1A | 2    | M6-1 x 16 SHCS                | 222  | A1010245      | 2    | 1/2 NPT Flush Plug                    |
| 209                            | F100118-20   | 1    | Breather Vent                 |      |               |      |                                       |
| 210                            | DC8109662    | 1    | Air Vent                      |      |               |      |                                       |
| 211                            | DC8086095    | 1    | Elbow                         |      |               |      |                                       |



**Figure 7, Pendant Assembly**

| Repair Parts List for Figure 7 |             |      |                       |      |             |      |                   |
|--------------------------------|-------------|------|-----------------------|------|-------------|------|-------------------|
| Item                           | Part Number | Qty. | Description           | Item | Part Number | Qty. | Description       |
| 46                             | DA7570217   | 1    | Cord Strap            | 95   | DC8127026   | 1    | Pendant Decal     |
| 90                             | DC9991424   | 1    | Lower Pendant Housing | 96   | DC9428008   | 4    | Screw #8 x 1/2    |
| 91                             | DC1400646   | 1    | Air Tube              | 97   | B1227503    | 1    | O-Ring            |
| 92                             | DC8060097   | 4    | Elbow #10 x 5/32      | 98   | DC3578379   | 1    | Push Button Red   |
| 93                             | DC8059379   | 2    | Push Button Valve     | 99   | DC3577379   | 1    | Push Button Green |
| 94                             | DC8122424   | 1    | Upper Pendant Housing |      |             |      |                   |



| Repair Parts List for Figure 8                   |              |      |                   |
|--|--------------|------|-------------------|
| Item   | Part Number  | Qty. | Description       |
| 241  | CBE817028-1E | 4    | BHCS M8x12        |
| 242  | DC8040920    | 1    | Roll Bar Assembly |
| These parts are included in Roll Bar Kit ZRC-04. |              |      |                   |

**TROUBLESHOOTING:**

Only qualified hydraulic technicians should service the pump or system components. A system failure may or may not be the result of a pump malfunction. To determine the cause of the problem, the complete system must be included in any diagnostic procedure.

**Figure 8, Rollbar Assembly ZRC-04**

| TROUBLESHOOTING GUIDE                             |  |  |
|---|--|--|
| PROBLEM   | POSSIBLE CAUSE                                       | REPAIR ACTION  |
| Pump will not start                               | No air to pump                                       | Make sure air is not shut off to pump<br>Check air line for blockage |
|   | Low air pressure                                     | Check air pressure setting at air pressure regulator                 |
|   | Low air SCFM   | Make sure air compressor has enough SCFM to operate pump             |
|   | Air valve not working                                | Replace air valve  |
|   | Air motor not working                                | Replace air motor  |
| Pump fails to build pressure                      | External leak in system                              | Repair any external components that are leaking                      |
|   | Internal leak in pump                                | See RPS L2596 for basic pump assembly                                |
|   | Internal leak in valve                               | See RPS for specific control valve as listed on valve chart          |
|   | Internal leak in system component                    | Repair system component  |
| Pump builds less than full pressure               | Relief valve set to low                              | Adjust relief valve  |
|   | External leak in system                              | Repair leak  |
|   | Internal leak in pump                                | Back pressure test, locate and repair leak (See RPS L2596)           |
|   | Internal leak in valve                               | See RPS for specific control valve as listed on valve chart          |
|   | Internal leak in system component                    | Repair system component  |
| Pump builds full pressure, but load does not move | Load greater than cylinder capacity at full pressure | Higher capacity cylinder is needed to lift load                      |
|   | Flow to cylinder blocked                             | Check system components  |





## Enerpac Worldwide Locations

### Africa

ENERPAC Middle East FZE  
Office 423, JAFZA 15  
P.O. Box 18004  
Jebel Ali, Dubai  
United Arab Emirates  
Tel: +971 (0)4 8872686  
Fax: +971 (0)4 8872687

### Australia and New Zealand

Actuant Australia Ltd.  
Block V Unit 3  
Regents Park Estate  
391 Park Road  
Regents Park NSW 2143  
(P.O. Box 261) Australia  
Tel: +61 297 438 988  
Fax: +61 297 438 648

### Brazil

Power Packer do Brazil Ltda.  
Rua dos Inocentes, 587  
04764-050 - Sao Paulo (SP)  
Tel: +55 11 5687 2211  
Fax: +55 11 5686 5583  
Toll Free: 0800 891 5770  
vendabrasil@enerpac.com

### Canada

Actuant Canada Corporation  
6615 Ordan Drive, Unit 14-15  
Mississauga, Ontario L5T 1X2  
Tel: +1 905 564 5749  
Fax: +1 905 564 0305  
Toll Free:  
Tel: +1 800 268 4987  
Fax: +1 800 461 2456  
Technical Inquiries:  
techservices@enerpac.com

### China

Actuant Industries Co. Ltd.  
No.76 Nanjing Road,  
Taicang Economic Dep Zone  
Jiangsu, China  
Tel: +86 0512 5328 7529  
+86 0512 5328 7500 7529  
Fax: +86 0512 5335 9690

### Actuant China Ltd. (Peking)

709B Diyang Building  
Xin No. 2, Dong San Huan North Rd.  
Beijing City, 100028 China  
Tel: +86 10 845 36166  
Fax: +86 10 845 36220

### France, Switzerland francophone

ENERPAC  
Une division de ACTUANT France S.A.  
ZA de Courtaboeuf  
32, avenue de la Baltique  
91140 VILLEBON /YVETTE  
France  
Tel: +33 1 60 13 68 68  
Fax: +33 1 69 20 37 50

### Germany, Austria, Switzerland, Greece, Baltic States, Central and Eastern Europe

ENERPAC GmbH  
P.O. Box 300113  
D-40401 Düsseldorf  
Willstätterstrasse 13  
D-40549 Düsseldorf Germany  
Tel: +49 211 471 490  
Fax: +49 211 471 49 28

### India

ENERPAC Hydraulics Pvt. Ltd.  
No. 1A, Peenya Industrial Area  
IInd Phase, Bangalore, 560 058  
India  
Tel: +91 80 40 792 777  
Fax: +91 80 40 792 792

### Italy

**ENERPAC S.p.A.**  
Via Canova 4  
20094 Corsico (Milano)  
Tel: +39 02 4861 111  
Fax: +39 02 4860 1288

### Japan

Applied Power Japan LTD KK  
Besshocho 85-7  
Kita-ku, Saitama-shi 331-0821  
Japan  
Tel: +81 48 662 4911  
Fax: +81 48 662 4955

### Middle East, Turkey and Caspian Sea

ENERPAC Middle East FZE  
Office 423, JAFZA 15  
P.O. Box 18004  
Jebel Ali, Dubai  
United Arab Emirates  
Tel: +971 (0)4 8872686  
Fax: +971 (0)4 8872687

◆ e-mail: [info@enerpac.com](mailto:info@enerpac.com)

### Russia and CIS

(excl. Caspian Sea Countries)  
Actuant LLC  
Admiral Makarov Street 8  
125212 Moscow  
Russia  
Tel: +7-495-9809091  
Fax: +7-495-9809092

### Singapore

Actuant Asia Pte Ltd.  
37C, Benoi Road Pioneer Lot,  
Singapore 627796  
Tel: +65 68 63 0611  
Fax: +65 64 84 5669  
Toll Free:  
Tel: +1800 363 7722  
Technical Inquiries:  
[tech.service-sg@enerpac.com](mailto:tech.service-sg@enerpac.com)

### South Korea

Actuant Korea Ltd.  
3Ba 717,  
Shihwa Industrial Complex  
Jungwang-Dong, Shihung-Shi,  
Kyunggi-Do  
Republic of Korea 429-450  
Tel: +82 31 434 4506  
Fax: +82 31 434 4507

### Spain and Portugal

ENERPAC SPAIN, S.L.  
Avda. Los Frailes, 40 – Nave C & D  
Pol. Ind. Los Frailes  
28814 DAGANZO DE ARRIBA  
(Madrid) Spain  
Tel: +34 91 884 86 06  
Fax: +34 91 884 86 11

### Sweden, Denmark, Norway, Finland and Iceland

Enerpac Scandinavia AB  
Fabriksgatan 7  
412 50 Gothenburg  
Sweden  
Tel: +46 (0) 31 7990281  
Fax: +46 (0) 31 7990010  
Inquiries:  
[Scandinavianinquiries@enerpac.com](mailto:Scandinavianinquiries@enerpac.com)

◆ internet: [www.enerpac.com](http://www.enerpac.com)

### The Netherlands, Belgium and Luxembourg

ENERPAC B.V.  
Galvanistraat 115, 6716 AE Ede  
P.O. Box 8097, 6710 AB Ede  
The Netherlands  
Tel: +31 318 535 800  
Fax: +31 318 525 613  
+31 318 535 848

Inquiries:

[beneluxinquiries@enerpac.com](mailto:beneluxinquiries@enerpac.com)

### United Kingdom and Ireland ENERPAC Ltd.,

Bentley Road South  
Darlaston, West Midlands  
WS10 8LQ, England  
Tel: +44 (0)121 50 50 787  
Fax: +44 (0)121 50 50 799

### USA, Latin America and Caribbean

ENERPAC  
P.O. Box 3241  
6100 N. Baker Road  
Milwaukee, WI 53209 USA  
Tel: +1 262 781 6600  
Fax: +1 262 783 9562  
User inquiries:  
+1 800 433 2766  
Distributor inquiries/orders:  
+1 800 558 0530  
Technical Inquiries:  
[techservices@enerpac.com](mailto:techservices@enerpac.com)

### ENERPAC

704 W. Simonds  
Dallas, TX 75159, USA  
Tel: +1 972 287 2390  
Fax: +1 972 287 4469

All Enerpac products are guaranteed against defects in workmanship and materials for as long as you own them.  
For your nearest authorized Enerpac Service Center, visit us at [www.enerpac.com](http://www.enerpac.com)