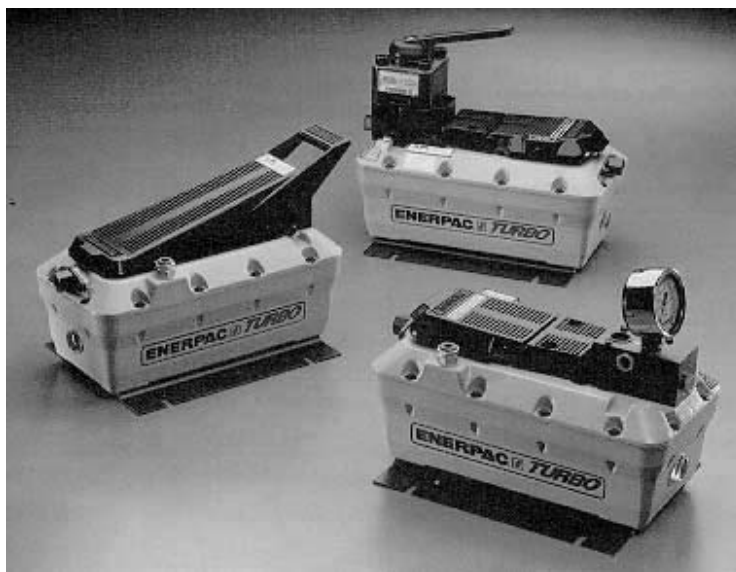


INSTALL ALL KIT COMPONENTS TO INSURE OPTIMUM PERFORMANCE OF THE REPAIRED PUMP.



NOTE: Storing the pump in the vertical position may cause it to loose its prime. If pump loses its prime:

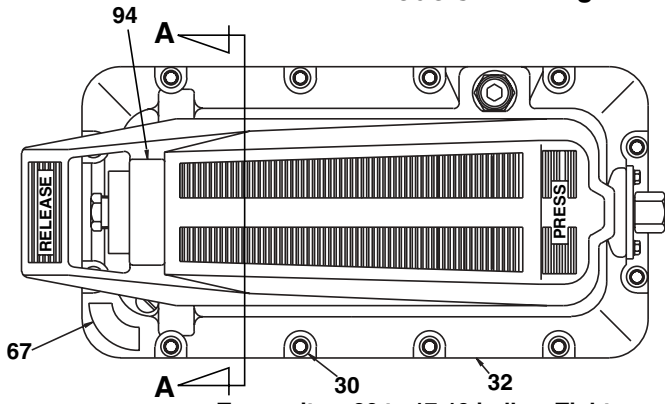
1. Remove cover.
2. Remove relief valve.
3. Fill chamber with oil.
4. Replace relief valve. Apply Loctite 545 to threads and torque to 10-12 ft-lbs. [14-16 Nm].
5. Replace pump cover. Tighten every other fastener around the perimeter of the cover in one continuous direction.

CONTENTS

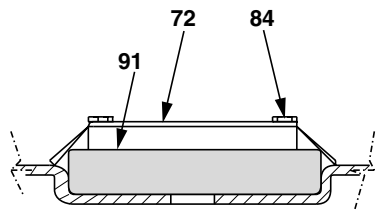
Figure 1 - Reservoir Cover & Treadle....2
 Figure 2 - Cover Assembly Side View ...4
 Figure 3 - Cover Assembly Tool4
 Figure 4- Reservoir End View.....5
 Figure 5 - Hydraulic Section Detail6
 Figure 6 - Seal Push Tool.....7
 Figure 7 - Seal Guide Tool7
 Figure 8 - Pump Manifolds8
 Figure 9 - Release Valve9
 Figure 10 - Manual Valve 10
 Table 1 - Relief Valve Settings 12
 Table 2 - Repair Kit Application 12

Figure 1 - Reservoir Cover & Treadle

PAT Models Including Models 7002, 7005

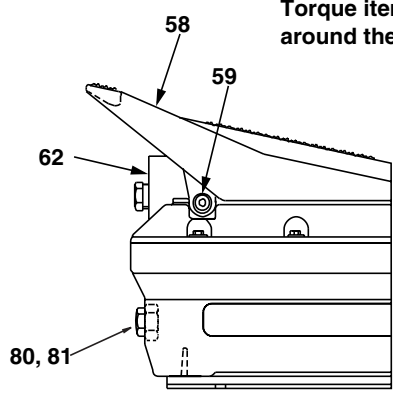


Install muffler pad as shown.

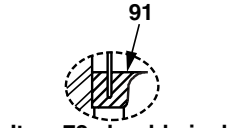
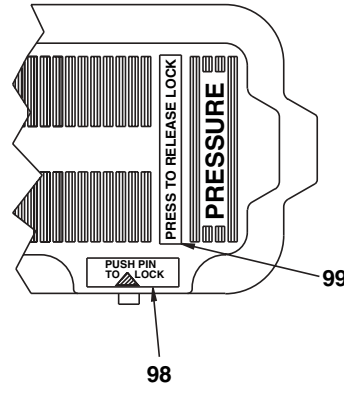


SECTION "A-A"

Torque item 30 to 17-19 in-lbs. Tighten every other fastener around the perimeter in one continuous direction.

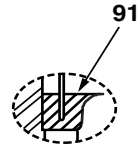
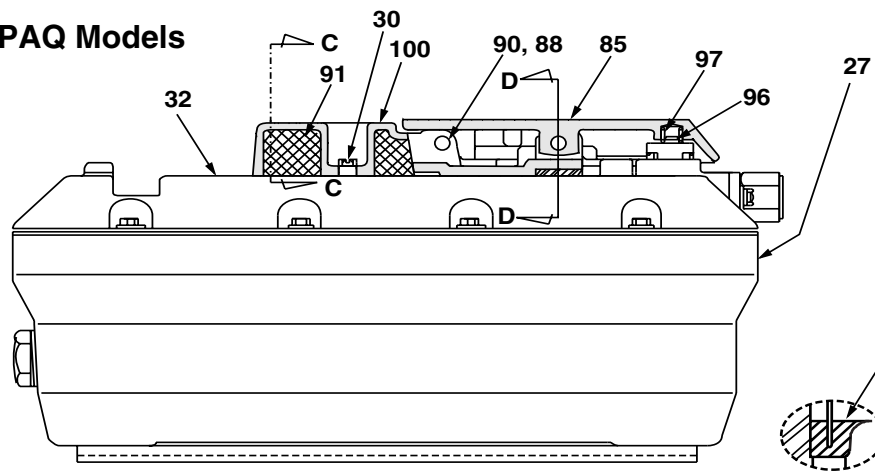


PAM, PAN, PAQ Models

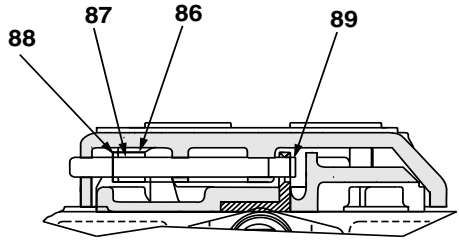


Item 72 should pinch item 91 as shown.

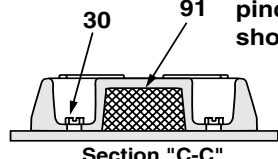
PAM, PAN, and PAQ Models



Item 100 should pinch item 91 as shown.



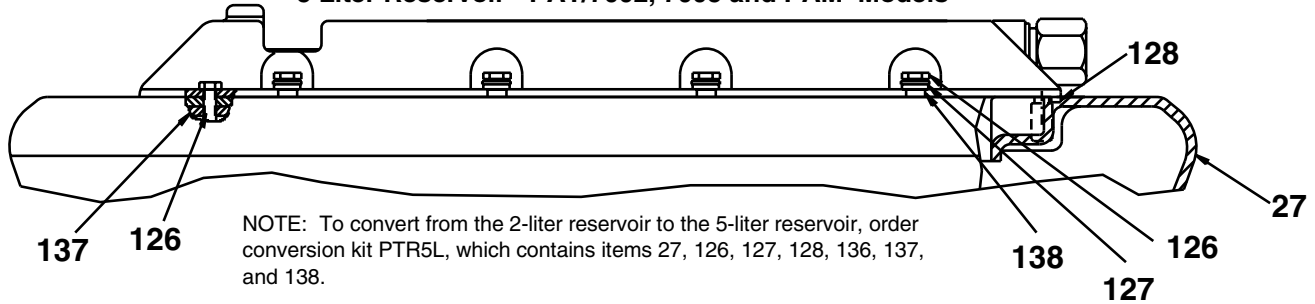
Section "D-D"



Section "C-C"

Muffler (91) to be assembled into Item 100 as shown above. Torque Item 30 to 17-19 in-lbs.

5 Liter Reservoir - PAT/7002, 7005 and PAM Models

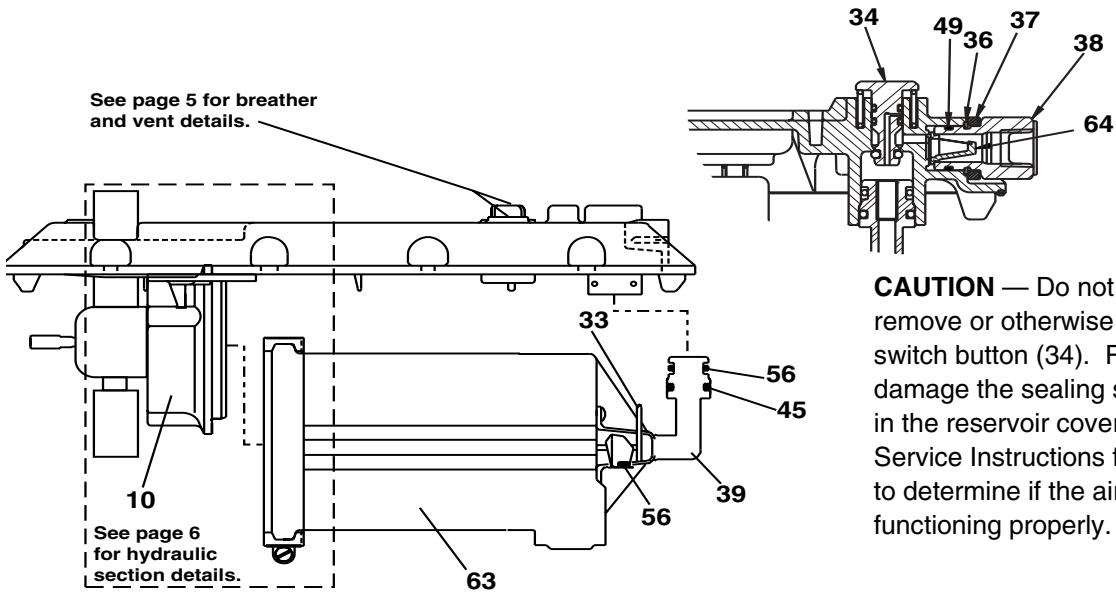


NOTE: To convert from the 2-liter reservoir to the 5-liter reservoir, order conversion kit PTR5L, which contains items 27, 126, 127, 128, 136, 137, and 138.

REPAIR PARTS LIST FOR FIGURE 1

Item	Part Number	Quantity	Description	Item	Part Number	Quantity	Description
27	DA5528025	1	Yellow 2 liter Reservoir	72	DA5690098	1	Muffler Cover-T Models
	DA7902025	1	Black 2 liter Reservoir	80	DC85900SR	1	Sight Glass Ass'y.
	DA7903025	1	Red 2 liter Reservoir (7002)	81	B1016123	1	Hex Nut
	DA7904025	1	Orange 2 liter Reservoir	84	DC1523.028	2	Screw-T Models
	DA7905025	1	Blue 2 liter Reservoir	85	DA7937218	1	Treadle-M,N,Q Models
	DA7906025	1	Green 2 liter Reservoir	86	DA8508110	1	Spring-M,N,Q Models
	DA11095025	1	Translucent 2 liter Reservoir	87	DA8505186	1	Spacer-M,N,Q Models
	DC975286 DC1864900	1 1	Black 5 liter Reservoir Red 5 liter Reservoir (7005)	88	DA8507349	1	Ret. Ring M,N,Q
30	DA5938028	12	Hi Lo Screw (7002)	89	DA7940061	1	Latch Down Pin-M,N,Q
	U972038028	12	Hi Lo Screw (7005)				
See Fig. 2	DA4890020SR	1	Yellow Cover Assembly	90	DA7939061	1	Hinge Pin- M,N,Q
	DA7907020SR	1	Black Cover Assembly	91	DA8625116	1	Muffler
	DA7908020SR	1	Red Cover Assembly	94	DA6773026	1	Decal
	DA7909020SR	1	Orange Cover Ass'y.	96	DA8670013	1	Spring Guide-M,N,Q
	DA7910020SR	1	Blue Cover Assembly	97	DA8506110	1	Spring-M,N,Q
	DA7911020SR	1	Green Cover Assembly	98	DA8743026	1	Decal-M,N,Q
	DA11098020	1	Translucent Cover Ass'y.	99	DA8744026	1	Decal-M,N,Q
58	DA4849218	1	Treadle-T Models	100	DA7935111	1	Mounting Bracket Casting-M,N,Q
59	DA4236242	2	Shoulder Screw -T Models	126	DC116046	16	Hex Hd. Mach. Screw
62	DA4836900SR	1	Release Valve Assembly (see page 9)	127	★ DC1162108	12	Sealing Washer
67	DA5789026	1	Caution Decal - 2 liter	128	★ DC714517	1	O-Ring Gasket Cover
	DA7931026	1	Caution Decal - 5 liter	137	DC973101	2	Resv. Cover Plate
				138	★ DC1160186	12	Nylon Spacer

Figure 2 - Cover Assembly Side View



CAUTION — Do not attempt to remove or otherwise service the air switch button (34). Removal will damage the sealing surfaces molded in the reservoir cover. Refer to the Service Instructions for test procedure to determine if the air button seals are functioning properly.

Replacement Reservoir Cover Includes:

- 1. air button assembly (34)
- 2. reservoir safety relief (44,65,66,75)
- 3. breather seals (52, 53)
- 4. reservoir vent (42, 43, 54, 92)
- 5. valve block-hydraulic tube seals (50, 51)
- 6. valve block gasket (95)

See Item 32 on page 3 for part numbers for the Replacement Cover Assemblies.

REPAIR PARTS LIST FOR FIGURE 2							
Item	Part Number	Quantity	Description	Item	Part Number	Quantity	Description
10	DA4287111	1	Mounting Bracket	39	DA7059900	1	Elbow Assembly
33	★ DC1402017	1	Retaining Ring	45	★ DA5521149	1	Retaining Pin
34	not serviceable	1	Air Button Assembly	49	★ B1220503	1	O-Ring
36	★ DA5026349	1	Retaining Ring	56	★ B1009503	2	O-Ring
37	DA4847799	1	Stamped Bracket	63	DA4283900SR	1	Air Motor Assembly
38	DA5295034	1	Swivel Coupler	64	★ DA5015118SR	1	Filter

★ Items included in and available only as part of Repair Kit. See Table 2 on back cover for Repair Kit ordering information.

Figure 3 - Cover Assembly Tool

Use the cover assembly tool to push the retaining ring (item 132) onto the poppet (item 130).

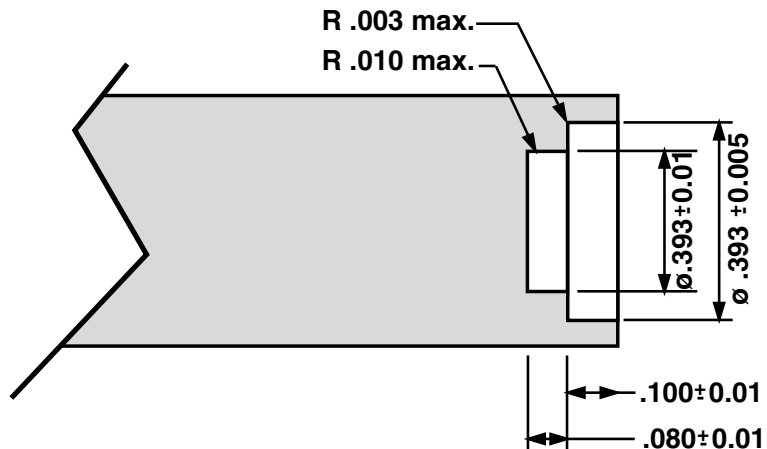
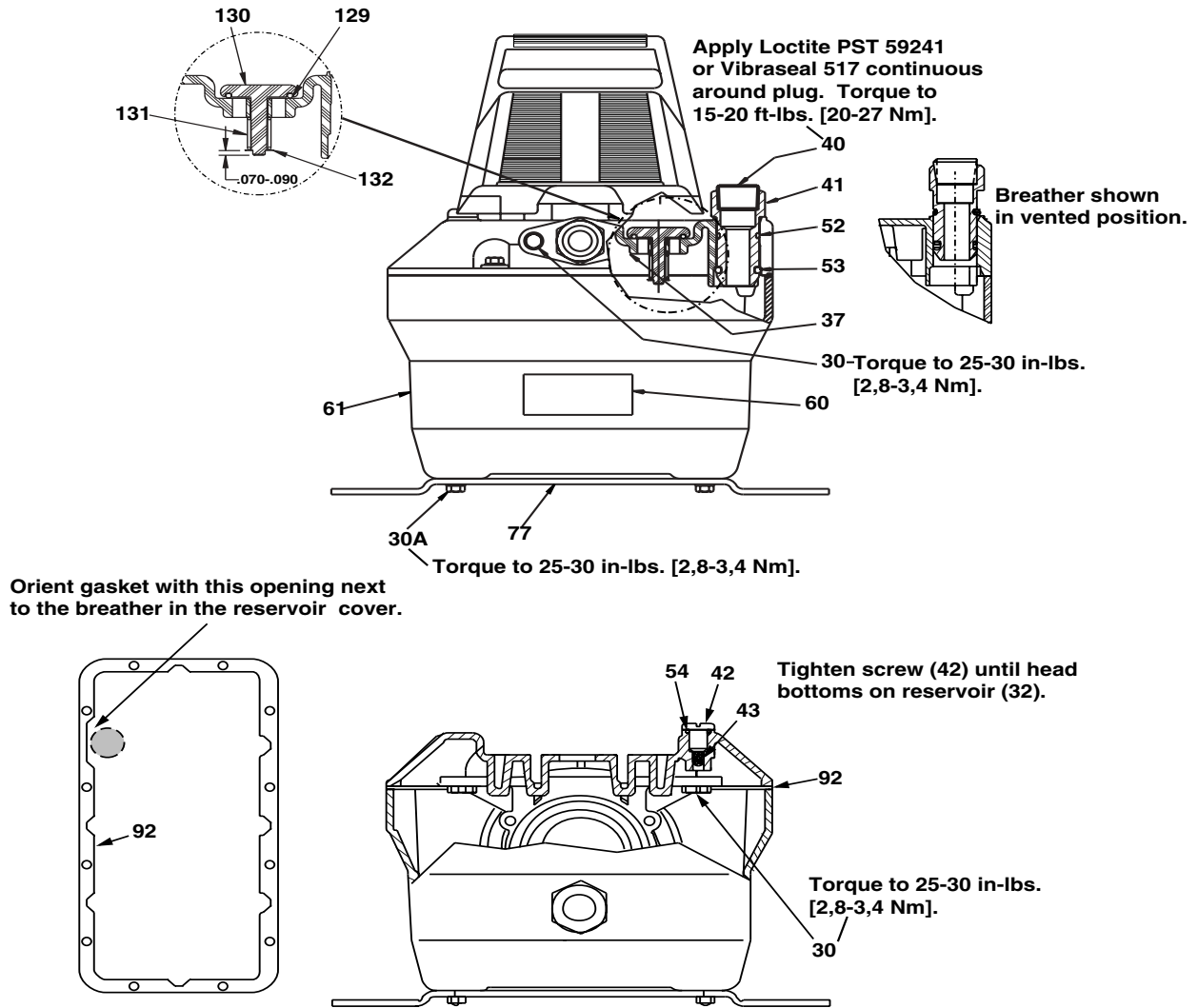


Figure 4 - Reservoir End View



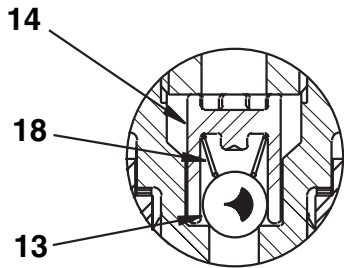
REPAIR PARTS LIST FOR FIGURE 4							
Item	Part Number	Quantity	Description	Item	Part Number	Quantity	Description
30	DA5938028	4	Hi Lo Screw	54	★ B1005503	1	Seal
30A	DA5938028	4	Hi Lo Screw - 2 liter	60	DA4296026	1	Model Decal
	F866028	4	Hi Lo Screw - 5 liter	61	DA5529026	2	Enerpac Decal - 2 liter
37	DA4847799	2	Stamped Bracket		DC1814026	2	Enerpac Decal - 2 liter (7002)
					DA9348026	2	Enerpac Decal - 5 liter
40	A1009245	1	Plug	77	MTB1	1	Mounting Bracket Kit
41	DA4871118	1	Breather	92	★ DA6328167	1	Reservoir Gasket
42	DC157028	1	Pan Head Screw		★ U972038167	1	Reservoir Gasket (7002)
				129	★ B1224503	1	O-Ring
43	DA4390118	1	Filter	130	H DC708440	1	Poppet
52	★ DA5349503	1	Wear Coated O-Ring	131	★ DC821110	1	Compression Spring
53	★ B1010503	1	O-Ring	132	★ DC822044	1	Star Washer

★ Items included in and available only as part of Repair Kit. See Table 2 on back cover for Repair Kit ordering information.

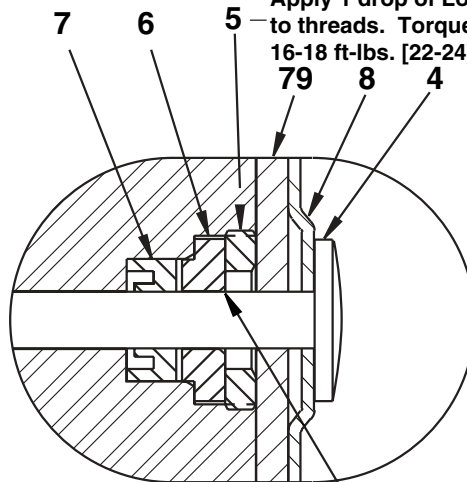
Figure 5 - Hydraulic Section Detail

NOTE: The step seal, item 7, is very difficult to install without the seal tools in Figures 6 and 7.

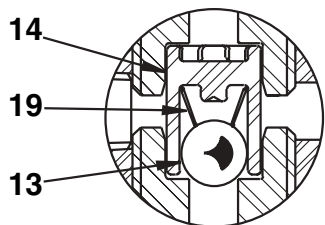
Apply 1 drop of Loctite 242 to threads. Torque to 16-18 ft-lbs. [22-24].



Detail F



Detail D

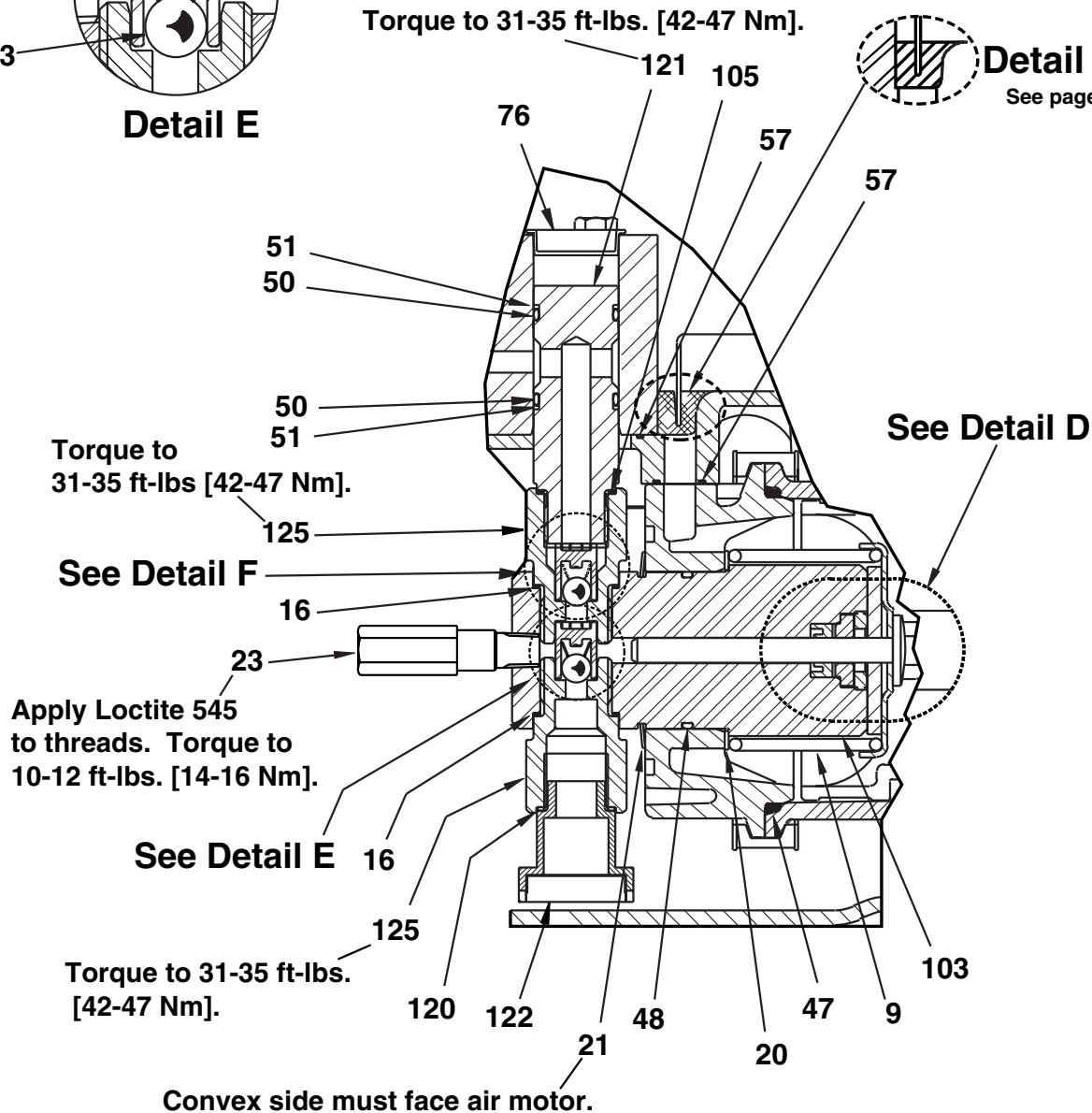


Detail E

Torque to 31-35 ft-lbs. [42-47 Nm].



Detail "J"
See page 2.

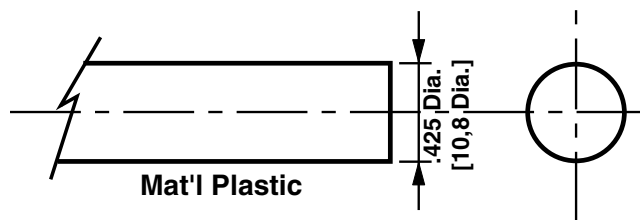


REPAIR PARTS LIST FOR FIGURE 5

Item	Part Number	Quantity	Description	Item	Part Number	Quantity	Description
4	CB180040	1	Plunger	23	DA8802900SR	1	Relief Valve Assembly
5	★ DA1204044	1	Bearing Retainer	47	★ B1282503	1	O-Ring
6	★ CB624108	1	Back-Up Bearing	48	★ B1258503	1	O-Ring
7	★ CB918041	1	U-Cup	50	★ B1016803	2	O-Ring
8	DA4284108	1	Spring Washer	51	★ DA4974367	2	Back-Up Ring
9	DA4285110	1	Spring	57	★ DA12342037	1	Gasket Set
13	★ B1007016	1	Ball	76	DA5854009	1	Caplug (not w/Man. Vlv.)
14	★ DA3682013	2	Ball Guide	79	★ DA6600108	1	Rubber Washer
16	★ DA3811167	2	Copper Gasket	103	DC114030	1	Cylinder
18	DA4874110	1	Conical Spring	105	★ DC170167	1	Copper Gasket
19	★ DA6911210	1	Conical Spring	120	★ B1221503	1	O-Ring
20	DA4298108	1	Washer	121	DC5268SR	1	Pressure Tube
21	★ DA4343044	1	Bowed Retaining Ring	122	DC442900SR	1	Intake Tube
				125	DC283290SR	2	Seat

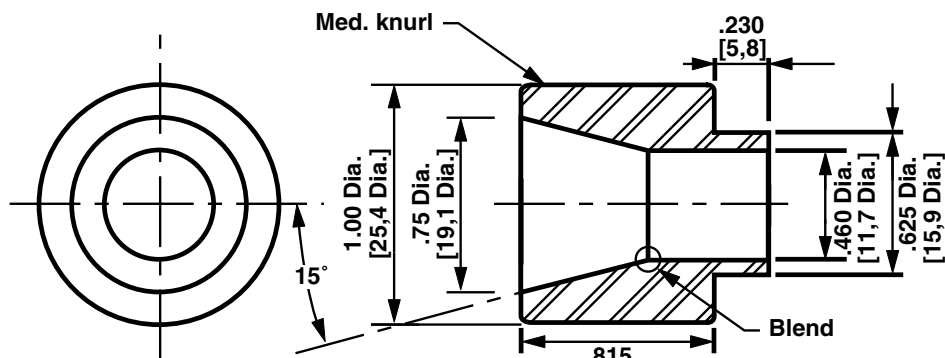
★ Items included in and available only as part of Repair Kit. See Table 2 on back cover for Repair Kit ordering information.

Figure 6 - Seal Push Tool



Dimensions in in. [mm]

Figure 7 - Seal Guide Tool

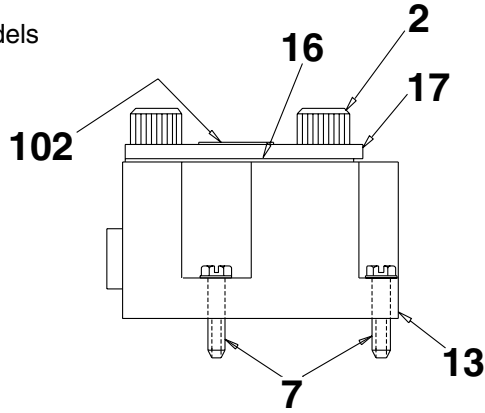


Mat'l Steel

Dimensions in in. [mm]

Figure 8 - Pump Manifolds

PAN and PAQ Models



NOTE: Use PAC1053K to service PAN and PAQ Model Pumps.

REPAIR PARTS LIST FOR FIGURE 8 (N and Q MODELS)

Item	N Type Manifold	Rescue—Q (NPT) Manifold	Quantity	Description
2	CBA1221028-1A M12X1,75 20mm	—	4	Socket Head Cap Screw
7	DC874028	CU874028	4	Screw
13	DA9753840SR	DA9751190SR	1	Manifold
16	★ DA9787037	—	1	Gasket
17	DA9788098	—	1	Cover
102	DA9554026	DA9554026	1	Warning Decal

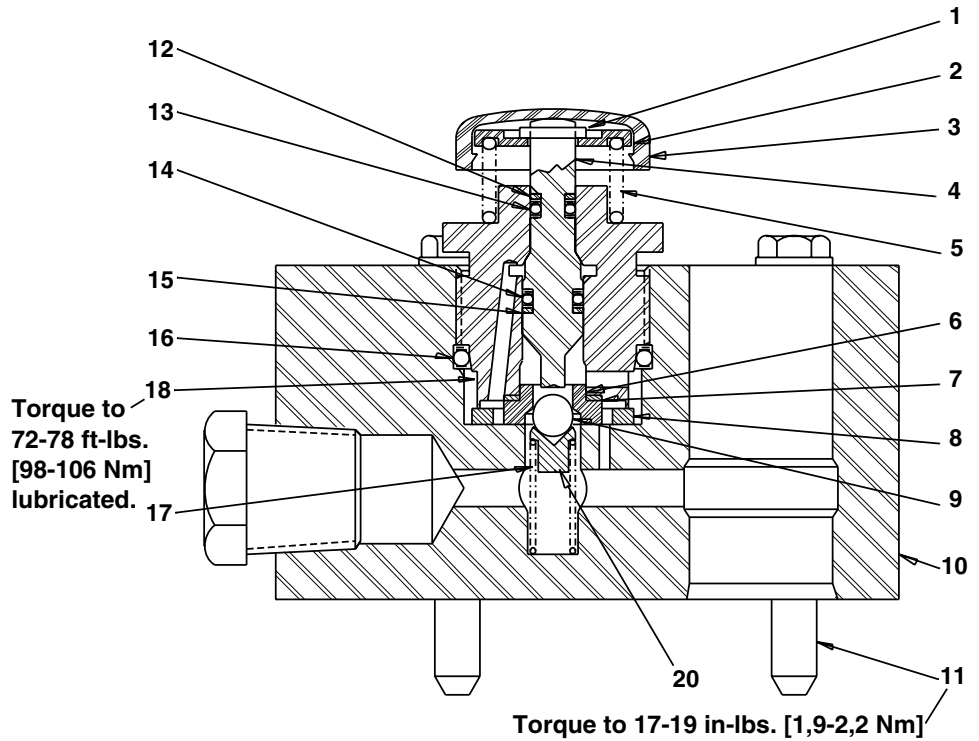
★ Items included in and available only as part of Repair Kit. See Table 2 on back cover for Repair Kit ordering information.

PAT/7002, 7005 Models

NOTE: If the release valve has the letter "S" stamped on the top surface of the valve above the outlet port, the pump was manufactured with a shim washer between the valve body (10) and the ball seat (6). If the pump has this shim, reassemble with shim in place. If the shim is damaged, contact Enerpac Technical Services for a replacement valve assembly.

NOTE: Early production models did not use ball guide (20). When servicing an early production release valve assembly, the ball guide included in the Repair Kit (DA4836900K1) should be installed.

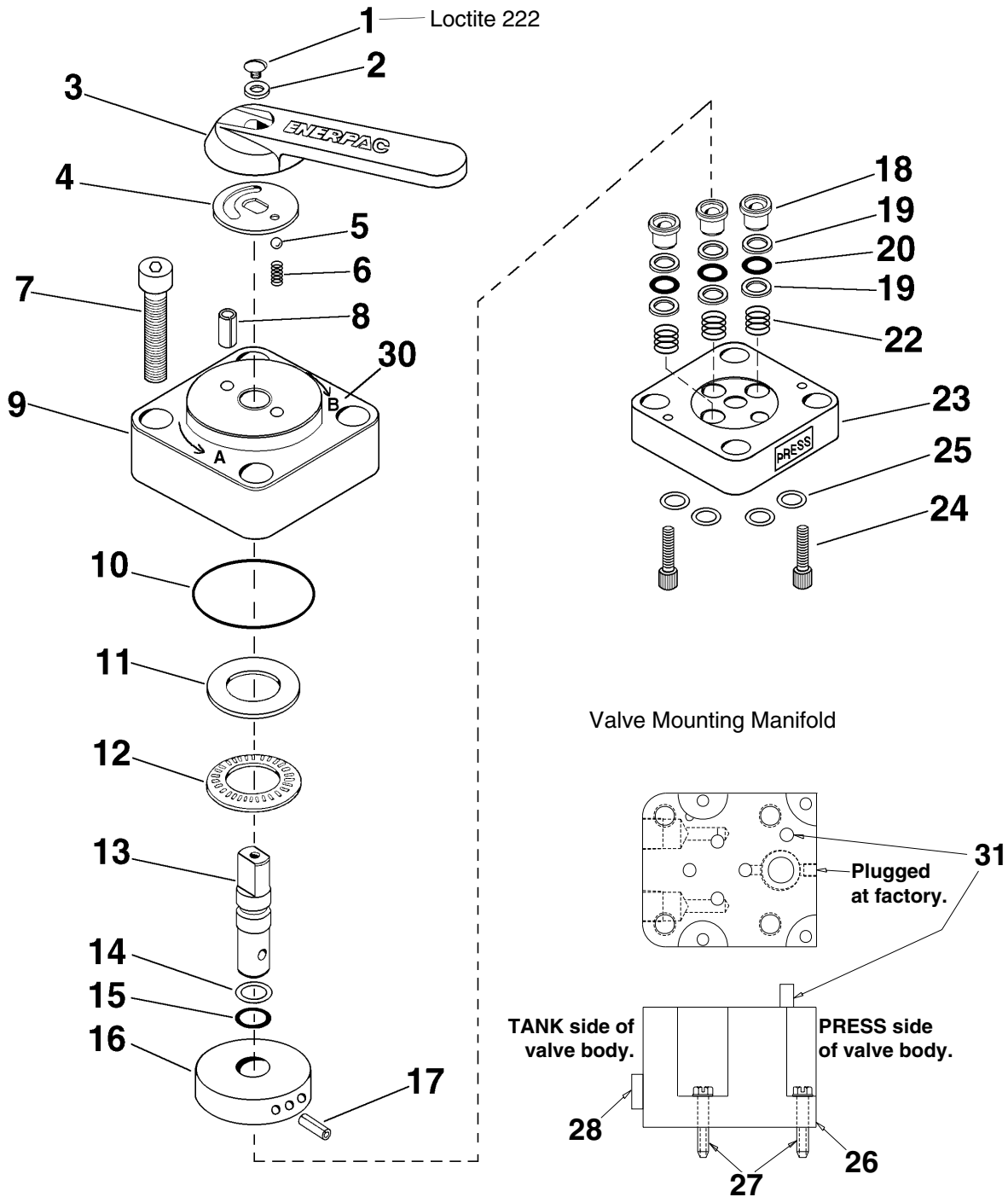
Figure 9 - Release Valve



REPAIR PARTS LIST FOR FIGURE 9							
Item	Part Number	Qty.	Description	Item	Part Number	Qty.	Description
1	★ DA5025349	1	Retaining Ring	11	DA4294028	4	Thread Forming Screw
2	DA4848108	1	Spring Washer	12	★ B1006564	1	Back-Up Washer
3	★ DA4831020	1	Cap	13	★ B1001503	1	O-Ring
4	DA4832040	1	Release Plunger	14	★ B1003503	1	O-Ring
5	★ DA6971110	1	Spring	15	★ B1008564	1	Back-Up Washer
6	★ CB581290	1	Ball Seat	16	★ B1118903	1	O-Ring
7	★ P20037	1	Gasket	17	★ CJ656110	1	Spring
8	★ CL344167	1	Gasket	18	DA4872013SR	1	Release Guide Ass'y.
9	★ B1006016	1	Ball	20	★ DA7572013	1	Ball Guide
10	DA4836900SR	1	Complete Valve Ass'y. NPT Ports				
	DA9742900SR	1	Complete Valve Ass'y. BSPP Ports				

★ Items included in and available only as part of Release Valve Repair Kit DA4836900K1. One Release Valve Repair Kit is included in the Pump Repair Kit PAT1053K1.

Figure 10 - Manual Valves (PAM Models)



NOTES:

1. Apply Loctite PST59241 or Vibraseal on threads of Item 28 NPT plugs only.
2. Torque Item 27 to 22-26 in-lbs.

IMPORTANT

Do not attempt to repair the pump by substituting another valve. The 4-way manual valve used on Turbo pumps is *NOT* interchangeable with a standard Enerpac VM-4 valve. Using a valve that is not designed for this mounting configuration may result in the reservoir becoming pressurized during operation.

For complete replacement valve, order:

DA5118900SR for NPT Ports

DA9744900SR for BSPP Ports.

Figure 10 - Manual Valves

Item No.	Part Number	Quantity	Description	Item No.	Part Number	Quantity	Description
1	★ A8076048	1	Screw	16	CH542950SR	1	Disc Assembly
2	★ B1086108	1	Washer	17	★ B1109057	1	Roll Pin
3	Y325070	1	Handle	18	★ DA9560041	3	Shear Seal
4	A8005071	1	Disc	19	★ B1011564	6	Back-Up Washer
5	★ B1006016	1	7/32" Ball	20	★ B1006503	3	O-Ring
6	★ A8039110	1	Spring	22	★ CB28110	3	Spring
7	B1389028	4	Bolt	23	CH539190	1	Body
8	★ B1126057	1	Roll Pin	24	B1326028	2	Bolt
9	CB324001	1	Valve Cap	25	★ B1111803	4	O-Ring
10	★ B1269503	1	O-Ring	26	DA5132840SR	1	Manifold - NPT Ports
11	CB327101	1	Bearing Plate		DA9745840SR	1	Manifold - BSPP Ports
12	CB328281	1	Bearing	27	CU874028	4	Screw
13	CH536104	1	Shaft	28	CS235006	2	Plug - BSPP Ports
14	★ B1012564	1	Back-Up Washer		R515245-2	2	Plug - NPT Ports
15	★ B1007503	1	O-Ring	30	DA5579026	1	Decal
				31	B1051057	1	Pin

★ Items included in and available only as part of Repair Kit DA5118900K.
NOTE: One Manual Valve Repair Kit is included in Pump Repair Kit PAM1053K1.

Table 1 - Relief Valve Settings

Pump Model	Pressure Rating	Relief Valve Pressure Setting
PA_1_ _ _ _	10,000 psi	10,400 to 11,000 psi
7002	10,000 psi	10,400 to 11,000 psi
7005	10,000 psi	10,400 to 11,000 psi

For standard models with special pressure settings, the model number will have a "dash" followed by 4 more digits to indicate the pressure setting.

To determine the pressure setting, locate the model number stamp. The model number will be in the format PAYYYYYY - XXXX, where XXXX is the maximum pressure rating. The relief valve should be set from (XXXX + 250 psi) to (XXXX + 750 psi).

Table 2 - Repair Kit Application

Pump Model	Repair Kit
All PAN and PAQ Models	PAC1053K1
2 liter PAM Models	PAM1053K1
5 liter PAM Models	PAM1105K
2 liter PAT Models	PAT1053K1
5 liter PAT Models	PAT1105K

Reservoir size is indicated by the 7th position in the model number code: PAYYYYYY.

Australia
ENERPAC, Applied Power Australia Ltd.
Block V Unit 3,
Regents Park Estate,
391 Park Road
Regents Park NSW 2143
(P.O. Box 261) Australia
Tel: +61 297 438 988
Fax: +61 297 438 648

Brazil
Power Packer do
Brasil LTDA
Avenida Ferraz
Alvim nº 1012
(09961-550) - Diadema
São Paulo, Brazil
Tel: +55 11 4051 1188
Fax: +55 11 4051 3699

China
Shanghai Blackhawk
Machinery Co Ltd
15H Jinxuan Building
238 Nandan Road (E)
Shanghai, 200030, China
Tel: +86 21 6469 8732
Fax: +86 21 6469 8721

France, Greece, Turkey, Middle East,
Africa
ENERPAC S.A.
B.P. 200, Parc d'Activités
du Moulin de Massy
F-91882 Massy CEDEX (Paris) France
Tel: +33 01 601 368 68
Fax: +33 01 692 037 50

Germany, Denmark, Scandinavia,
Austria, Switzerland, Eastern
Europe, CIS
ENERPAC
Applied Power GmbH
P.O. Box 300113
D-40401 Düsseldorf, Germany
Tel: +49 211 471 490
Fax: +49 211 471 49 28/40

Holland, Belgium, Luxembourg,
ENERPAC B.V.
Storkstraat 25
P.O. Box 269
3900 AG Veenendaal, Holland
Tel: +31 318 535 911
Fax: +31 318 535 848
+31 318 526 645

Hong Kong
ENERPAC
Room 907 Workingberg
Commercial Building
41-47 Marble Road,
North Point
Tel: +852-2561 6295
Fax: +852-2561 6772

India
ENERPAC
Hydraulic (India) Pvt Ltd
Plot No. A-571
MIDC, TTC Industrial Area
Mahape-400 701,
Navi Mumbai, India
Tel: +91 22 769 47 78
Fax: +91 22 769 84 73

Italy
ENERPAC Applied Power Italiana S.p.A.
Via Canova 4,
20094 Corsico (Milano)
Tel: +39 2 486 111 00
Fax: +39 2 486 012 88

Japan
Applied Power Japan Ltd.
10-17 Sasame Kita-Machi
Toda-Shi, Saitama #335, Japan
Tel: +81 048 421 2311
Fax: +81 048 421 8949

Malaysia
Applied Power Hytec (M) Sdn Bhd 22-1,
Jalan SS 15/8B
Subang Jaya, 47500
P.J. Selangor
West Malaysia
Tel: (0203) 73729 23/39/19
Fax: (0203) 737 29 18

Mexico
ENERPAC Applied Power Mexico S.A. de
C.V.
Avenida Principal,
La Paz #100
Fracc. Industrial La Paz
42084 Pachuca, Hidalgo
Tel: +52 771 337 00
Fax: +52 771 838 00

Singapore
Applied Power Asia Pte Ltd
47 Jalan Pemimpin,
#01-02 & 01-03
Sin Cheong Bldg
Singapore 577200
Thomson Road,
P.O. Box 114
Singapore 915704
Tel: +65 258 16 77
Fax: +65 258 28 47

South Korea
ENERPAC
Applied Power Korea Ltd.
163-12 Dodang-Dong, Choong-Ku,
Buchun-shi, Kyunggi-Do
Republic of Korea
Tel: +82 32 675 08 36
Fax: +82 32 675 30 02

Spain, Portugal
ENERPAC Applied Power International S.A.
A. Valgrande 14
Nave 12
28108 Alcobendas (Madrid), Spain
Tel: +34 91 661 11 25
Fax: +34 91 661 47 89

United Kingdom, Ireland
ENERPAC Limited
Unit 3 Colemeadow Road
North Moons Moat, Redditch
Worcester B98 9PB
United Kingdom
Tel: +44 01527 598 900
Fax: +44 01527 585 500

USA, Canada, Latin America and
Caribbean
ENERPAC
6101 N. Baker Road
Milwaukee, WI 53209 USA
Tel: +1 414 781 66 00
Fax: +1 414 781 10 49

USA
User inquiries:
+1 800 433 2766
Distributor inquiries/orders:
+1 800 558 0530

Canada
User inquiries:
+1 800 426 4129
Distributor inquiries/orders:
+1 800 426 2284

Internet
www.enerpac.com

e-mail
info@enerpac.com

All Enerpac products are guaranteed against defects in workmanship and materials for as long as you own them. Under this guarantee, free repair or replacement will be made to your satisfaction.

For your nearest authorized Enerpac Service Center, visit us at www.enerpac.com