

To Protect Your Warranty, Use Only ENERPAC Hydraulic Oil.

Enerpac recommends that all kit components be installed to insure optimum performance of the repaired unit.

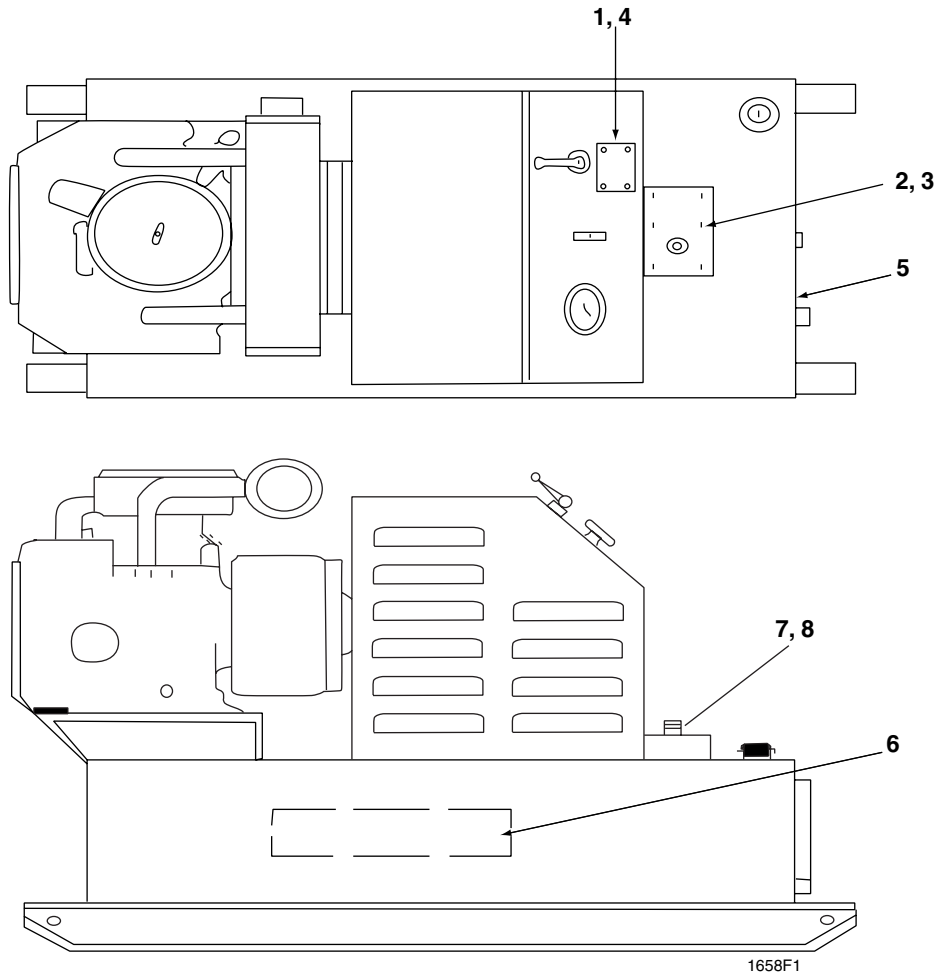


Figure 1

Repair Parts List for Figure 1

Item	Part Number	Qty.	Description	Item	Part Number	Qty.	Description
1	Y697003	4	Rivet	6	CL537026	2	Decal
2	B1349028	3	Capscrew (VM-2 uses 6)	7	VM-2	1	2 Position, 3-way Valve
3	B1357028	2	Capscrew (VM-4)	7	VM-4	1	3 Position, 4-way Valve
4	★★	1	Nameplate	8	F786.167	1	Valve Gasket
5	CJ357026	1	Caution Decal				

★ Contact Enerpac for replacement nameplate.

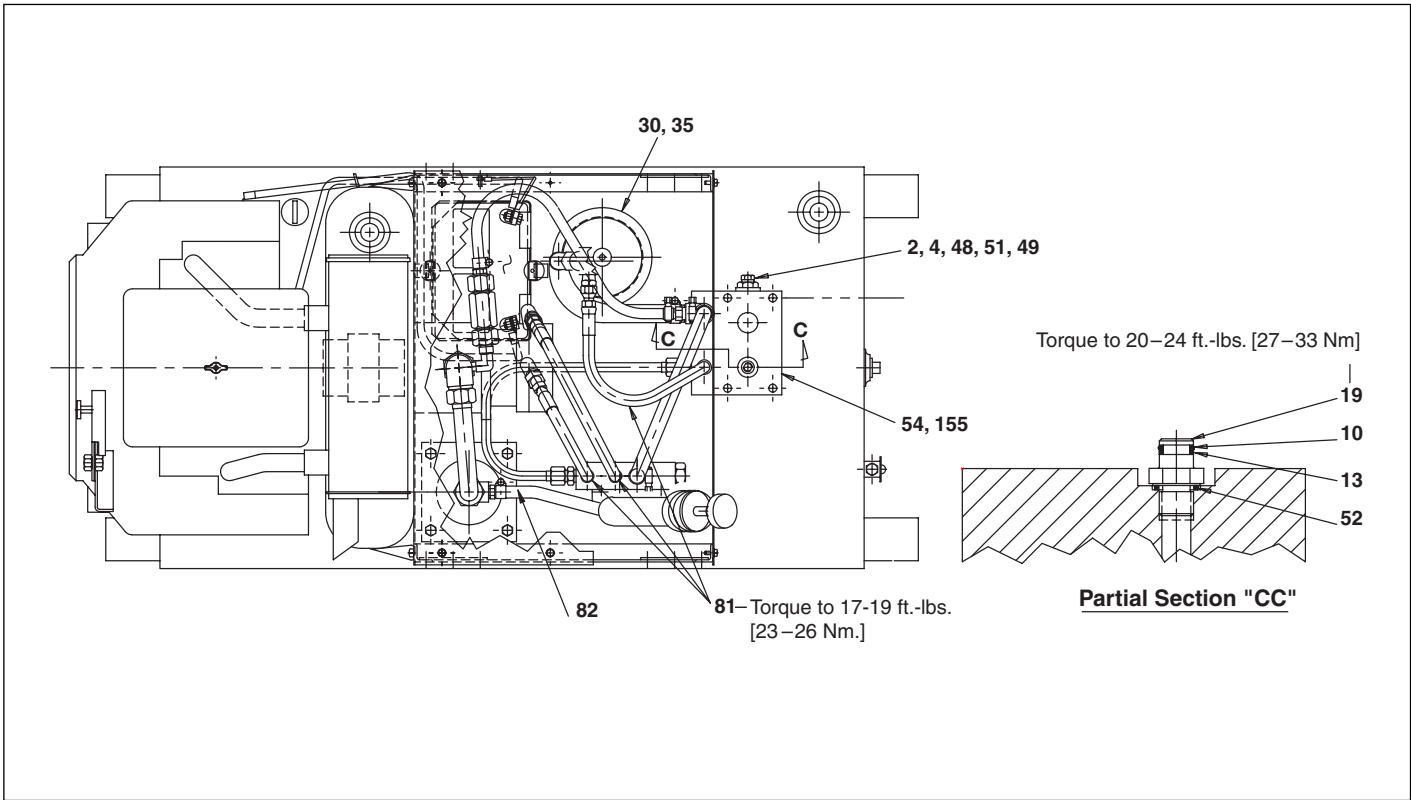


Figure 2, Top View

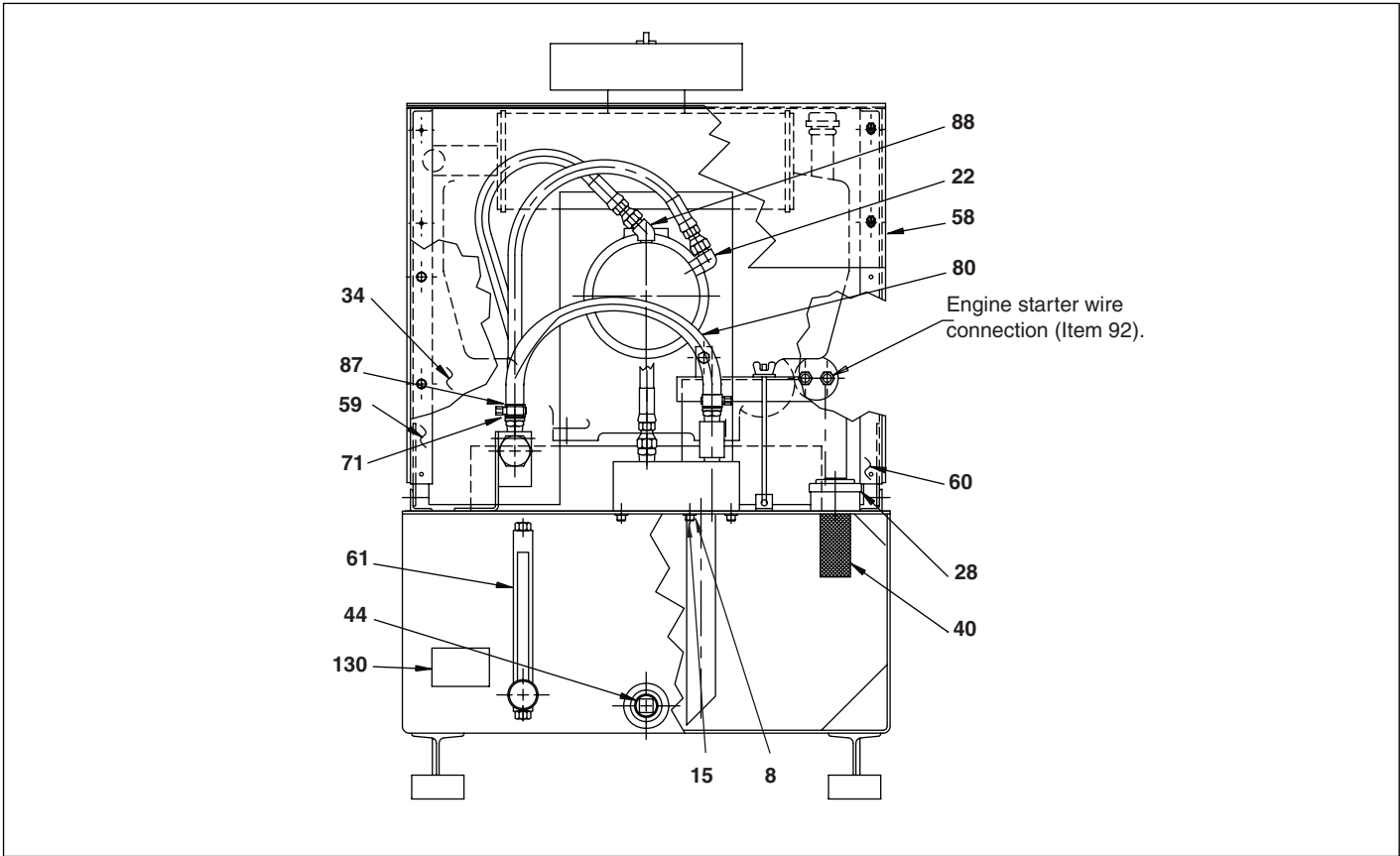


Figure 3, Front View

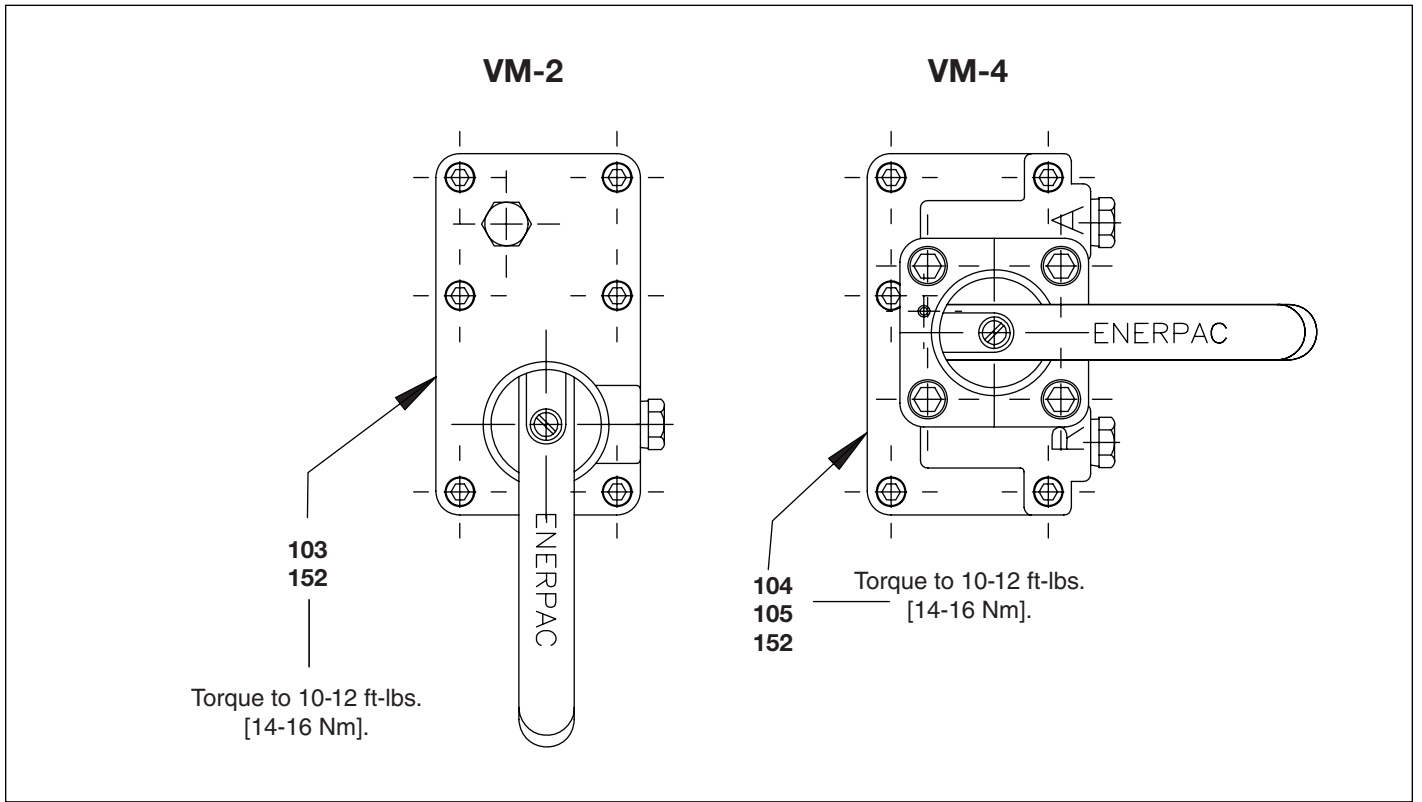


Figure 4, Manual Valve

Repair Parts List for Figure 2, 3 and 4							
Item	Part Number	Qty.	Description	Item	Part Number	Qty.	Description
2	P181190W	1	Relief Assembly	58	DA12318134	2	Side Panel
4	B159167	1	Gasket	59	Y791001	1	Frame Left
8	B1002066	6	Lock Washer	60	Y792001	1	Frame Right
10	B1007503	1	O-Ring	61	Y818023	1	Gauge
13	B1012564	1	Back-up	71	C724034	4	Coupling
15	B1035046	6	Screw	80	CU285646	2	Hose
19	C649270	1	Connector	81	DA5936646	3	Hose Assembly
22	CA200096	1	Male Elbow	82	CU283268	1	Tube Assembly
28	F278020	1	Cap	87	CB40299	4	Hose Clamp
30	F285098	1	Hole Cover	88	CU234096	1	45° Male Elbow
34	F646134	1	Front Panel	103	B1351028	6	Socket Head Capscrews (.312-18 x 1.25)
35	F657167	1	Cover Gasket	104	B1351028	3	Socket Head Capscrews (.312-18 x 1.25)
40	F799018	1	Oil Filter Screen	105	B1359028	2	Socket Head Capscrews (.312-18 x 2.25)
44	L788006	1	Pipe Plug	130	CJ375026	1	Caution Decal
48	P18247	1	Gasket	152	CH272026	1	Caution Decal
49	P182272-1	1	Cover Plug	155	F786167	1	Gasket
51	R515245-2	1	Plug				
52	S15167	1	Gasket				
54	Y763950	1	Base Assembly				

Figure 5, Side View

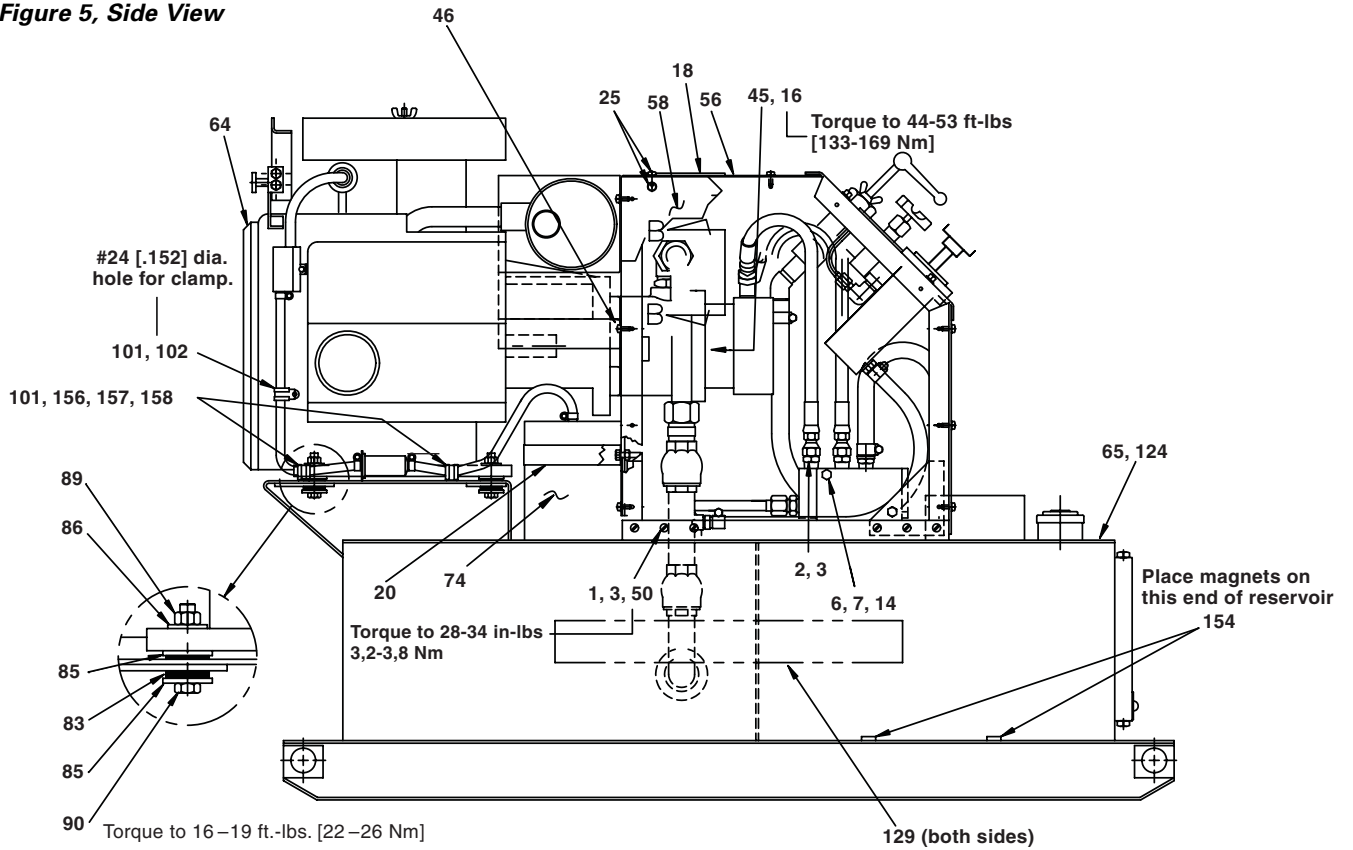
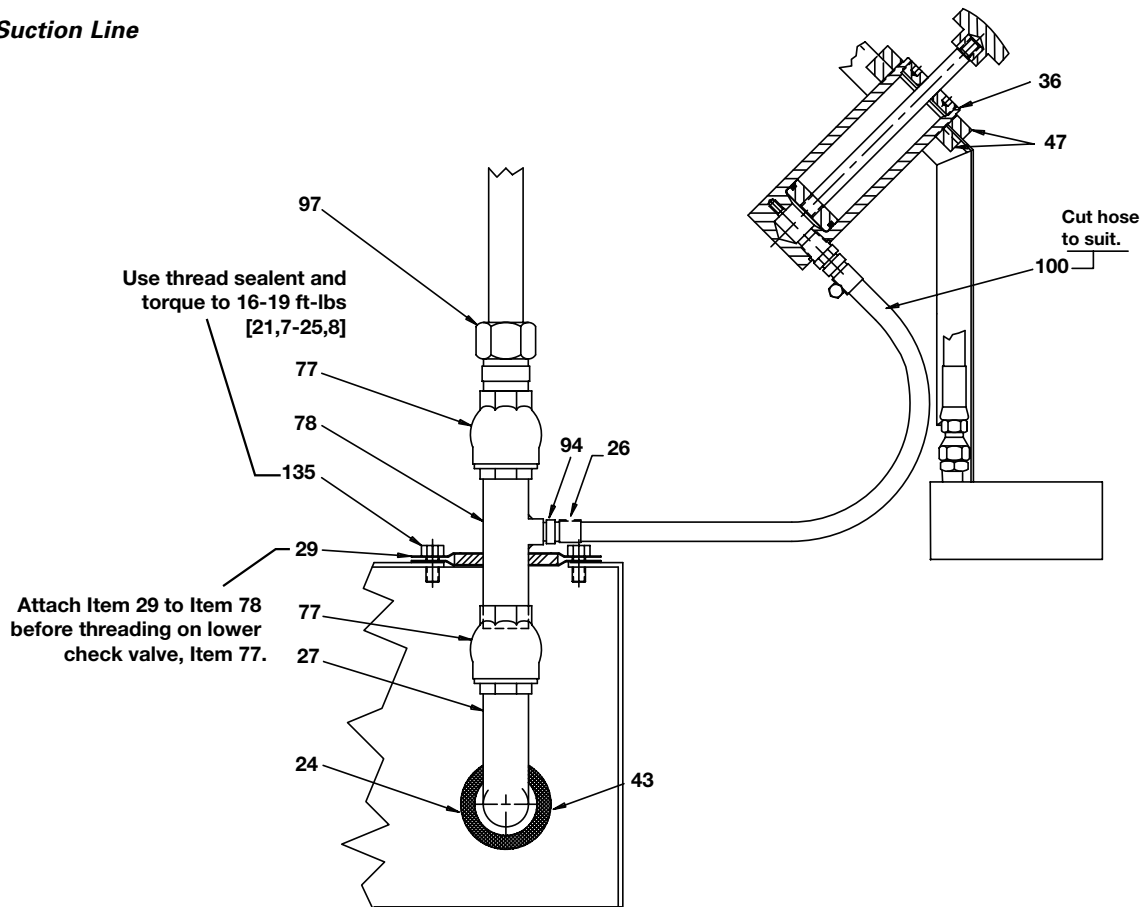


Figure 6, Suction Line



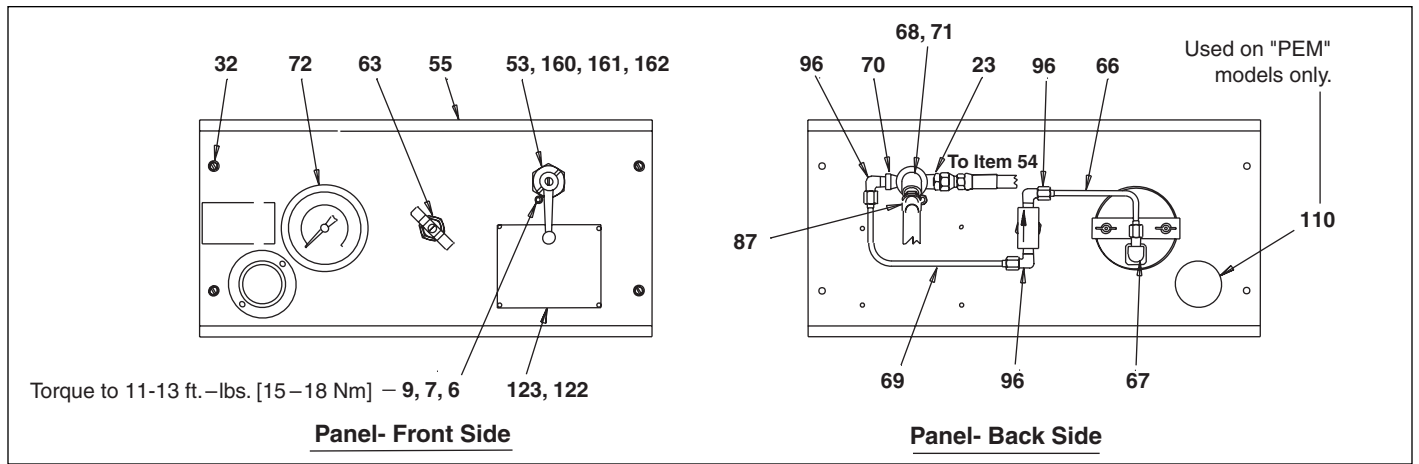


Figure 7, Control Panel

Repair Parts List for Figure 5, 6 and 7

Item	Part Number	Qty.	Description	Item	Part Number	Qty.	Description
1	B1018121	12	Hex Nut	71	C724034	4	Coupling
3	B1080066X	12	Washer	72	CR792023	1	Gauge 4"
6	B1001066	2	.25 Lock Washer	74	CU486025	1	Gas Tank
7	B1001120	2	Nut	76	CU486025	1	Gas Tank
14	B1017046	2	Screw	77	CU546101	2	Check Valve
16	B1139028	2	.50-13 x 1.25	78	DA5103900	1	Pipe
18	F735885	1	Seal Kit	83	CU290885	4	Isolation Mount
20	CA6017	1	Strap	85	CU289108	8	Tail Washer
23	CA945096	4	Connector	86	B1028108	4	Washer
24	CF767900	1	Connector Assembly	87	CB40299	4	Hose Clamp
25	CB558028	38	Screw	89	B1005120	4	Hex Nut
26	CB949299	4	Clamp	90	B1087046	4	Cap Screw
27	DA5104900	1	Pipe	94	CU652225	4	Barbed Insert
29	DA4958004	1	Suction Kit	96	C332291	3	Fitting
32	F423028	4	Screw	97	L767096	1	M Connector
36	DA5107900	1	Priming Pump Assy	100	DA5189646	2	Hose
43	L747018	1	Filter	101	DA5434299	3	Clamp
45	L680900	1	Pump Assembly	102	CB5580028	1	Screw
46	M393034	1	Coupler	110	DA5354009	1	Snap-In Seal
47	DA4956021	2	Nut	122	Y697003	4	Rivet
50	P182252	12	Screw	123	CN615026	1	Nameplate Electric Pumps
53	V152	1	Valve Assembly	129	CL537026	2	Decal
55	Y786134	1	Instruction Panel	135	F279004	1	Suction Kit
56	Y787134	1	Rear Panel	154	C187018	6	Magnet
58	DA12318134	2	Side Panel	156	B1323028	2	Socket Head Srew
64	DC6027259	1	Gasoline Engine	157	B101721	2	Hex Nut
63	Y908950	1	Gauge Sheet Valve	158	B106466	2	Lock Washer
64	DC60272259	1	Gasoline Engine	160	P45138	1	Screw
65	CU372900	1	Reservoir Assembly	161	P45139	1	Washer
66	CU279268	1	Tube Assembly	162	P6012	1	Lever
67	CH304096	1	Elbow	157	B1017121	1	Hex Nut
68	CU235096	1	45° Street Elbow	158	B1064066	2	Lock Washer
70	CJ657032	1	Reducer Bushing				

◆ Note 1: Starter Settings, 230 Volt-34, 460 Volt-22, 575 Volts-12. For all other voltage please call customer service.

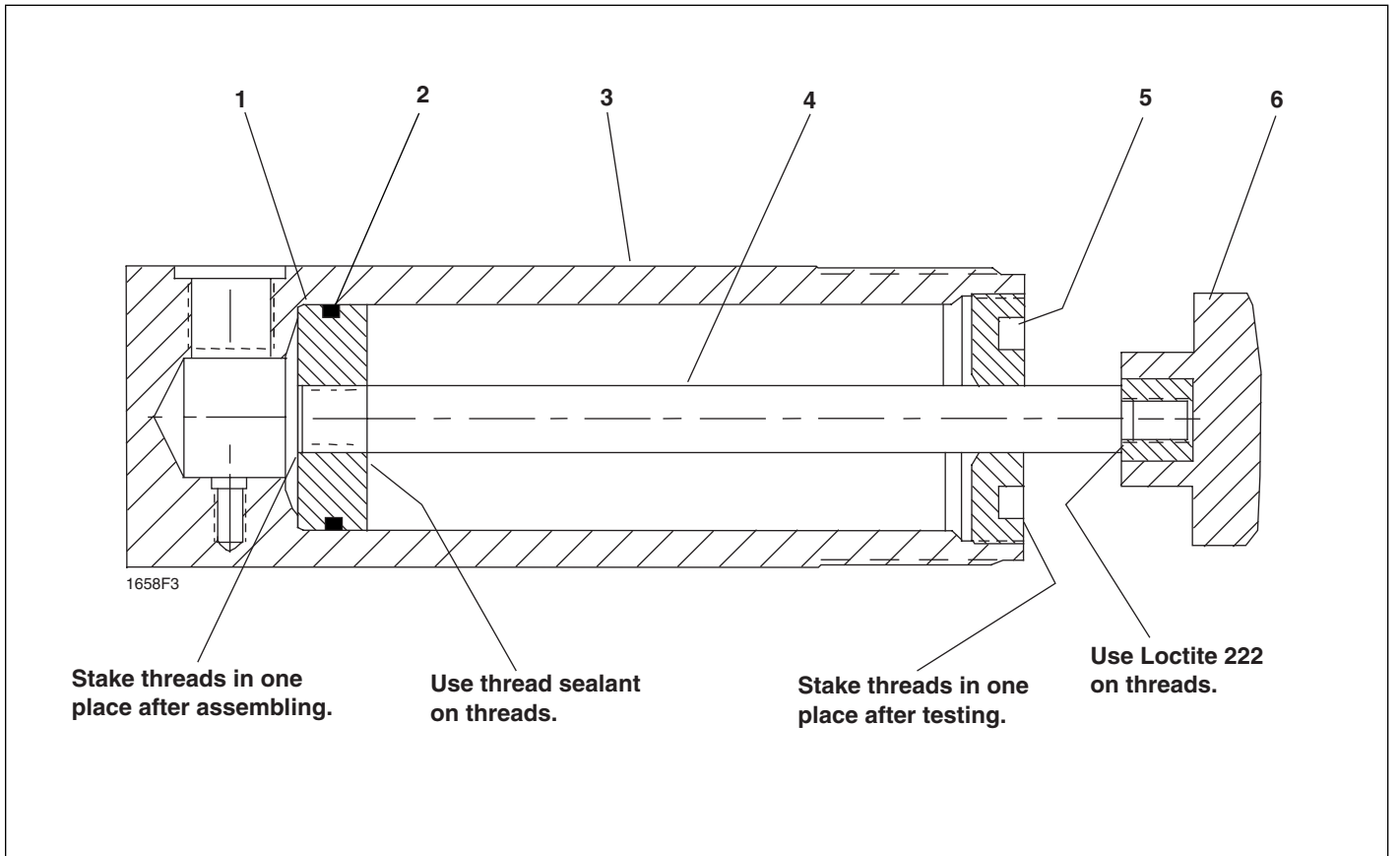
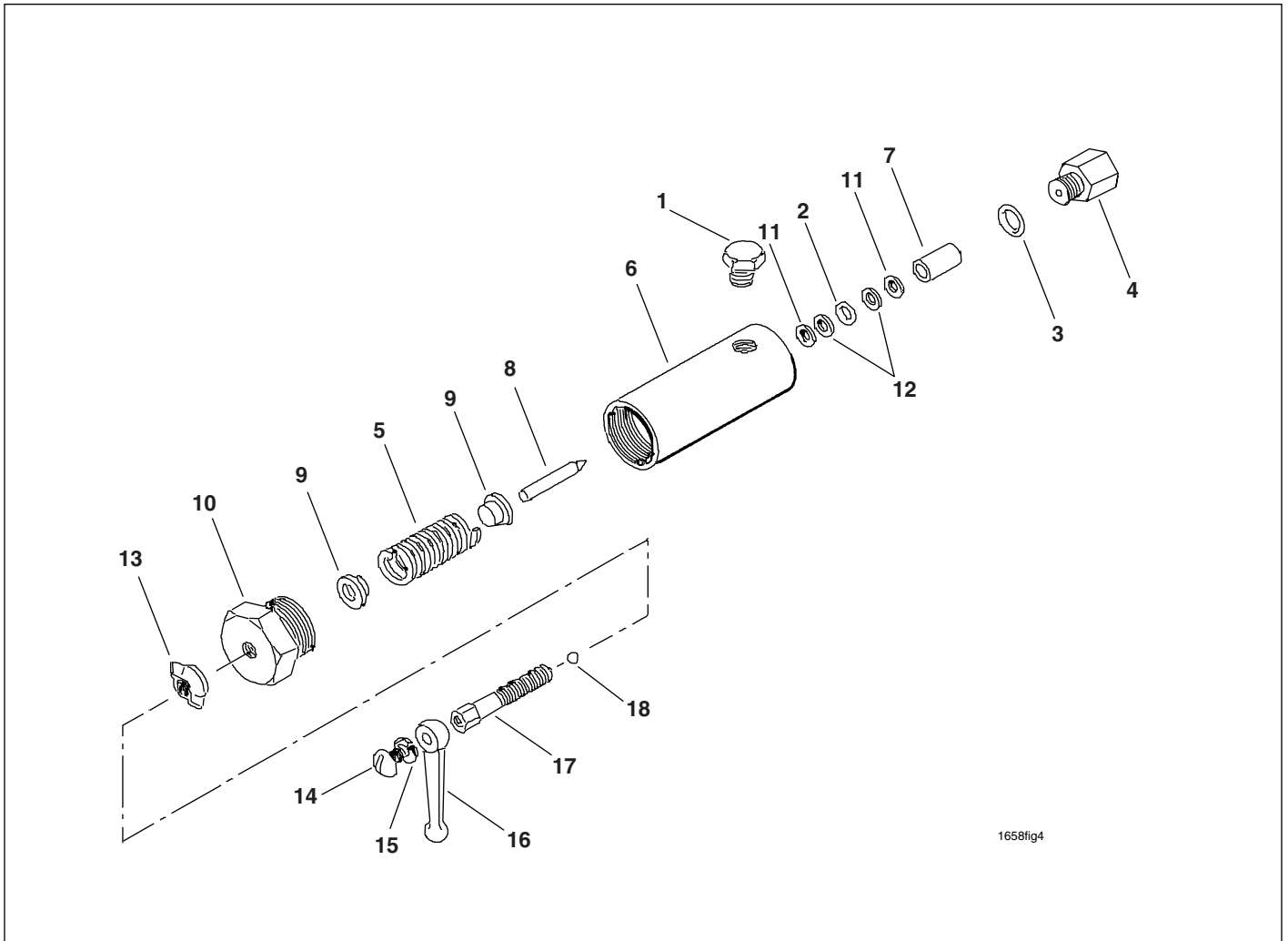


Figure 8, Priming Pump Assembly

Repair Parts List for Figure 8			
Item	Part Number	Qty.	Description
1	DA4959.051	1	Piston
2	B1026.503	1	O-Ring
3	CB424.030	1	Base
4	DA4954.107	1	Rod
5	DA4955.044	1	Stop Ring
6	DA4953.147	1	Knob



1658fig4

Figure 9, V152

Repair Parts List for Figure 9

Item	Part Number	Qty.	Description	Item	Part Number	Qty.	Description
1	R515245-2	1	Pipe Plug	10	CB955006	1	Plug
2	★B1006503	1	O-Ring	11	★CB956186	2	Spacer
3	★B1220503	1	O-Ring	12	★CB957564	2	Back-Up Ring
4	DA2949290	1	Seat	13	F85021	1	Wing Nut
5	CB470110	1	Spring	14	P45138	1	Screw
6	CB951190	1	Valve Body	15	P45139	1	Lockwasher
7	CB952013	1	Piston Guide	16	P6012	1	Lever
8	CB953051	1	Piston	17	Y200010	1	Spindle
9	CB954013	2	Spring Guide	18	★B1005016	1	Ball

★ Indicates Items Included in, and Available Only as Part of Repair Kit V152K.

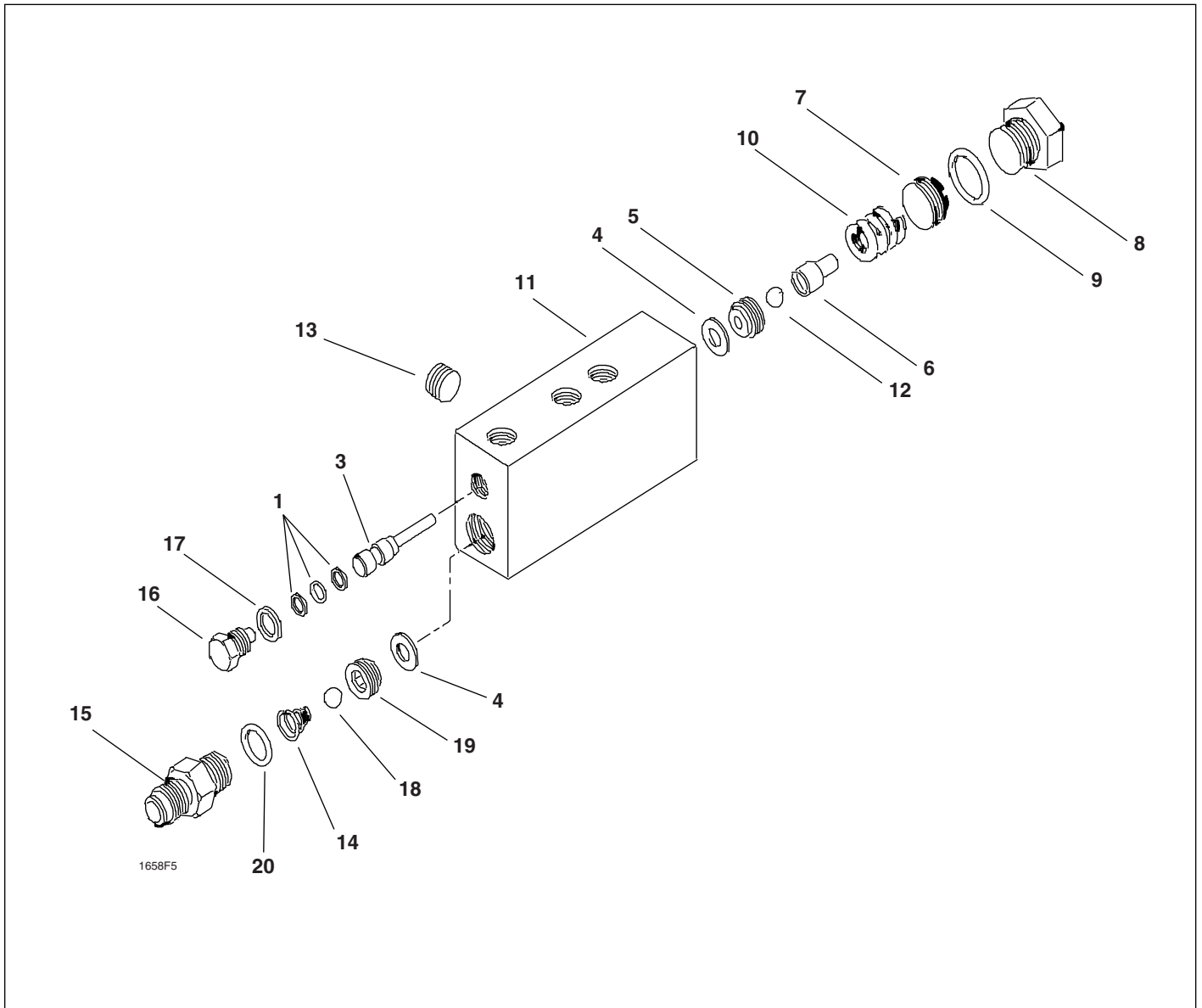


Figure 10, CU31690 By-pass Valve

Repair Parts List for Figure 10							
Item	Part Number	Qty.	Description	Item	Part Number	Qty.	Description
1	DA3418367	2	Back-Up Ring	11	CF677190	1	Valve Body
2	B1005503	1	Seal	12	B1011016	1	3/8" Ball
3	CL580040	1	Plunger	13	A1009245	1	Plug
4	Y932167	2	Gasket	14	Y926110	1	Spring
5	CU309290	1	Seat	15	CU287096	1	Fitting
6	CU310160	1	Plug	16	CL399900	1	Valve Plug Assembly
7	DA3825027	1	Adjusting Screw	17	B159167	1	Gasket
8	CF797096	1	Plug	18	B1013016	1	7/16" Ball
9	Y219167	1	Gasket	19	Y924290	1	Seat
10	CU315110	1	Spring	20	B1908503	1	O-Ring

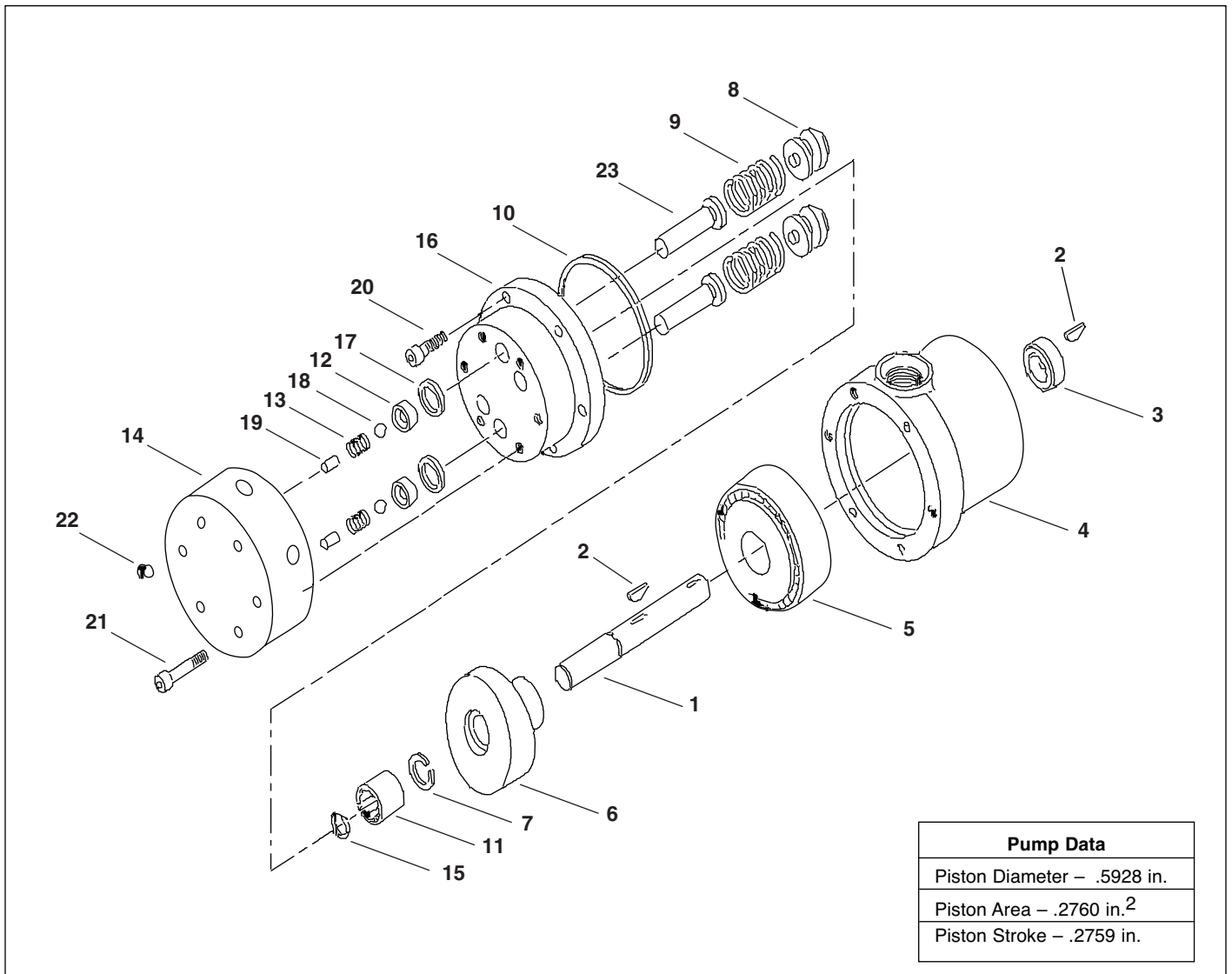


Figure 11, L930900 Pump Assembly

Repair Parts List for Figure 11							
Item	Part Number	Qty.	Description	Item	Part Number	Qty.	Description
1	B9002288	1	Shaft	13	★ A1033110	4	Outlet Spring
2	A9001408	2	Key	14	L926098	1	Pump Cover
3	L675001	1	Pump Housing	15	A9001562	1	Thrust Washer
4	A9002155	1	Tapered Bearing	16	C9003050	1	Barrel
5	L677101	1	Wobble Plate	17	B1211803	4	O-ring
6	★ A9001049	1	Retaining Ring	18	★ B1011016	4	O-ring
7	★ A9001476	1	Oil Seal	19	A9000061	4	Ball Stop
8	P237418	6	Retainer Spring	20	B1069028	6	Capscrew
9	P237170-2	6	Piston Return Spring	21	B1073028	6	Capscrew
10	★ B1109503	1	O-ring	22	A1007245	1	Pipe Plug
11	A9003155	1	Needle Bearing	23	A9001900	6	Piston Assembly
12	A9000290	4	Seat				

★ Items included in and available only as part of Repair Kit L903K.

Enerpac Worldwide Locations

Africa

ENERPAC Middle East FZE
Office 423, JAFZA 15
P.O. Box 18004
Jebel Ali, Dubai
United Arab Emirates
Tel: +971 (0)4 8872686
Fax: +971 (0)4 8872687

Australia, New Zealand

Actuant Australia Ltd.
Block V Unit 3
Regents Park Estate
391 Park Road
Regents Park NSW 2143
(P.O. Box 261) Australia
Tel: +61 297 438 988
Fax: +61 297 438 648

Brazil

Power Packer do Brasil Ltda.
Rua dos Inocentes, 587
04764-050 - Sao Paulo (SP)
Tel: +55 11 5687 2211
Fax: +55 11 5686 5583
Toll Free in Brazil:
Tel: 0800 891 5770
vendasbrasil@enerpac.com

Canada

Actuant Canada Corporation
6615 Ordan Drive, Unit 14-15
Mississauga, Ontario L5T 1X2
Tel: +1 905 564 5749
Fax: +1 905 564 0305
Toll Free:
Tel: +1 800 268 4987
Fax: +1 800 461 2456
Technical Inquiries:
techservices@enerpac.com

China

Actuant China Ltd.
1F, 269 Fute N. Road
Waigaoqiao Free Trade Zone
Pudong New District
Shanghai, 200 131 China
Tel: +86 21 5866 9099
Fax: +86 21 5866 7156

◆ e-mail: info@enerpac.com

Actuant China Ltd. (Beijing)

709B Diyang Building
Xin No. 2
Dong San Huan North Rd.
Beijing City
100028 China
Tel: +86 10 845 36166
Fax: +86 10 845 36220

Central and Eastern Europe, Greece

ENERPAC GmbH
P.O. Box 300113
D-40401 Düsseldorf
Willstätterstrasse13
D-40549 Düsseldorf
Germany
Tel: +49 211 471 490
Fax: +49 211 471 49 28

France, Switzerland francophone

ACTUANT - ENERPAC
France S.A., ZA de Courtaboeuf
32, avenue de la Baltique
91140 Villebon / Yvette
France
Tel: +33 1 60 13 68 68
Fax: +33 1 69 20 37 50

Germany, Austria

and Switzerland
ENERPAC GmbH
P.O. Box 300113
D-40401 Düsseldorf
Willstätterstrasse13
D-40549 Düsseldorf
Germany
Tel: +49 211 471 490
Fax: +49 211 471 49 28

India

ENERPAC Hydraulics
(India) Pvt. Ltd.
Office No. 9, 10 & 11,
Plot No. 56, Monarch Plaza,
Sector 11, C.B.D. Belapur
Navi Mumbai 400614, India
Tel: +91 22 2756 6090
Tel: +91 22 2756 6091
Fax: +91 22 2756 6095

Italy

ENERPAC S.p.A.
Via Canova 4
20094 Corsico (Milano)
Tel: +39 02 4861 111
Fax: +39 02 4860 1288

Japan

Applied Power Japan Ltd.
Besshochou 85-7
Saitama-shi, Kita-ku,
Saitama 331-0821
Japan
Tel: +81 48 662 4911
Fax: +81 48 662 4955

Middle East, Turkey and Caspian Sea

ENERPAC Middle East FZE
Office 423, JAFZA 15
P.O. Box 18004
Jebel Ali, Dubai
United Arab Emirates
Tel: +971 (0)4 8872686
Fax: +971 (0)4 8872687

Russia and CIS

(excl. Caspian Sea Countries)
Actuant LLC
Admiral Makarov Street 8
125212 Moscow, Russia
Tel: +7-495-9809091
Fax: +7-495-9809092

Singapore

Actuant Asia Pte. Ltd.
37C, Benoi Road Pioneer Lot,
Singapore 627796
Tel: +65 68 63 0611
Fax: +65 64 84 5669
Toll Free: +1800 363 7722
Technical Inquiries:
techsupport@enerpac.com.sg

◆ internet: www.enerpac.com

South Korea

Actuant Korea Ltd.
3Ba 717,
Shihwa Industrial Complex
Jungwang-Dong, Shihung-Shi, Kyunggi-Do
Republic of Korea 429-450
Tel: +82 31 434 4506
Fax: +82 31 434 4507

Spain and Portugal

ENERPAC
C/San José Artesano 8
Pol. Ind.
28108 Alcobendas
(Madrid) Spain
Tel: +34 91 661 11 25
Fax: +34 91 661 47 89

The Netherlands, Belgium, Luxembourg, Sweden, Denmark, Norway, Finland and Baltic States

ENERPAC B.V.
Galvanistraat 115, 6716 AE Ede
P.O. Box 8097, 6710 AB Ede
The Netherlands
Tel: +31 318 535 911
Fax: +31 318 525 613
+31 318 535 848

Technical Inquiries Europe:
techsupport.europe@enerpac.com

United Kingdom, Ireland

Enerpac Ltd
Bentley Road South
Darlaston, West Midlands
WS10 8LQ, United Kingdom
Tel: +44 (0)121 50 50 787
Fax: +44 (0)121 50 50 799

USA, Latin America and Caribbean

ENERPAC
P.O. Box 3241
6100 N. Baker Road
Milwaukee, WI 53209 USA
Tel: +1 262 781 6600
Fax: +1 262 783 9562

User inquiries:
+1 800 433 2766

Inquiries/orders:
+1 800 558 0530

Technical Inquiries:
techservices@enerpac.com

All Enerpac products are guaranteed against defects in workmanship and materials for as long as you own them.
For your nearest authorized Enerpac Service Center, visit us at www.enerpac.com